

CONTINUED FROM PRECEDING PAGE

AIRPORT MANAGER: 401-691-2000

WEATHER DATA SOURCES: ASOS 118.6. USAF AN/FMQ-19.

COMMUNICATIONS: CTAF 126.350 ATIS 118.6 (Tue-Fri 1300-0400Z†, Sat 1400-2200Z†, Sun 1500-2300Z†, clsd Mon and hols) UNICOM 122.950

RCO 255.4 (BRIDGEPORT RADIO)

Ⓡ PROVIDENCE APP/DEP CON 123.675 244.875 (Sun-Fri 1030-0530Z†, Sat 1030-0500Z†) other times ctc

BOSTON CENTER APP/DEP CON 124.85 307.9

TOWER 126.35 (Tue-Fri 1300-0400Z†, Sat 1400-2200Z†, Sun 1500-2300Z†, clsd Mon and hols)

CLNC DEL 134.5

CLEARANCE DELIVERY PHONE: For CD when Apch clsd ctc Boston ARTCC at 603-879-6859.

AIRSPACE: CLASS D svc 1300-0400Z† Tue-Fri, 1400-2200Z† Sat, 1500-2300Z† Sun, clsd Mon and hol; other times CLASS G.

RADIO AIDS TO NAVIGATION: NOTAM FILE PVD.

PROVIDENCE (H) (H) VORW/DME 115.6 PVD Chan 103 N41°43.46' W71°25.78' 188° 7.7 NM to fld. 49/14W.

VOR portion unusable:

085°-105° byd 12 NM blo 5,500'

085°-105° byd 8 NM blo 3,000'

106°-294° byd 30 blo 3,000'

295°-330° byd 30 blo 6,000'

331°-084° byd 30 blo 3,000'

DME portion unusable:

085°-105° byd 12 NM blo 5,500'

085°-105° byd 8 NM blo 3,000'

106°-152° byd 11 NM blo 2,000'

106°-152° byd 20 NM blo 4,000'

153°-294° byd 30 NM blo 3,000'

295°-330° byd 30 blo 6,000'

331°-084° byd 30 blo 3,000'

ILS/DME 109.5 I-OQU Chan 32 Rwy 16. Class IT. Preventive maint sched 1400-1600Z† Thur. Unmonitored when ATCT clsd.

PAWTUCKET

NORTH CENTRAL STATE (SFZ)(KSFZ) 3 E UTC-5(-4DT) N41°55.25' W71°29.49'

NEW YORK

441 B LRA NOTAM FILE SFZ

H-101, 11D, 12K, L-33C, 34J

RWY 05-23: H5000X100 (ASPH) S-30, D-60 HIRL

RWY 05: MALS. PAPI(P4R)—GA 3.0° TCH 52'. Trees.

RWY 23: REIL. PAPI(P4L)—GA 3.0° TCH 35'. Trees.

RWY 15-33: H3211X75 (ASPH) S-12.5 MIRL 0.5% up SE

RWY 15: REIL. PAPI(P4L)—GA 3.5° TCH 35'. Trees.

RWY 33: REIL. Trees.

SERVICE: S4 FUEL 100LL, JET A, A+ LGT ACTVT MALS Rwy 05;

REIL Rwy 15, 23 and 33; PAPI Rwy 05, 15 and 23; HIRL Rwy

05-23; MIRL Rwy 15-33; twy lgts —CTAF.

NOISE: Noise abatement procedures in effect, contact airport manager.

AIRPORT REMARKS: Attended 1200-2200Z† Sun-Sat. Parachute Jumping.

Birds and wildlife on and invof arpt. Ap wildlife haz deer act increased

hn. Seasonal skydiving northeast side of afld. Seasonal glldr ops invof

arpt SR-SS. Rwy conds may not be mnt or rprtd when ap is

unattended. Ctc RI ap corporation ops 401-691-2265. Lgtd 250 ft

MSL tower 3.4 miles SE. +50' drop-off 250' from Rwy 05 end,

+40' drop-off 250' from Rwy 23 end. Nmrs unlgtd obstns up to 150

ft AGL srndg airfield. Overnight parking fee. Ldg fee for commercial

acft and non-Rhode Island registered acft.

AIRPORT MANAGER: 401-691-2000

WEATHER DATA SOURCES: AWOS-3PT 120.775 (401) 334-0324.

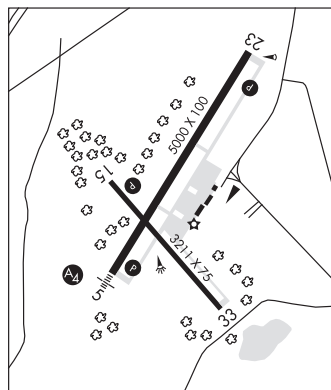
COMMUNICATIONS: CTAF/UNICOM 123.075

Ⓡ PROVIDENCE APP/DEP CON 123.675 (Sun-Fri 1030-0530Z† Sat 1030-0500Z† other times ctc)

Ⓡ BOSTON CENTER APP/DEP CON 124.85

CLNC DEL 124.35

CLEARANCE DELIVERY PHONE: For CD when Apch clsd ctc Boston ARTCC at 603-879-6859.



CONTINUED ON NEXT PAGE

CONTINUED FROM PRECEDING PAGE

RADIO AIDS TO NAVIGATION: NOTAM FILE PVD.

PROVIDENCE (H) (H) VORW/DME 115.6 PVD Chan 103 N41°43.46' W71°25.78' 001° 12.1 NM to fld. 49/14W.

VOR portion unusable:

085°–105° byd 12 NM blo 5,500'
 085°–105° byd 8 NM blo 3,000'
 106°–294° byd 30 blo 3,000'
 295°–330° byd 30 blo 6,000'
 331°–084° byd 30 blo 3,000'

DME portion unusable:

085°–105° byd 12 NM blo 5,500'
 085°–105° byd 8 NM blo 3,000'
 106°–152° byd 11 NM blo 2,000'
 106°–152° byd 20 NM blo 4,000'
 153°–294° byd 30 NM blo 3,000'
 295°–330° byd 30 blo 6,000'
 331°–084° byd 30 blo 3,000'

PUTNAM (H) (H) VORW/DME 117.4 PUT Chan 121 N41°57.33' W71°50.65' 111° 15.9 NM to fld.
 652/14W. NOTAM FILE BDR.

DME unusable:

265°–301° byd 36 NM blo 3,000'

LOC/DME 111.9 I-SFZ Chan 56 Rwy 05. LOC unmonitored.

PROVIDENCE

RHODE ISLAND TF GREEN INTL (PVD)(KPVD) 6 S UTC-5(-4DT) N41°43.34'

NEW YORK

H-101, 11D, 12K, L-33C, 34J

IAP, AD

W71°25.66'

54 B LRA Class I, ARFF Index C NOTAM FILE PVD

RWY 05-23: H8700X150 (ASPH-GRVD) S-120, D-250, 2S-175,
 2D-550, 2D/2D2-1120 PCN 75 F/A/W/T HIRL CL

RWY 05: ALSF2. TDZL. REIL. PAPI(P4R)—GA 3.0° TCH 69'.

RVR-TMR

RWY 23: MALSR. VASI(V4L)—GA 3.0° TCH 41'. RVR-TMR Trees.

RWY 16-34: H6081X150 (ASPH-GRVD) S-120, D-250, 2S-175,
 2D-423, 2D/2D2-1093 PCN 75 F/A/W/T HIRL 0.3% up N

RWY 16: REIL. PAPI(P4L)—GA 3.0° TCH 49'. RVR-R Thld dsplcd
 565'. Trees.

RWY 34: MALSR. PAPI(P4L)—GA 3.0° TCH 60'. RVR-T Trees.

RUNWAY DECLARED DISTANCE INFORMATION

RWY 05: TORA-8700 TODA-8700 ASDA-8700 LDA-8700

RWY 16: TORA-6081 TODA-6081 ASDA-6081 LDA-5516

RWY 23: TORA-8700 TODA-8700 ASDA-8700 LDA-8700

RWY 34: TORA-6081 TODA-6081 ASDA-6081 LDA-6081

ARRESTING GEAR/SYSTEM

RWY 05: EMAS

RWY 16: EMAS

RWY 34: EMAS

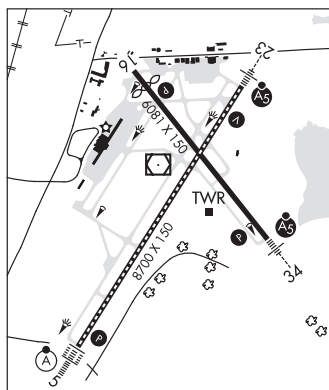
SERVICE: S4 FUEL 100LL, JET A LGT When ATCT clsd, ALSF-2 bcms SSALS preset med intst only. When ATCT clsd, ACTVT MALSR Rwy 23 and 34; REIL Rwy 16; PAPI Rwy 05, 16 and 34; VASI Rwy 23; TDZ Rwy 05; cntn Rwy 05-23; HIRL Rwy 05-23 and 16-34—CTAF.

NOISE: Noise abatement procedures in effect, ctc noise mgr 401-691-2419. Helicopters avoid residential areas when blw 1000'.

AIRPORT REMARKS: Attended continuously. Deer and birds on and invof arpt. 110' unmarked lgt poles 2700' from thld Rwy 34; 900' left of cntnln. ASDE-X in use. Operate transponders with altitude reporting mode and ADS-B (if equipped) enabled on all airport surfaces. Terminal ramp prohibited for use to general aviation. Parked acft on the northeast ramp west of Twy A, be alert. Freq flt school, tran jet acft, and vertical activity. Northwest ramp acft with wingspan greater than 110' req gnd crew assistance for thru taxi and parking. Northeast ramp acft with wingspan greater than 150' req ground crew assistance for thru taxi and parking. Run up pad for Twy F clsd to acft with wingspan over 118'. Twy V clsd daily 0100-1300Z±, btn Rwy 16-34 and Twy C. Gnd vehicles monitor CTAF when twr clsd. Ldg fee. Flight Notification Service (ADCUS) available.

AIRPORT MANAGER: 401-691-2000

WEATHER DATA SOURCES: ASOS 124.2 (401) 734-2818. LLWAS.



CONTINUED ON NEXT PAGE