

CONTINUED FROM PRECEDING PAGE

AIRSPACE: CLASS D svc 1600–0800Z† Mon–Thu, 1600–0100Z† Fri, clsd Sat, Sun and hol; other times CLASS G.

RADIO AIDS TO NAVIGATION: NOTAM FILE CRQ.

OCEANSIDE (VH) (H) VORTAC 115.3 OCN Chan 100 N33°14.44' W117°25.06' 026° 4.8 NM to fld. 52/15E.

VOR unusable:

028°–036° byd 40 NM
 039°–048° byd 40 NM
 049°–059° byd 40 NM blo 13,000'
 049°–059° byd 58 NM
 060°–099° byd 40 NM
 100°–114° byd 40 NM blo 7,000'
 100°–114° byd 61 NM
 216°–226° byd 40 NM
 227°–265° byd 20 NM
 305°–320° byd 40 NM
 330°–335° byd 40 NM
 337°–017° byd 40 NM

(T) TACAN Chan 55 NFG (111.8) N33°16.48' W117°23.18' 031° 2.2 NM to fld. 502/13E. NOTAM FILE NFG. TACAN unmonitored when arpt clsd.

No NOTAM MP 2100–0100Z† Fri

ASR/PAR (Mon–Thu 1600–0800Z†, Fri 1600–0100Z†, clsd Sat, Sun and hol)

COMM/NAV/WEATHER REMARKS: Radar See Terminal FLIP for Radar Minima.

CARLSBAD

MC CLELLAN–PALOMAR (CRQ)(KCRQ) 3 SE UTC–8(–7DT) N33°07.70' W117°16.81'

LOS ANGELES

331 B TPA—See Remarks Class I, ARFF Index A NOTAM FILE CRQ MON Airport

L–4H

RWY 06–24: H4897X150 (ASPH–GRVD) S–60, D–80, 2S–102, 2D–110

IAP, AD

PCN 33 F/D/X/T HIRL

RWY 06: PAPI(P4L)—GA 3.0° TCH 35'. RVR–R Thld dspcd 297'.

RWY 24: MALSR. REIL. PAPI(P4L)—GA 3.2° TCH 54'. RVR–T Rgt tfc.

RUNWAY DECLARED DISTANCE INFORMATION

RWY 06: TORA–4897 TODA–4897 ASDA–4897 LDA–4600

RWY 24: TORA–4897 TODA–4897 ASDA–4897 LDA–4897

SERVICE: S4 FUEL 100LL, JET A OX3, 4 LGT When twr clsd ACTIVATE HIRL Rwy 06–24, PAPI Rwy 06 and Rwy 24, REIL Rwy 24, MALSR Rwy 24—CTAF.

NOISE: No jet acft training due to noise abatement and traffic congestion. Multiple apchs by large acft (including large helicopters) not authorized. All acft multiple practice apch and ldgs discourage 0600–1500Z†. Voluntary curfew, jets 0600–1500Z†, props 0800–1400Z†, emerg, lifeguard and law enforcement excepted. Arpt has noise abatement procedures ctc arpt manager 760–431–4646.

AIRPORT REMARKS: Attended 1500–0600Z†. Rwy 24 hard to see 2 hrs prior to SS; do not mistake Twy A as the rwy. Extensive bird activity in vicinity especially in spring. P–lines 2 miles W & SW. Rwy 24 is calm wind rwy. CLOSED to air carrier ops with more than 9 passenger seats from 0630Z† to 1400Z† except by PPR call arpt manager 760–431–4646. PPR for all military acft call arpt manager 760–431–4646. TPA—1003(672) helicopters, 1503(1172) small acft, 2003(1672) large acft. Rwy 06–24 south VFR tfc pattern clsd 0600–1500Z†. Request jets fly the ILS apch. North side ramp limited to 12,500 lbs. TSNT PRKG LTD to SML SNGL and twin ENG ACFT with wingspans under 38 FT. No jet ACFT PRKG allowed in TSNT PRKG. Limited transient tie down space on public ramp. U.S. Customs User Fee Arpt, ctc 877–848–7766. Ldg fee. Use caution reg thermal plumes invof power plant approximately 2.7 NM West and Northwest of arpt.

AIRPORT MANAGER: 760-431-4646

WEATHER DATA SOURCES: ASOS (760) 930–0864 LAWRS.

COMMUNICATIONS: CTAF 118.6 ATIS 120.15 (760–438–2117)

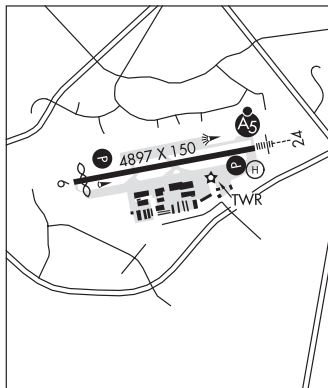
OCEANSIDE RCO 122.1R 115.3T (SAN DIEGO RADIO)

Ⓜ **SOCAL APP/DEP CON** 127.3

TOWER 118.6 (1500–0600Z†) **GND CON** 121.8

CLNC DEL 134.85

CLEARANCE DELIVERY PHONE: For CD when ATCT clsd ctc SoCal Apch at 800-448-3724.



CONTINUED ON NEXT PAGE

CONTINUED FROM PRECEDING PAGE

AIRSPACE: CLASS D svc 1500-0600Z; other times CLASS G.

RADIO AIDS TO NAVIGATION: NOTAM FILE CRQ.

OCEANSIDE (VH) (H) VORTAC 115.3 OCN Chan 100 N33°14.44' W117°25.06' 119° 9.7 NM to fld. 52/15E.

VOR unusable:

- 028°-036° byd 40 NM
- 039°-048° byd 40 NM
- 049°-059° byd 40 NM blo 13,000'
- 049°-059° byd 58 NM
- 060°-099° byd 40 NM
- 100°-114° byd 40 NM blo 7,000'
- 100°-114° byd 61 NM
- 216°-226° byd 40 NM
- 227°-265° byd 20 NM
- 305°-320° byd 40 NM
- 330°-335° byd 40 NM
- 337°-017° byd 40 NM

ILS/DME 108.7 I-CRQ Chan 24 Rwy 24. Unmonitored when ATCT clsd. Autopilot coupled approaches NA below 960' MSL.

COMM/NAV/WEATHER REMARKS: When twr clsd acft must self-announce on CTAF prior to ldg or tkof.

HELIPAD H1: H40X50 (CONC) HIRL

HELIPORT REMARKS: Standard heliport markings.

CASTLE (See ATWATER on page 100)

CATALINA (See AVALON on page 101)

CEDARVILLE (O59) 2 N UTC-8(-7DT) N41°33.22' W120°09.94'

4623 B NOTAM FILE RNO

RWY 02-20: H4415X50 (ASPH) S-12.5 MIRL 1.2% up S

RWY 02: Thld displcd 120'. Road.

SERVICE: LGT ACTIVATE MIRL Rwy 02-20-CTAF.

AIRPORT REMARKS: Unattended.

AIRPORT MANAGER: 530-233-6412

COMMUNICATIONS: CTAF/UNICOM 122.8

CLEARANCE DELIVERY PHONE: For CD ctc Seattle ARTCC at 253-351-3694.

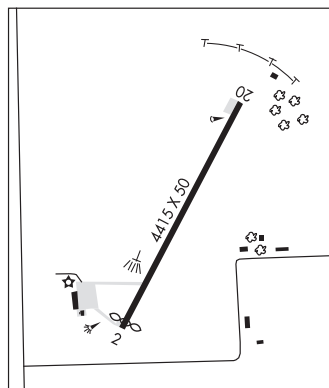
RADIO AIDS TO NAVIGATION: NOTAM FILE LKV.

LAKEVIEW (H) (H) VORTACW 112.0 LKV Chan 57 N42°29.57'

W120°30.43' 146° 58.4 NM to fld. 7465/19E.

KLAMATH FALLS

L-11A



CHARLES M SCHULZ – SONOMA CO (See SANTA ROSA on page 246)