

VOR/DME BPT 114.5 Chan 92	APP CRS 119°	Rwy Idg TDZE Apt Elev	3669 31 32
--	------------------------	-----------------------------	---------------------------------------

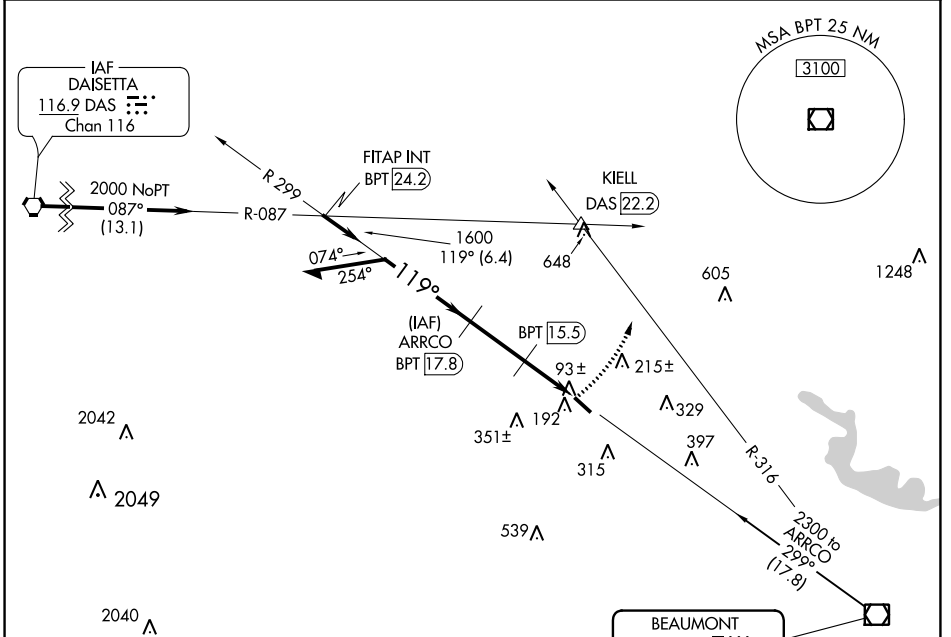
VOR/DME RWY 13

BEAUMONT MUNI (BMT)

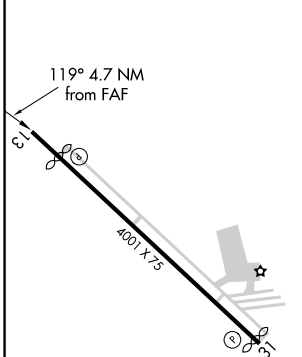
▽ Use Beaumont-Port Arthur, TX (Jack Brooks Rgnl) altimeter setting.
△ NA Circling NA Rwy 16-34. Circling Rwy 31 NA at night. Rwy 13 helicopter visibility reduction below 3/4 SM NA.

MISSED APPROACH: Climbing left turn to 2300 via BPT R-316 to KIELL INT/DAS 22.2 DME.

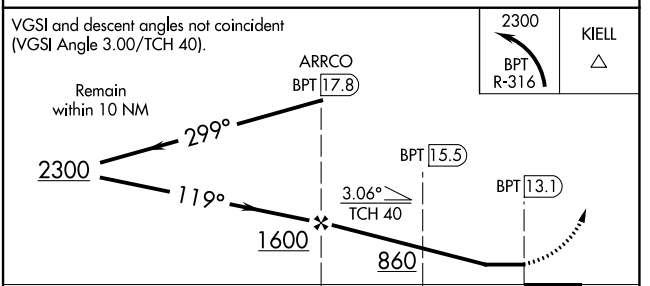
AWOS-3PT 118.425	HOUSTON APP CON 121.3 377.1	CLNC DEL 121.75	UNICOM 123.0 (CTAF) ①
----------------------------	---------------------------------------	---------------------------	--



ELEV 32	TDZE 31
---------	---------



REIL Rwy 13	MIRL Rwy 13-31 ①
-------------	-------------------------



CATEGORY	A	B	C	D
S-13	580-1	549 (600-1)	580-1½ 549 (600-1½)	580-1¾ 549 (600-1¾)
① CIRCLING	580-1 548 (600-1)	620-1 588 (600-1)	720-2 688 (700-2)	720-2¼ 688 (700-2¼)

SC-5, 18 MAY 2023 to 15 JUN 2023

SC-5, 18 MAY 2023 to 15 JUN 2023