

VOR/DME BPT 114.5 Chan 92	APP CRS 299°	Rwy Idg 3934 TDZE 32 Apt Elev 32
--	------------------------	---

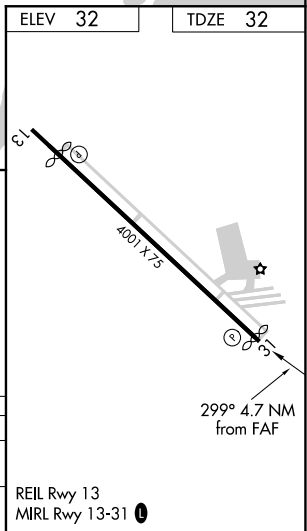
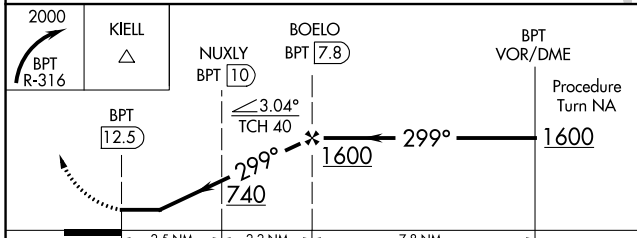
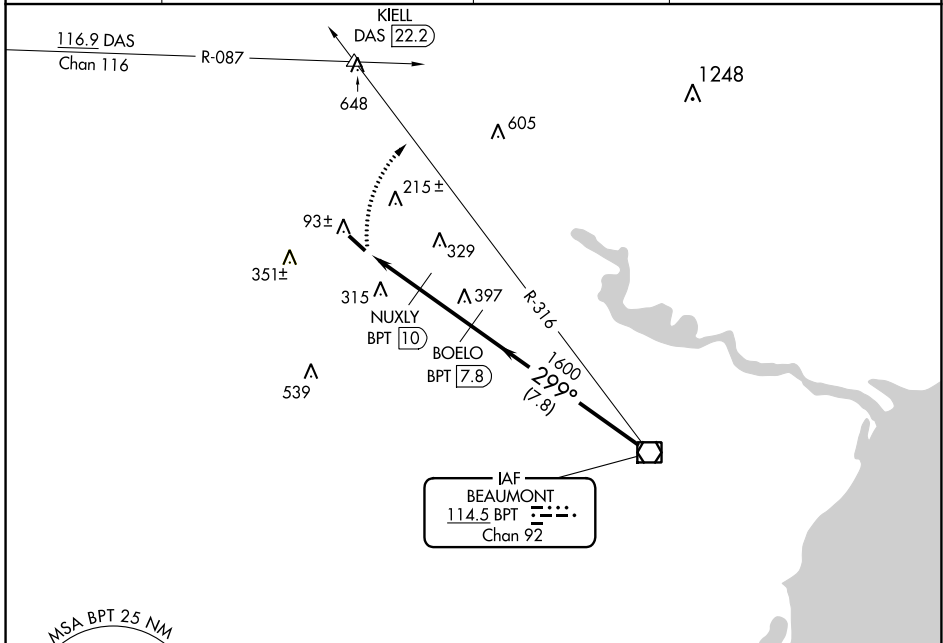
VOR/DME RWY 31

BEAUMONT MUNI (BMT)

▼ Use Beaumont-Port Arthur, TX (Jack Brooks Rgnl) altimeter setting.
▲ NA Circling NA Rwy 16-34. Straight in Rwy 31 NA at night, Circling Rwy 31 NA at night. Rwy 31 helicopter visibility reduction below 1 SM NA.

MISSED APPROACH: Climbing right turn to 2000 via BPT R-316 to KIELL INT/DAS 22.2 DME.

AWOS-3PT 118.425	HOUSTON APP CON 121.3 377.1	CLNC DEL 121.75	UNICOM 123.0 (CTAF) 0
----------------------------	---------------------------------------	---------------------------	--



CATEGORY	A	B	C	D
S-31	600-1 568 (600-1)	620-1 588 (600-1)	600-1½ 568 (600-1½)	600-1¾ 568 (600-1¾)
☐ CIRCLING	600-1 568 (600-1)	620-1 588 (600-1)	720-2 688 (700-2)	720-2¼ 688 (700-2¼)

SC-5, 18 MAY 2023 to 15 JUN 2023

SC-5, 18 MAY 2023 to 15 JUN 2023