

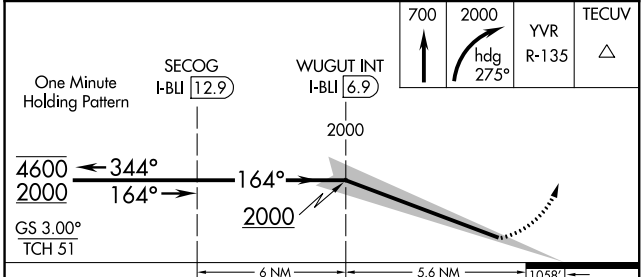
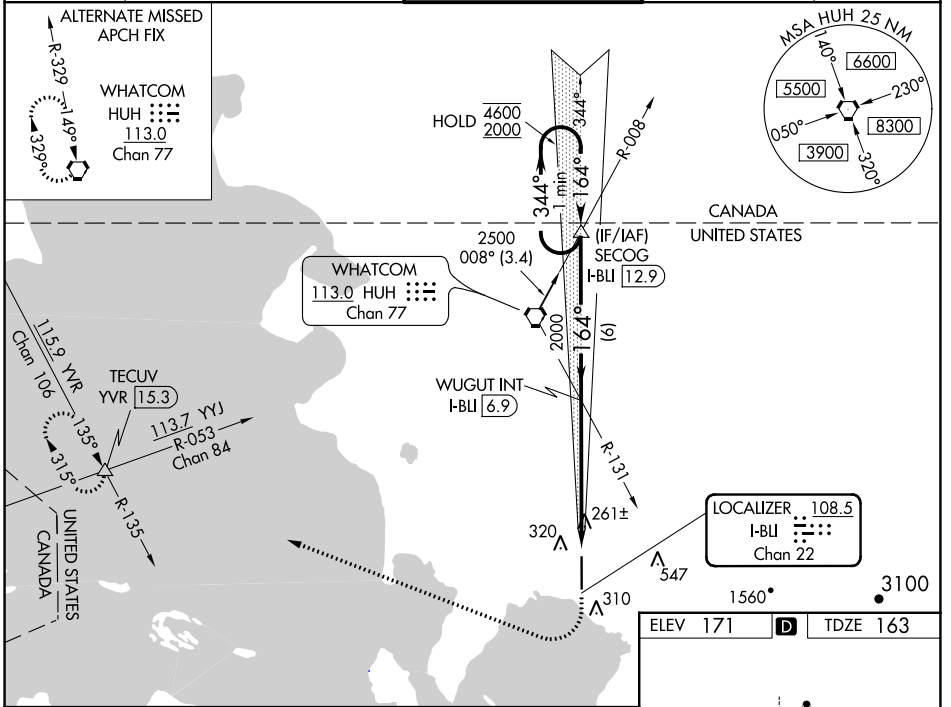
LOC/DME I-BLI 108.5 Chan 22	APP CRS 164°	Rwy Idg TDZE Apt Elev	6700 163 171
--	------------------------	-----------------------------	---

ILS RWY 16 (SA CAT I)

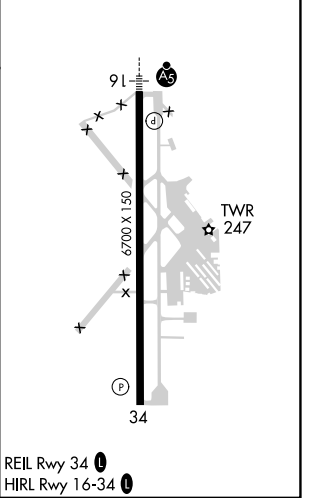
BELLINGHAM INTL (BLI)

DME or RADAR required.		MALSR	MISSED APPROACH: Climb to 700 then climbing right turn to 2000 on heading 275° and on YVR VOR/DME R-135 to TECUV INT/YVR 15.3 DME and hold.
Requires specific OPSPEC, MSPEC or LOA approval and use of HUD to DH.			

ATIS 134.45	VICTORIA TERMINAL APP CON 132.7 290.8	BELLINGHAM TOWER ★ 124.9 (CTAF) 379.3	GND CON 127.4 379.3	UNICOM 122.95
-----------------------	---	---	-------------------------------	-------------------------



ELEV 171	D	TDZE 163
----------	----------	----------



CATEGORY	A	B	C	D
S-ILS 16	RA 244/14 150 DA 313			

SA CATEGORY I ILS-SPECIAL AIRCREW & AIRCRAFT CERTIFICATION REQUIRED

NW-1, 18 MAY 2023 to 15 JUN 2023

NW-1, 18 MAY 2023 to 15 JUN 2023