

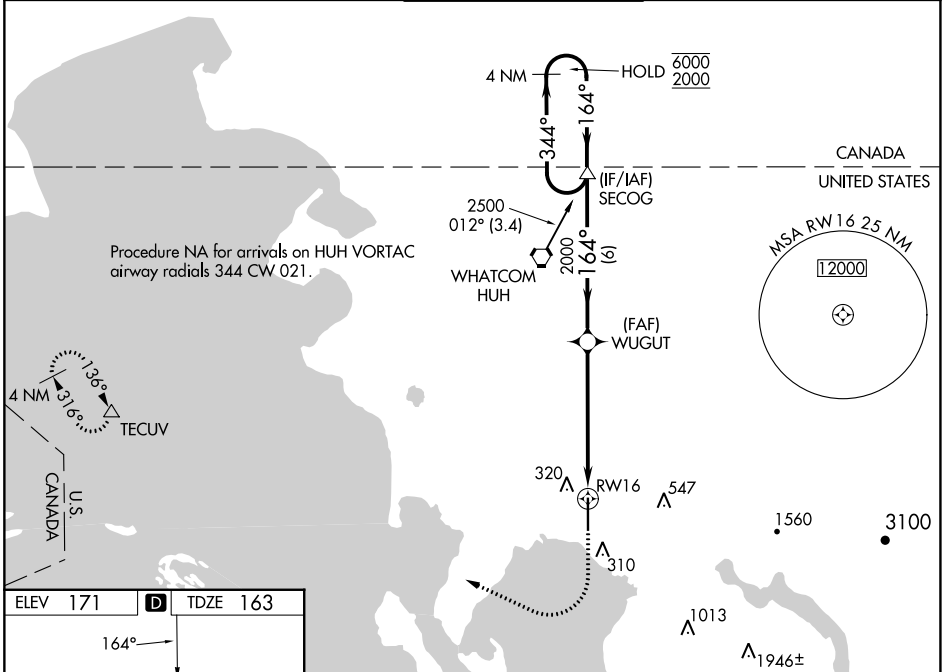
WAAS CH 45999 W16A	APP CRS 164°	Rwy Idg TDZE 163 Apt Elev 171
--	------------------------	---

RNAV (GPS) Y RWY 16

BELLINGHAM INTL (BLI)

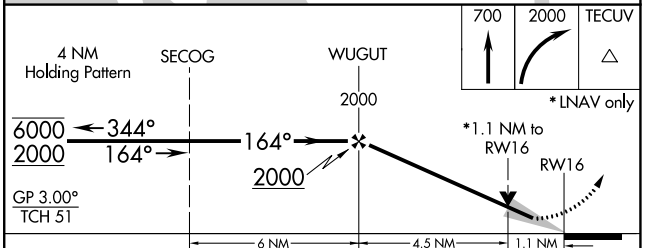
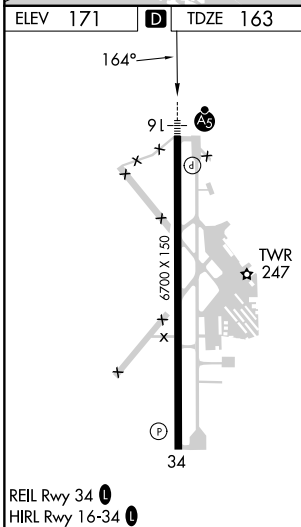
RNP APCH. A For uncompensated Baro-VNAV systems, LNAV/VNAV NA below -10°C or above 54°C. #RVR 1800 authorized with use of FD or AP or HUD to DA.	MALSR 	MISSED APPROACH: Climb to 700 then climbing right turn to 2000 direct TECUV and hold.
---	-----------	--

ATIS 134.45	VICTORIA TERMINAL APP CON 132.7 290.8	BELLINGHAM TOWER * 124.9 (CTAF) 0 379.3	GND CON 127.4 379.3	UNICOM 122.95
-----------------------	---	---	-------------------------------	-------------------------



NW-1, 18 MAY 2023 to 15 JUN 2023

NW-1, 18 MAY 2023 to 15 JUN 2023



GP 3.00° TCH 51	6 NM	4.5 NM	1.1 NM	
4 NM Holding Pattern	SECOG	WUGUT	TECUV	
6000 2000	← 344°	→ 164°	→ 164°	
2000	2000	2000	2000	
			*1.1 NM to RWY 16	
			RWY 16	
			*INAV only	
CATEGORY	A	B	C	D
LPV DA #		363/24	200 (200-½)	
LNAV/VNAV DA		491/30	328 (400-¾)	
LNAV MDA	560/24	397 (400-½)	560/35	397 (400-¾)
C CIRCLING	640-1	469 (500-1)	900-2 729 (800-2)	1160-3 989 (1000-3)