

## HYLND SIX DEPARTURE (RNAV)

AL-58 (FAA)

BOSTON, MASSACHUSETTS

|                |              |
|----------------|--------------|
| D-ATIS         | 135.0        |
| CLNC DEL       |              |
| 121.65         | 257.8        |
| CPDLC          |              |
| GND CON        |              |
| 121.75         | 121.9        |
| BOSTON TOWER   |              |
| 128.8          | 257.8 (WEST) |
| 132.225        | 257.8 (EAST) |
| BOSTON DEP CON |              |
| 133.0          |              |



MANCH

TAKEOFF MINIMUMS:

Rwy 4L, 14, 15L, 32, 33R: NA-ATC.

Rwy 4R, 9, 15R, 22R, 33L: Standard with minimum climb of 500' per NM to 520.

Rwy 22L: 300-1 with minimum climb of 500' per NM to 520, or standard with minimum climb of 500' per NM to 520 if tower reports no tall vessels in the departure area.

Rwy 27: Standard with minimum climb of 500' per NM to 1300.

NOTE: DME/DME/IRU or GPS required.

NOTE: RADAR required for non-GPS equipped aircraft.

NOTE: RNAV 1.

NOTE: For turbojets only.

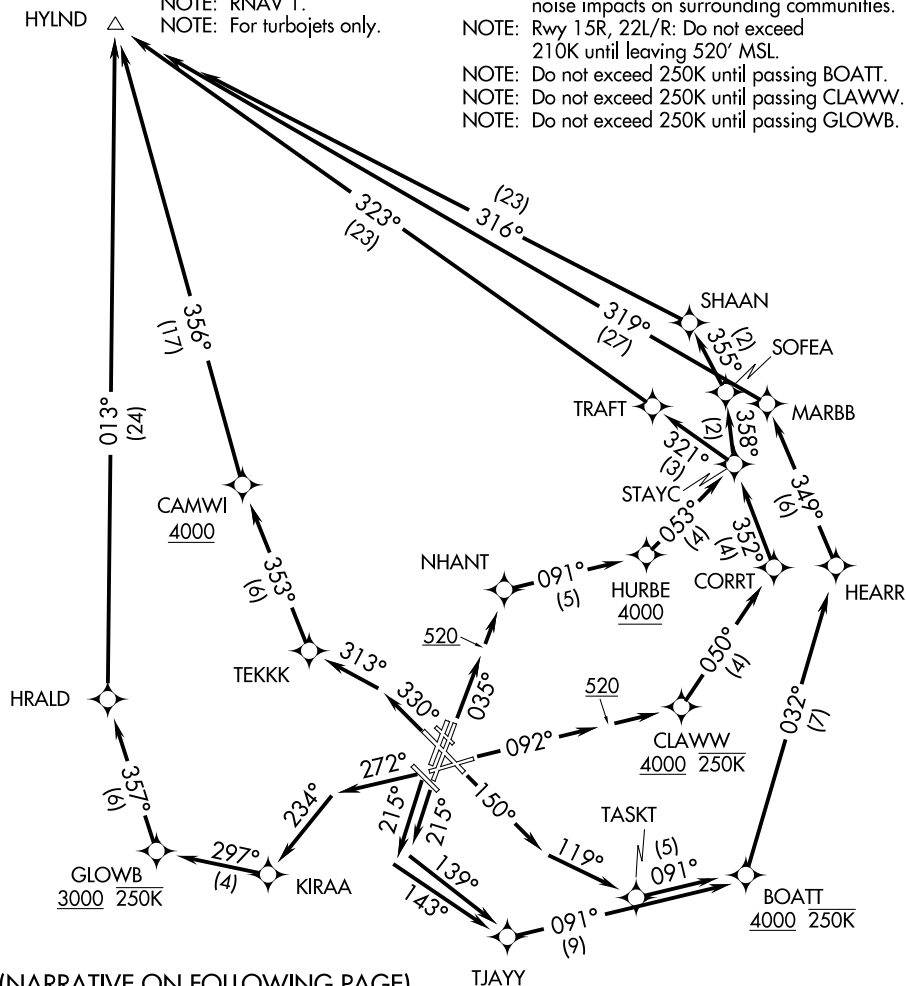
NOTE: Departure hdg/RNAV tracks/vectors are predicated on avoiding noise sensitive areas. Flight crew awareness and compliance is important in minimizing noise impacts on surrounding communities.

NOTE: Rwy 15R, 22L/R: Do not exceed 210K until leaving 520' MSL.

NOTE: Do not exceed 250K until passing BOATT.

NOTE: Do not exceed 250K until passing CLAWW.

NOTE: Do not exceed 250K until passing GLOWB.



(NARRATIVE ON FOLLOWING PAGE)

NOTE: Chart not to scale.

## HYLND SIX DEPARTURE (RNAV)

(HYLND6.HYLND) 02DEC21

BOSTON, MASSACHUSETTS

GENERAL EDWARD LAWRENCE LOGAN INTL (BOS)