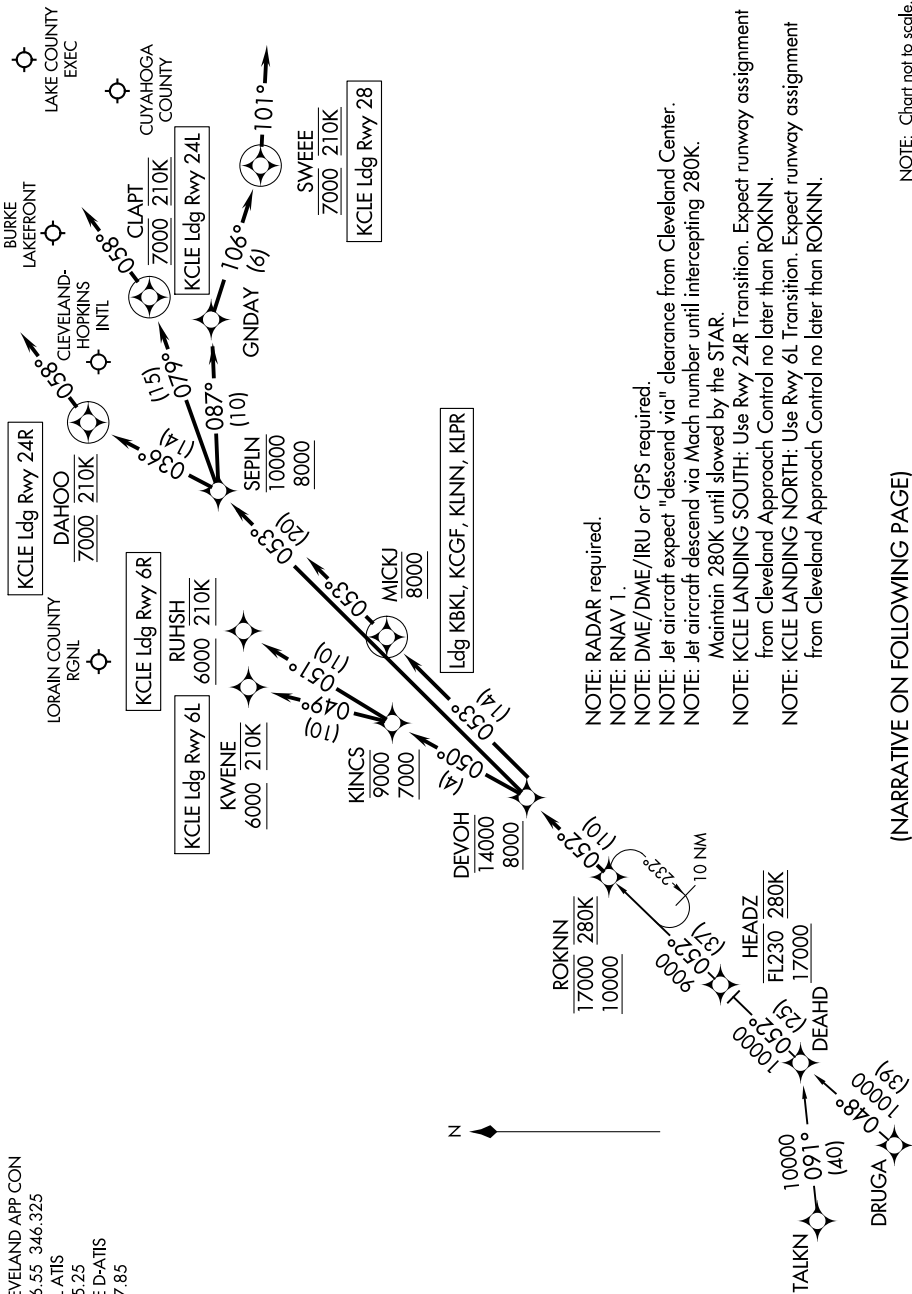


# ROKNN THREE ARRIVAL (RNAV)

CLEVELAND, OHIO

EC-2, 18 MAY 2023 to 15 JUN 2023

CLEVELAND APP CON  
126.55 346.325  
BKL ATIS  
125.25  
CLE D-ATIS  
127.85



- NOTE: RADAR required.
- NOTE: RNAV 1.
- NOTE: DME/DME/IRU or GFS required.
- NOTE: Jet aircraft expect "descend via" clearance from Cleveland Center.
- NOTE: Jet aircraft descend via Mach number until intercepting 280K. Maintain 280K until slowed by the STAR.
- NOTE: KCLIE LANDING SOUTH: Use Rwy 24R Transition. Expect runway assignment from Cleveland Approach Control no later than ROKNN.
- NOTE: KCLIE LANDING NORTH: Use Rwy 6L Transition. Expect runway assignment from Cleveland Approach Control no later than ROKNN.

NOTE: Chart not to scale.

(NARRATIVE ON FOLLOWING PAGE)

EC-2, 18 MAY 2023 to 15 JUN 2023

# ROKNN THREE ARRIVAL (RNAV)

CLEVELAND, OHIO