

WAAS CH 77618 W21A	APP CRS 214°	Rwy Idg TDZE Apt Elev	6095 4187 4187
--	------------------------	-----------------------------	---

RNAV (GPS) RWY 21

COCHISE COUNTY (P33)

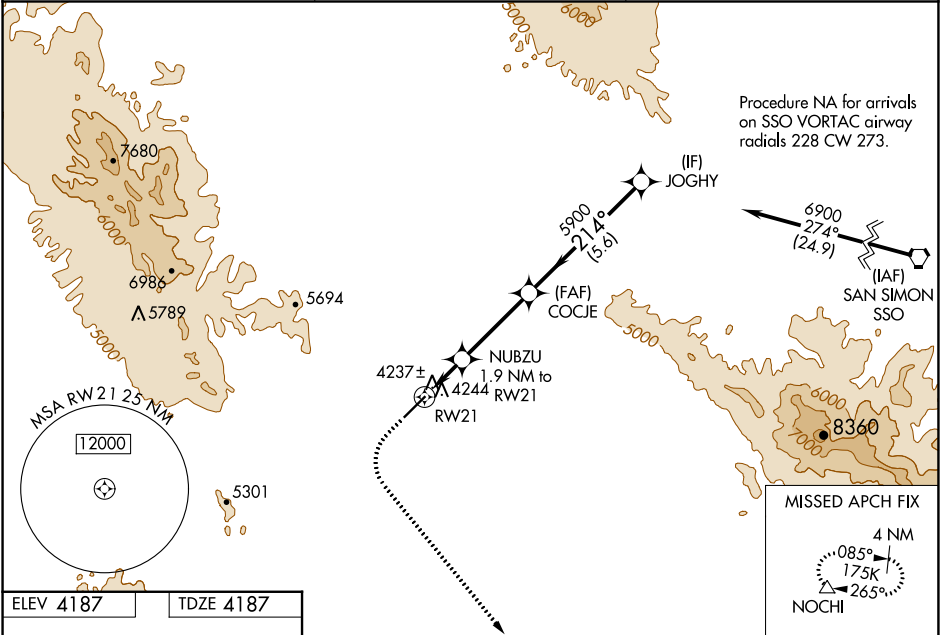
NA Baro-VNAV NA when using Douglas Bisbee altimeter setting. For uncompensated Baro-VNAV systems, LNAV/VNAV NA below -23°C (-9°F) or above 54°C (130°F). Obtain local altimeter setting on CTAF; when not received, use Douglas Bisbee altimeter setting and increase all DA/MDA 120 feet and LPV and LNAV/VNAV visibility all Cats 3/8 mile. DME/DME RNP -0.3 NA.

MISSED APPROACH: Climb to 4600 then climbing left turn to 8800 direct NOCHI and hold, continue climb-in-hold 8800.

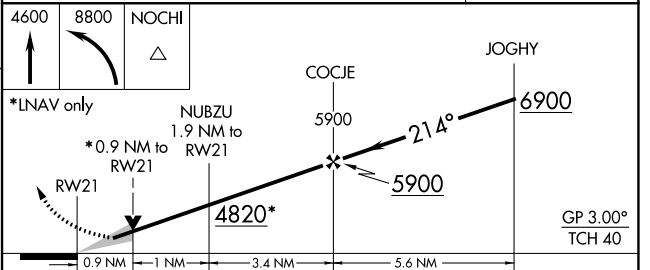
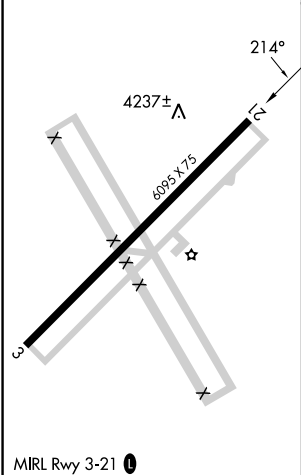
AWOS-3PT
119.025

ALBUQUERQUE CENTER
134.45 327.15

UNICOM
122.8 (CTAF) 0



ELEV 4187	TDZE 4187
-----------	-----------



CATEGORY	A	B	C	D
LPV DA	4437-7/8	250 (300-7/8)		NA
LNAV/VNAV DA	4437-7/8	250 (300-7/8)		NA
LNAV MDA	4500-1	313 (400-1)		NA
CIRCLING	4600-1	4660-1		NA
	413 (500-1)	473 (500-1)		

SW-4, 18 MAY 2023 to 15 JUN 2023

SW-4, 18 MAY 2023 to 15 JUN 2023