

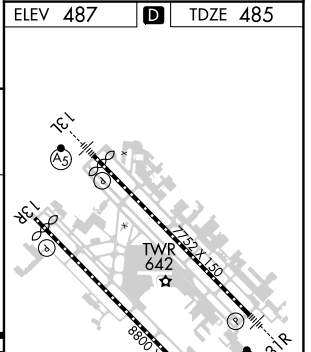
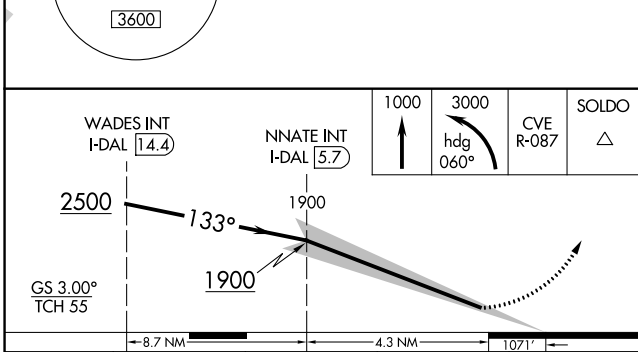
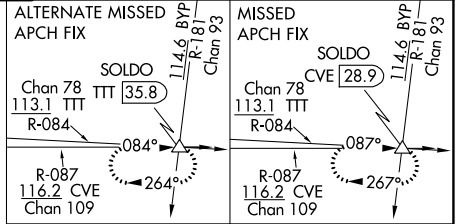
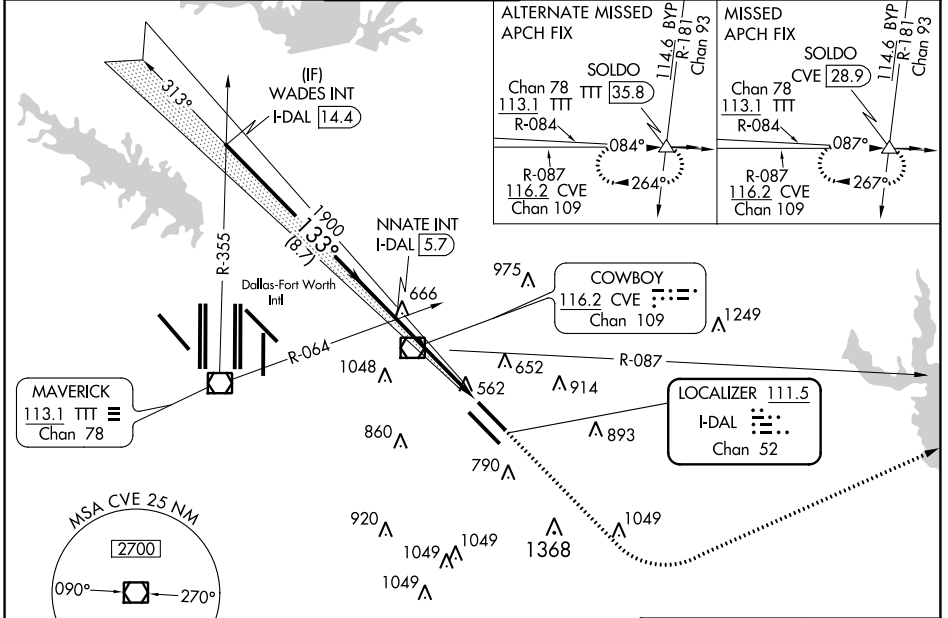
LOC/DME I-DAL	APP CRS	Rwy Idg	<b>7352</b>
<b>111.5</b>	<b>133°</b>	TDZE	<b>485</b>
Chan <b>52</b>		Apt Elev	<b>487</b>

# ILS Y RWY 13L (SA CAT I & II)

DALLAS LOVE FLD (DAL)

<b>RADAR required for procedure entry.</b> Simultaneous approach authorized. Requires specific OPSPEC, MSPEC, or LOA approval and use of HUD to DH. Reduced lighting: Requires specific OPSPEC, MSPEC, or LOA approval and use of Autoland or HUD to touchdown.		<b>MALSR</b> 	<b>MISSED APPROACH:</b> Climb to 1000 then climbing left turn to 3000 on heading 060° and CVE VOR/DME R-087 to SOLDO INT/CVE 28.9 DME and hold.
--	--	------------------	---

D-ATIS <b>120.15</b>	REGIONAL APP CON NORTH <b>124.3 282.275</b> SOUTH <b>125.2 343.65</b>	LOVE TOWER <b>123.7 239.3</b>	GND CON <b>121.75 348.6</b>	CLNC DEL <b>127.9</b>	CPDLC
-------------------------	---	----------------------------------	--------------------------------	--------------------------	-------



CATEGORY	A	B	C	D
S-ILS 13L	SA CAT I	RA 168/14	150 DA 635	
S-ILS 13L	SA CAT II	RA 144/12	100 DA 585	

**SA CATEGORY I & II ILS SPECIAL AIRCREW & AIRCRAFT CERTIFICATION REQUIRED**

ELEV 487	<b>D</b>	TDZE 485
TDZ/CL Rwy 13L and 31L HIRL Rwy 13L-31R, and 13R-31L		

SC-2, 18 MAY 2023 to 15 JUN 2023

SC-2, 18 MAY 2023 to 15 JUN 2023