

EC-2, 18 MAY 2023 to 15 JUN 2023

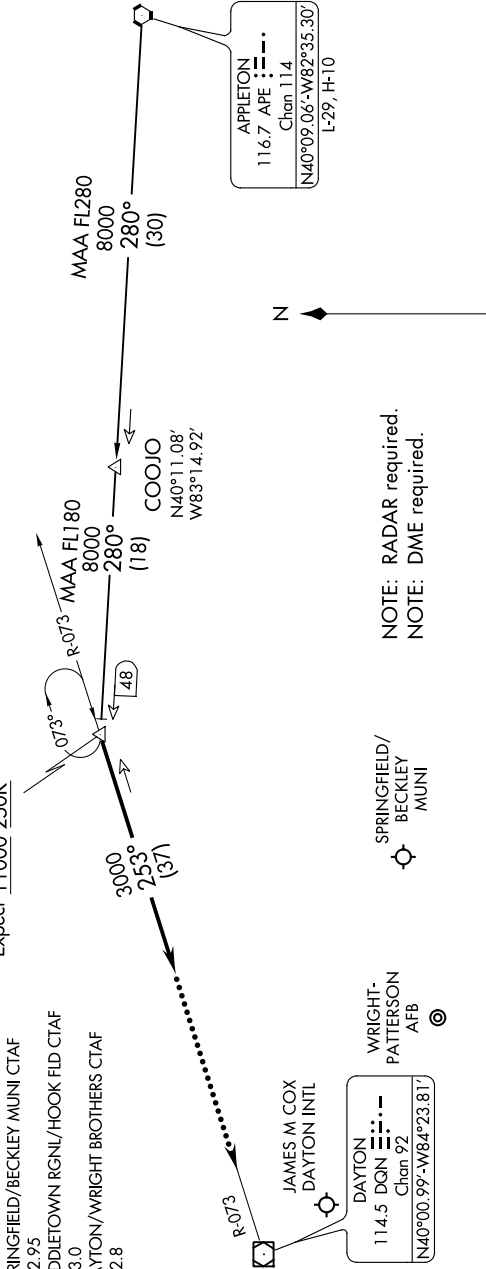
COLUMBUS APP CON
118.425 323.15
DAY ATIS
125.8
KFFO ATIS
124.475 269.9
SPRINGFIELD/BECKLEY MUNI CTAF
122.95
MIDDLETOWN RGNL/HOOK FLD CTAF
123.0
DAYTON/WRIGHT BROTHERS CTAF
122.8

DANEI

N40°12.16'-W83°38.36'

VERTICAL NAVIGATION PLANNING

Expect 11000 250K



NOTE: RADAR required.
NOTE: DME required.

SPRINGFIELD/
BECKLEY
MUNI

WRIGHT-
PATTERSON
AFB

DAYTON/
WRIGHT BROTHERS

MIDDLETOWN RGNL/
HOOK FLD

APPLETON TRANSITION (APE.DANEI3): From over APE VORTAC on APE R-280 to DAN EI. Thence....

....From over DAN EI on heading 253°. Expect RADAR vectors to final approach course.

LOST COMMUNICATIONS:

In the event of lost communications: At DAN EI, proceed direct DQN VOR/DME maintain 3000' until DQN VOR/DME.

NOTE: Chart not to scale.

EC-2, 18 MAY 2023 to 15 JUN 2023