

(KZLOV1.WINNZ) 22195

# KZLOV ONE DEPARTURE (RNAV)

AL-118 (FAA)

COLEMAN A YOUNG MUNI (DET)

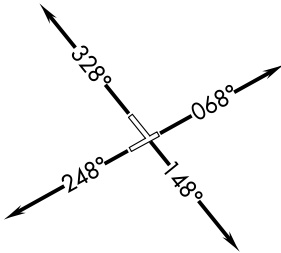
DETROIT, MICHIGAN

ATIS  
124.875  
GND CON  
121.85  
DETROIT CITY TOWER  
121.3 257.8  
DETROIT DEP CON  
134.3 284.0

RNAV 1 - DME/DME/IRU or GPS.

RADAR required.

**TOP ALTITUDE:  
ASSIGNED BY ATC**

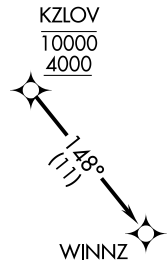


### TAKEOFF MINIMUMS:

Rwy 7, 15, 25, 33: Standard with minimum climb of 500' per NM to 1126.

NOTE: Turbojet departures at/above 10000, maintain 280K until advised by ATC.

NOTE: For use by Cleveland terminal arrivals only.



NOTE: Chart not to scale.



## DEPARTURE ROUTE DESCRIPTION

TAKEOFF RUNWAY 7: Climb on heading 068° or as assigned for RADAR vectors to cross KZLOV at or above 4000 and at or below 10000, thence....

TAKEOFF RUNWAY 15: Climb on heading 148° or as assigned for RADAR vectors to cross KZLOV at or above 4000 and at or below 10000, thence....

TAKEOFF RUNWAY 25: Climb on heading 248° or as assigned for RADAR vectors to cross KZLOV at or above 4000 and at or below 10000, thence....

TAKEOFF RUNWAY 33: Climb on heading 328° or as assigned for RADAR vectors to cross KZLOV at or above 4000 and at or below 10000, thence....

....on track 148° to WINNZ. Maintain assigned altitude, expect filed altitude ten minutes after departure.

KZLOV ONE DEPARTURE (RNAV)

(KZLOV1.WINNZ) 14JUL22

DETROIT, MICHIGAN  
COLEMAN A YOUNG MUNI (DET)

EC-1, 18 MAY 2023 to 15 JUN 2023

EC-1, 18 MAY 2023 to 15 JUN 2023