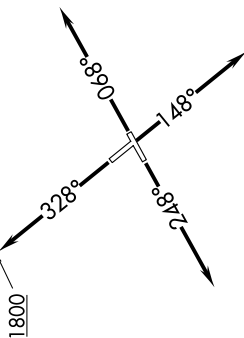


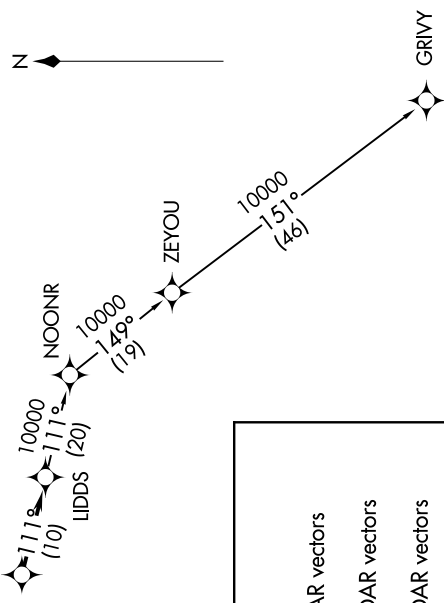
**TOP ALTITUDE:
ASSIGNED BY ATC**



TAKEOFF MINIMUMS:
 Rwys 7, 15, 33: Standard.
 Rwy 25: Standard with minimum climb
 of 210' per NM to 1000.

KZLOV
 15000
 4000

ATIS
 124.875
GND CON
 121.85
DETROIT CITY TOWER
 121.3 257.8
DETROIT DEP CON
 134.3 284.0



NOTE: RNAV 1.
NOTE: RADAR required.
NOTE: DME/DME/IRU or GPS required.
NOTE: Turbojet departures at/above 10000, maintain 280K until advised by ATC.

DEPARTURE ROUTE DESCRIPTION

TAKEOFF RUNWAY 7: Climb on heading 068° or as assigned for RADAR vectors to cross KZLOV between 4000 and 15000, thence....
TAKEOFF RUNWAY 15: Climb on heading 148° or as assigned for RADAR vectors to cross KZLOV between 4000 and 15000, thence....
TAKEOFF RUNWAY 25: Climb on heading 248° or as assigned for RADAR vectors to cross KZLOV between 4000 and 15000, thence....
TAKEOFF RUNWAY 33: Climb on heading 328° or as assigned for RADAR vectors to cross KZLOV between 4000 and 15000, thence....

....on track 111° to LIDDS, then on (transition). Maintain ATC assigned altitude, expect filed altitude 10 minutes after departure.

GRIVY TRANSITION (LIDDS2.GRIVY):

NOTE: Chart not to scale.