

(ZETTR3.ZETTR) 19339

# ZETTR THREE DEPARTURE (RNAV)

AL-118 (FAA)

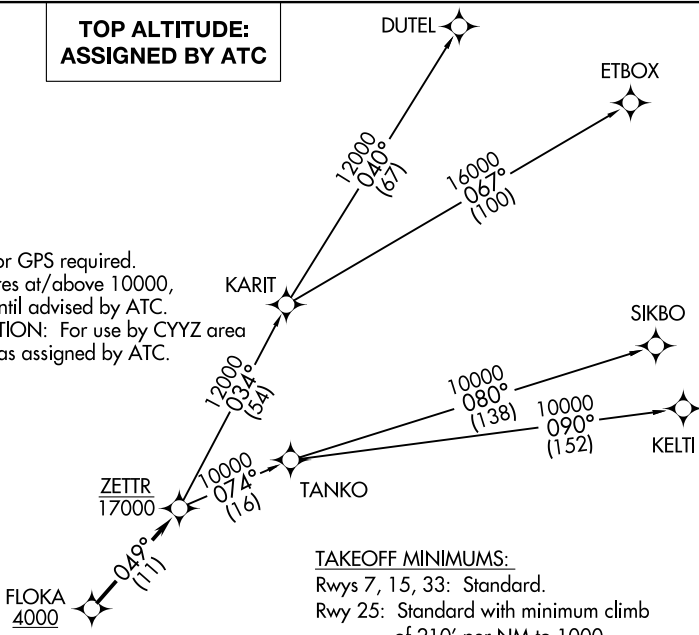
COLEMAN A YOUNG MUNI (DET)

DETROIT, MICHIGAN

ATIS  
124.875  
GND CON  
121.85  
DETROIT CITY TOWER  
121.3 257.8  
DETROIT DEP CON  
134.3 284.0

**TOP ALTITUDE:  
ASSIGNED BY ATC**

- NOTE: RNAV 1.
- NOTE: RADAR required.
- NOTE: DME/DME/IRU or GPS required.
- NOTE: Turbojet departures at/above 10000, maintain 280K until advised by ATC.
- NOTE: TANKO TRANSITION: For use by CYYZ area arrivals only, or as assigned by ATC.



TAKEOFF MINIMUMS:

Rwys 7, 15, 33: Standard.  
Rwy 25: Standard with minimum climb of 210' per NM to 1000.

**DEPARTURE ROUTE DESCRIPTION**

TAKEOFF RUNWAY 7: Climb on heading 068° or as assigned for RADAR vectors to cross FLOKA at or above 4000, thence....

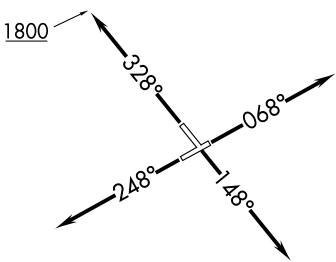
TAKEOFF RUNWAY 15: Climb on heading 148° or as assigned for RADAR vectors to cross FLOKA at or above 4000, thence....

TAKEOFF RUNWAY 25: Climb on heading 248° or as assigned for RADAR vectors to cross FLOKA at or above 4000, thence....

TAKEOFF RUNWAY 33: Climb on heading 328° to 1800 then as assigned for RADAR vectors to cross FLOKA at or above 4000, thence....

....on track 049° to cross ZETTR at or below 17000, then on (transition). Maintain ATC assigned altitude, expect filed altitude 10 minutes after departure.

- DUTEL TRANSITION (ZETTR3.DUTEL);
- ETBOX TRANSITION (ZETTR3.ETBOX);
- KELTI TRANSITION (ZETTR3.KELTI);
- SIKBO TRANSITION (ZETTR3.SIKBO);
- TANKO TRANSITION (ZETTR3.TANKO);



NOTE: Chart not to scale.

ZETTR THREE DEPARTURE (RNAV)  
(ZETTR3.ZETTR) 05DEC19

DETROIT, MICHIGAN  
COLEMAN A YOUNG MUNI (DET)

EC-1, 18 MAY 2023 to 15 JUN 2023

EC-1, 18 MAY 2023 to 15 JUN 2023