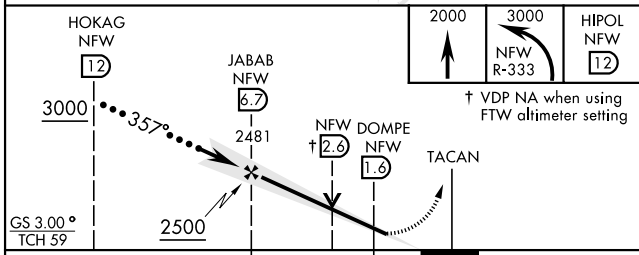
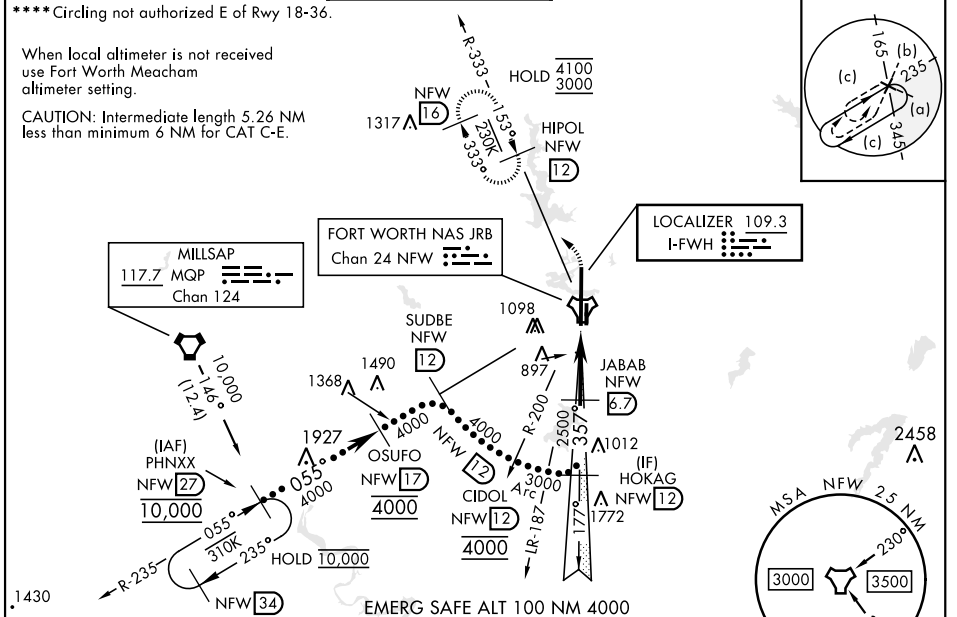


HI-ILS Y or LOC Y RWY 36

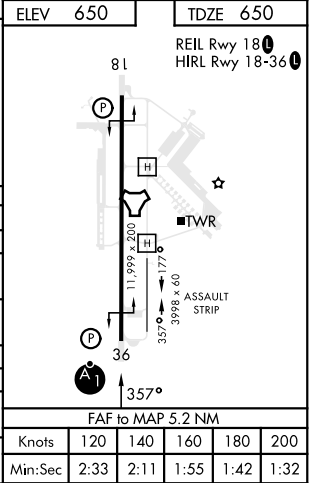
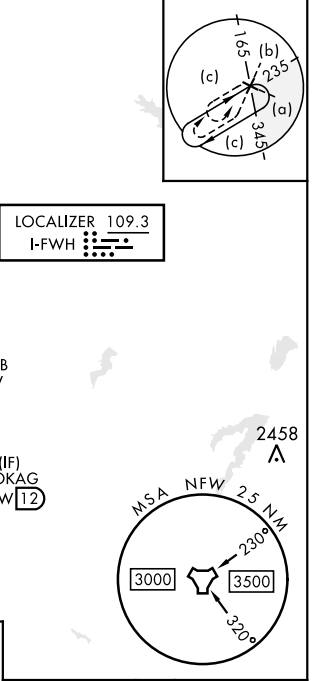
LOC I-FWH 109.3	APCH CRS 357°	Rwy Ldg 11,999 TDZE 650 Arpt Elev 650	AL-160 [USN]	FORT WORTH NAS JRB (CARSWELL FLD) (KNFW)
---------------------------	-------------------------	--	--------------	--

TACAN required. * When ALS inop, increase vis to 3/4 mile. ** When ALS inop, increase vis to 1 1/2 miles. *** When ALS inop, increase vis to 1 3/8 miles.	ALSF-1 	MISSED APPROACH: Climb to 2000, then climbing left turn to 3000 to intercept NFW TACAN R-333 to HIPOL and hold.
--	------------	---

ATIS* 351.675	REGIONAL APP CON 125.8 257.95	NAVY FORT WORTH TOWER* 120.950 269.325	GND CON 121.675 279.575	CLNC DEL 126.4 254.325	ASR/PAR
-------------------------	---	--	-----------------------------------	----------------------------------	---------



	C	D	E
S-ILS 36*	850-1/2	200	(200-1/2)
S-LOC 36**	1180-1	530	(600-1)
CIRCLING****	1320-1 3/4 670 (700-1 3/4)	1340-2 1/4 690 (700-2 1/4)	1440-2 3/4 790 (800-2 3/4)
FORT WORTH MEACHAM ALTIMETER			
S-ILS 36*	870-1/2	220	(300-1/2)
S-LOC 36***	1200-1 1/8	550	(600-1 1/8)
CIRCLING****	1340-2 690 (700-2)	1360-2 1/4 710 (800-2 1/4)	1460-2 3/4 810 (900-2 3/4)



HI-ILS Y or LOC Y RWY 36

SC-2, 18 MAY 2023 TO 15 JUN 2023

SC-2, 18 MAY 2023 TO 15 JUN 2023