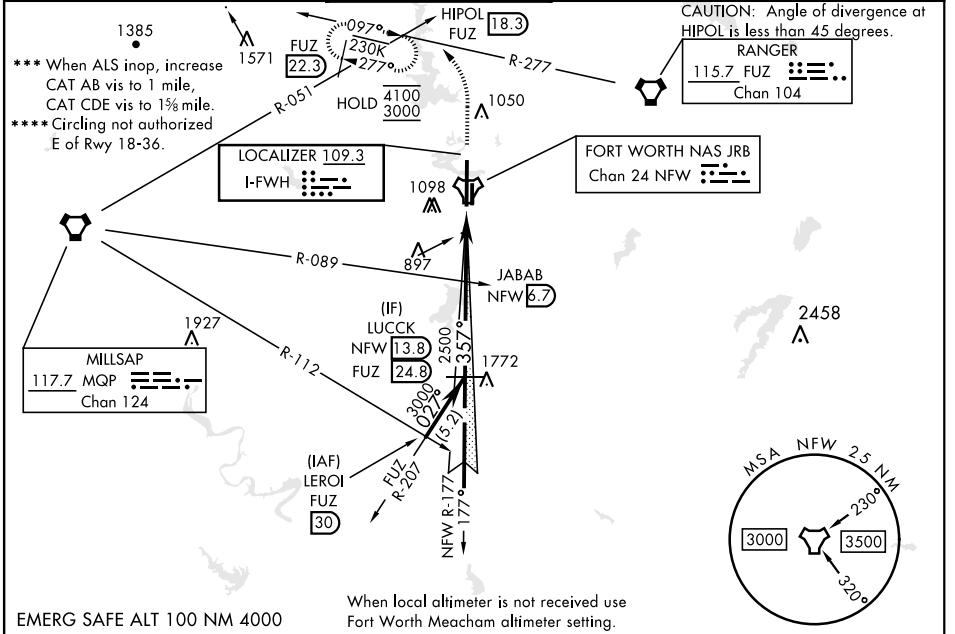


ILS Z or LOC Z RWY 36

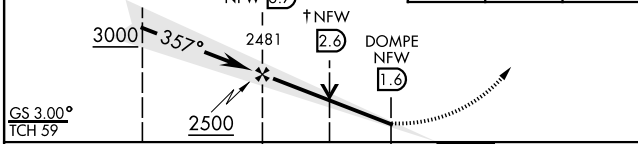
LOC I-FWH 109.3	APCH CRS 357°	Rwy Ldg 11,999 TDZE 650 Arpt Elev 650	AL-160 [USN]	FORT WORTH NAS JRB (CARSWELL FLD) (KNFW)
---------------------------	-------------------------	--	---------------------	---

<p>FUZ VORTAC or RADAR required.</p> <p>▽ * When ALS inop, increase vis to ¾ mile. ** When ALS inop, increase CAT AB vis to 1 mile, CAT CDE vis to 1½ mile.</p>	<p>ALS F-1</p>	<p>MISSED APPROACH: Climb to 2000, then climbing left turn to 3000 heading 330° and FUZ VORTAC R-277 to HIPOL and hold. FUZ VORTAC required for missed approach.</p>
---	-----------------------	---

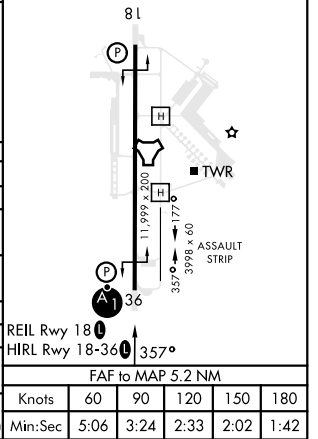
ATIS* 351.675	REGIONAL APP CON 125.8 257.95	NAVY FORT WORTH TOWER* 120.950 269.325	GND CON 121.675 279.575	CLNC DEL 126.4 254.325	ASR/PAR
-------------------------	---	--	-----------------------------------	----------------------------------	----------------



EMERG SAFE ALT 100 NM 4000	VDP NA when using FTW altimeter setting	<table border="1"> <tr> <td>2000</td> <td>3000</td> </tr> <tr> <td>↑</td> <td>hdg 330°</td> </tr> </table>	2000	3000	↑	hdg 330°	HIPOL	ELEV 650	TDZE 650
2000	3000								
↑	hdg 330°								



CATEGORY	A	B	C	D	E
S-ILS 36*	850-½		200	(200-½)	
S-LOC 36**	1180-½	530 (600-½)	1180-1		530 (600-1)
CIRCLING****	1220-1 570 (600-1)	1320-1 670 (700-1)	1320-1¾ 670 (700-¾)	1340-2¼ 690 (700-2¼)	1440-2¾ 790 (800-2¾)
FORT WORTH MEACHAM ALTIMETER					
S-ILS 36*	870-½		220	(300-½)	
S-LOC 36***	1200-½	550 (600-½)	1200-1½		550 (600-1½)
CIRCLING****	1240-1 590 (600-1)	1340-1 690 (700-1)	1340-2 690 (700-2)	1360-2¼ 710 (800-2¼)	1460-2¾ 810 (900-2¾)



ILS Z or LOC Z RWY 36

SC-2, 18 MAY 2023 to 15 JUN 2023

SC-2, 18 MAY 2023 to 15 JUN 2023