

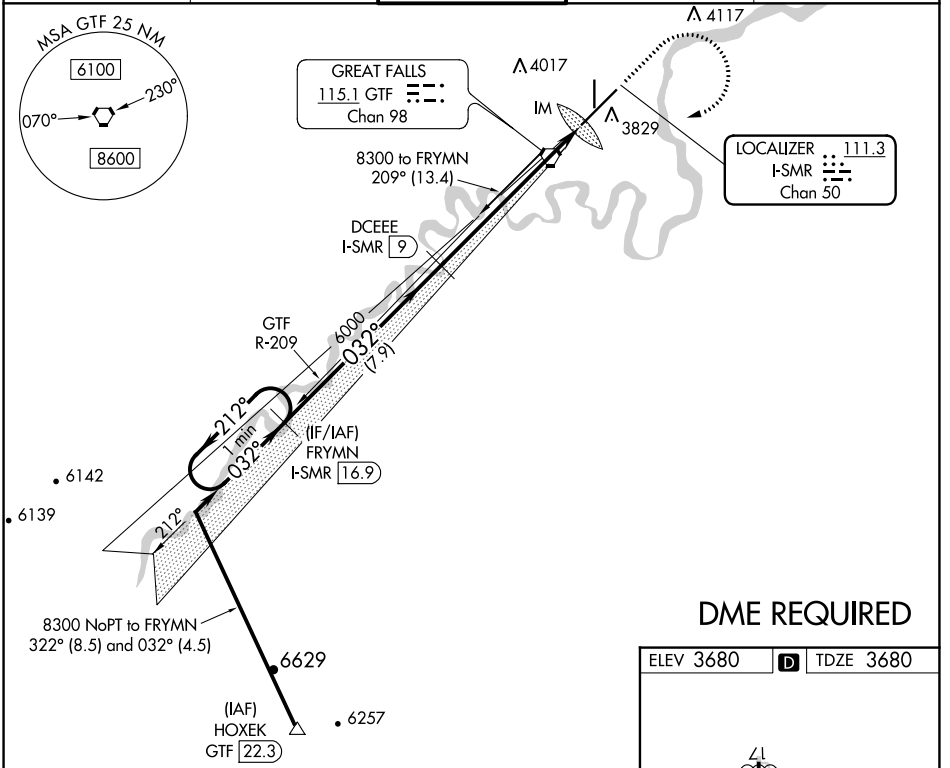
LOC/DME I-SMR <b>111.3</b> Chan 50	APP CRS <b>032°</b>	Rwy Idg <b>10502</b> TDZE <b>3680</b> Apt Elev <b>3680</b>
--	------------------------	--

# ILS RWY 3 (CAT II & III)

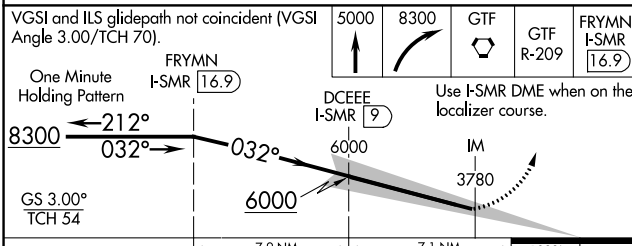
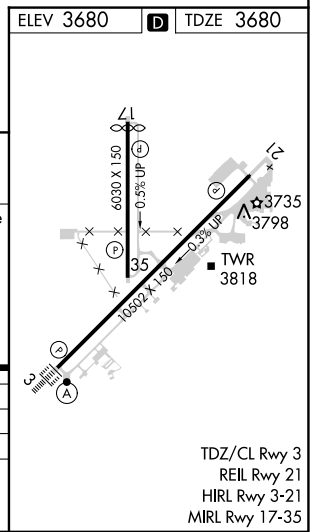
GREAT FALLS INTL (GTF)

<p><b>⚠</b> CAT II: RVR 1000 authorized with specific OPSPEC, MSPEC, or LOA approval and use of autoland or HUD to touchdown. DME required.</p>	<p>ALSF-2</p>	<p>MISSED APPROACH: Climb to 5000 then climbing right turn to 8300 direct GTF VORTAC then on GTF VORTAC R-209 to FRYMNI/I-SMR 16.9 DME and hold.</p>
---	---------------	--

ATIS <b>126.6 269.0</b>	GREAT FALLS APP CON <b>128.6 379.175</b>	GREAT FALLS TOWER <b>118.7 282.2</b>	GND CON <b>121.7 348.6</b>	CLNC DEL <b>121.7 348.6</b>
----------------------------	---	---	-------------------------------	--------------------------------



## DME REQUIRED



CATEGORY	A	B	C	D
S-ILS 3	CAT II RA 96/12 100 DA 3780			
S-ILS 3	CAT III RVR 06			
<b>CATEGORY II &amp; III ILS - SPECIAL AIRCREW &amp; AIRCRAFT CERTIFICATION REQUIRED</b>				

TDZ/CL Rwy 3  
REIL Rwy 21  
HIRL Rwy 3-21  
MIRL Rwy 17-35

NW-1, 18 MAY 2023 to 15 JUN 2023

NW-1, 18 MAY 2023 to 15 JUN 2023