

RNAV (RNP) Z RWY 21

GREAT FALLS INTL (GTF')

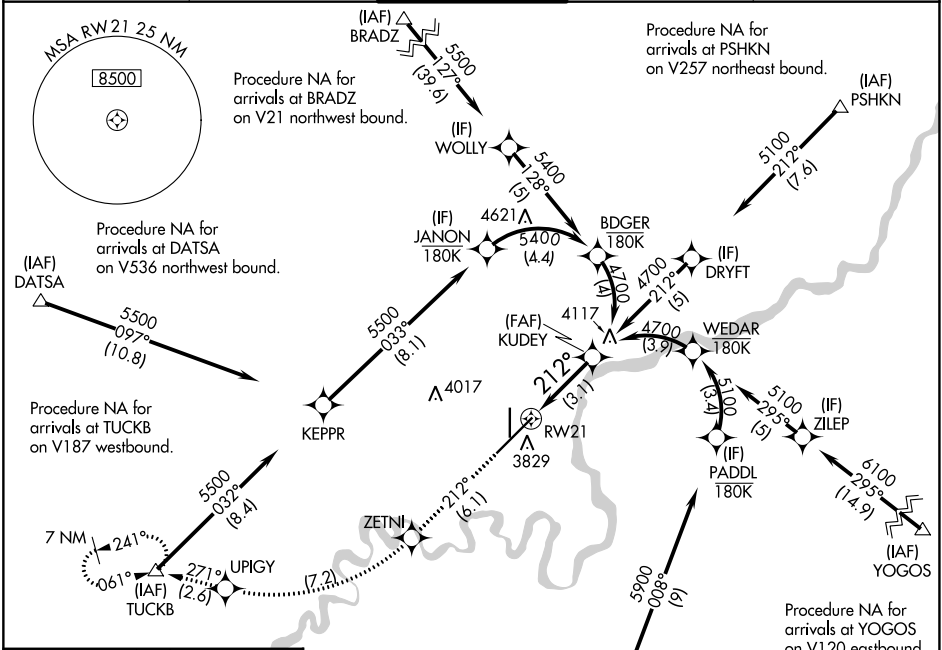
APP CRS	Rwy Idg	10502
212°	TDZE	3669
	Apt Elev	3680

RNP AR APCH - GPS.

▼ For uncompensated Baro-VNAV systems, procedure NA below -24°C or above 54°C.

MISSED APPROACH: Climb to 8000 on track 212° to ZETNI, right turn to UPIGY and on track 271° to TUCKB and hold, continue climb-in-hold to 8000.

ATIS 126.6 269.0	GREAT FALLS APP CON 128.6 379.175	GREAT FALLS TOWER 118.7 282.2	GND CON 121.7 348.6	CLNC DEL 121.7 348.6
----------------------------	---	---	-------------------------------	--------------------------------



NW-1, 18 MAY 2023 to 15 JUN 2023

NW-1, 18 MAY 2023 to 15 JUN 2023

ELEV 3680 **D** TDZE 3669

212° to RWY 21

Procedure NA for arrivals at URELE on V536 southbound.

8000 ZETNI UPIGY TUCKB KUDEY 4700

tr 212° tr 271°

VGSI and RNAV glidepath not coincident (VGSI Angle 3.00/TCH 75).

RWY 21

See planview for multiple IF locations.

3.1 NM

CATEGORY	A	B	C	D
RNP 0.10 DA	3942/45 273 (300-7%)			
RNP 0.30 DA	3992/50 323 (400-1)			

AUTHORIZATION REQUIRED

TDZ/CL Rwy 3
REIL Rwy 21
HIRL Rwy 3-21
MIRL Rwy 17-35