

APP CRS	Rwy Idg	<b>10502</b>
<b>032°</b>	TDZE	<b>3680</b>
	Apt Elev	<b>3680</b>

# RNAV (RNP) Z RWY 3

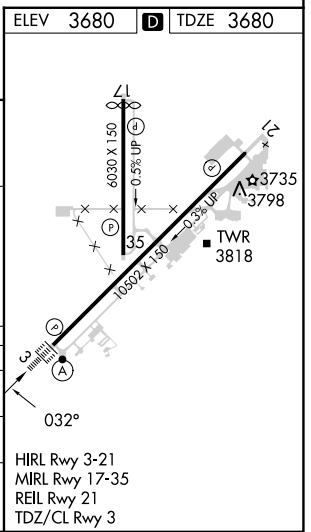
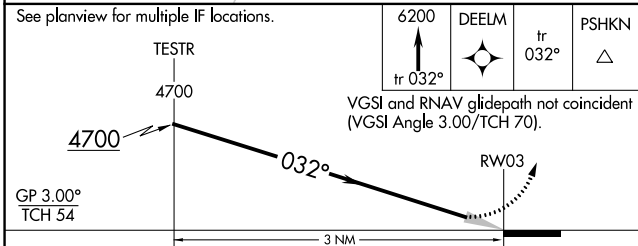
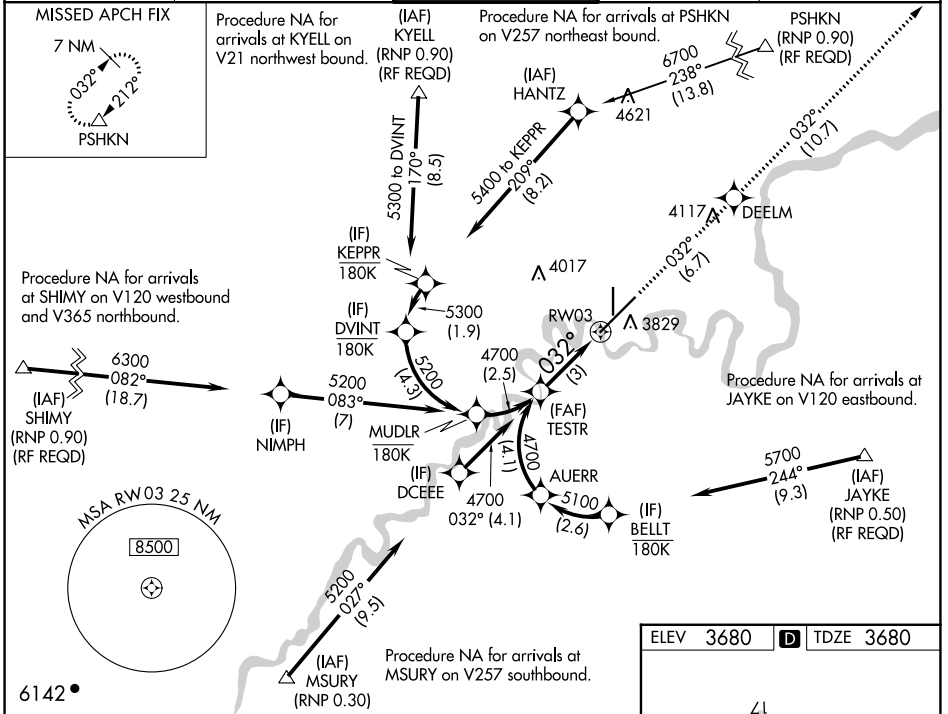
GREAT FALLS INTL (GTF)

**GPS required.** For uncompensated Baro-VNAV systems, procedure NA below -22°C or above 40°C. For inoperative ALS increase RNP 0.10 DA visibility all Cats to RVR 4500, increase RNP 0.30 DA visibility all Cats to RVR 6000.

**ALS-F-2**

**MISSED APPROACH:** Climb to 6200 on track 032° to DEELM and on track 032° to PSHKN and hold.

ATIS <b>126.6 269.0</b>	GREAT FALLS APP CON <b>128.6 379.175</b>	GREAT FALLS TOWER <b>118.7 282.2</b>	GND CON <b>121.7 348.6</b>	CLNC DEL <b>121.7 348.6</b>
----------------------------	---	---	-------------------------------	--------------------------------



CATEGORY	A	B	C	D
RNP 0.10 DA		3990/24	310 (400-½)	
RNP 0.30 DA		4079/45	399 (400-¾)	

**AUTHORIZATION REQUIRED**

HIRL Rwy 3-21  
MIRL Rwy 17-35  
REIL Rwy 21  
TDZ/CL Rwy 3

NW-1, 18 MAY 2023 to 15 JUN 2023

NW-1, 18 MAY 2023 to 15 JUN 2023