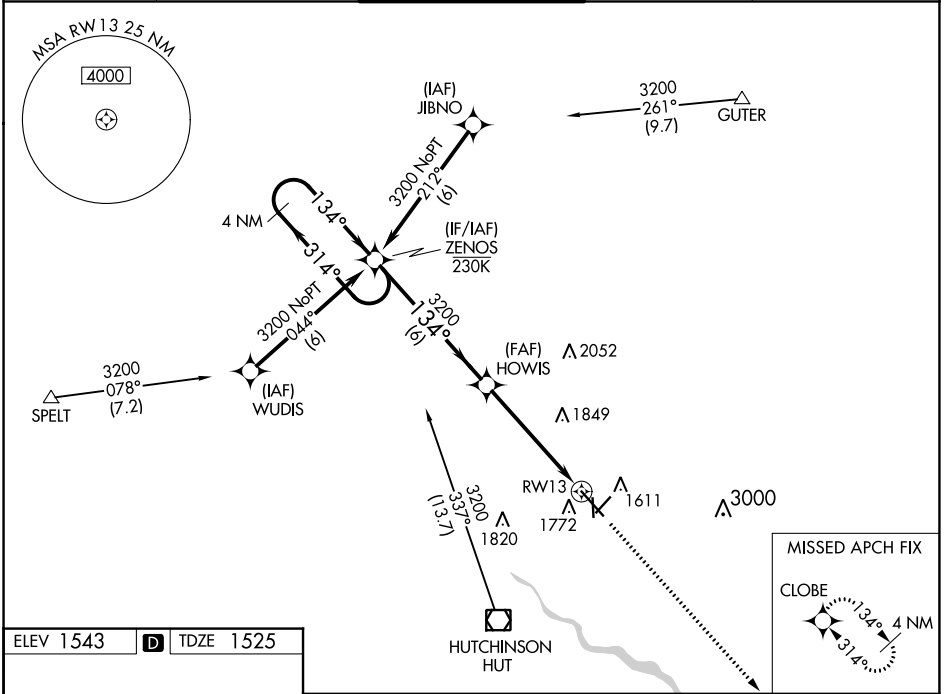


WAAS CH <b>50210</b> <b>W13A</b>	APP CRS <b>134°</b>	Rwy Idg TDZE Apt Elev	<b>7003</b> <b>1525</b> <b>1543</b>
--	------------------------	-----------------------------	---

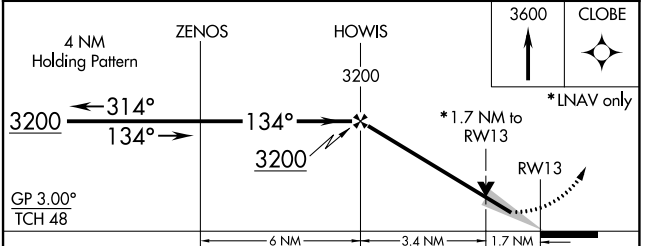
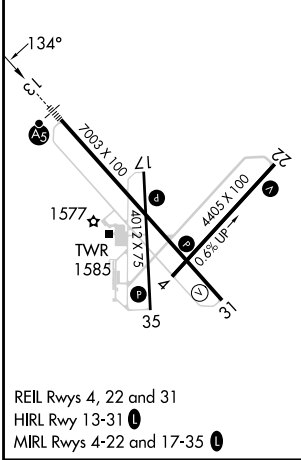
# RNAV (GPS) RWY 13

HUTCHINSON RGNL (HUT)

RNP APCH-GPS		MALSR		MISSED APPROACH: Climb to 3600 direct CLOBE and hold.	
Circling to Rwy 22 NA at night. For uncompensated Baro-VNAV systems, LNAV/VNAV NA below -18°C or above 54°C. # RVR 1800 authorized with use of FD or HUD to DA.		MALSR			
ATIS <b>124.25</b>	WICHITA APP CON <b>125.5 306.2</b>	HUTCHINSON TOWER * <b>118.5 (CTAF) 363.0</b>	GND CON <b>121.9</b>	UNICOM <b>122.95</b>	



ELEV 1543	<b>D</b>	TDZE 1525
-----------	----------	-----------



CATEGORY	A	B	C	D
LPV DA#	1725/24 200 (200-½)			
LNAV/VNAV DA	1932/40 407 (400-¾)			
LNAV MDA	2120/24 595 (600-½)		2120-1¼ 595 (600-1¼)	
<b>C</b> CIRCLING	2120-1 577 (600-1)		2200-1¾ 2720-3 657 (700-1¼) 1177 (1200-3)	

NC-2, 18 MAY 2023 to 15 JUN 2023

NC-2, 18 MAY 2023 to 15 JUN 2023