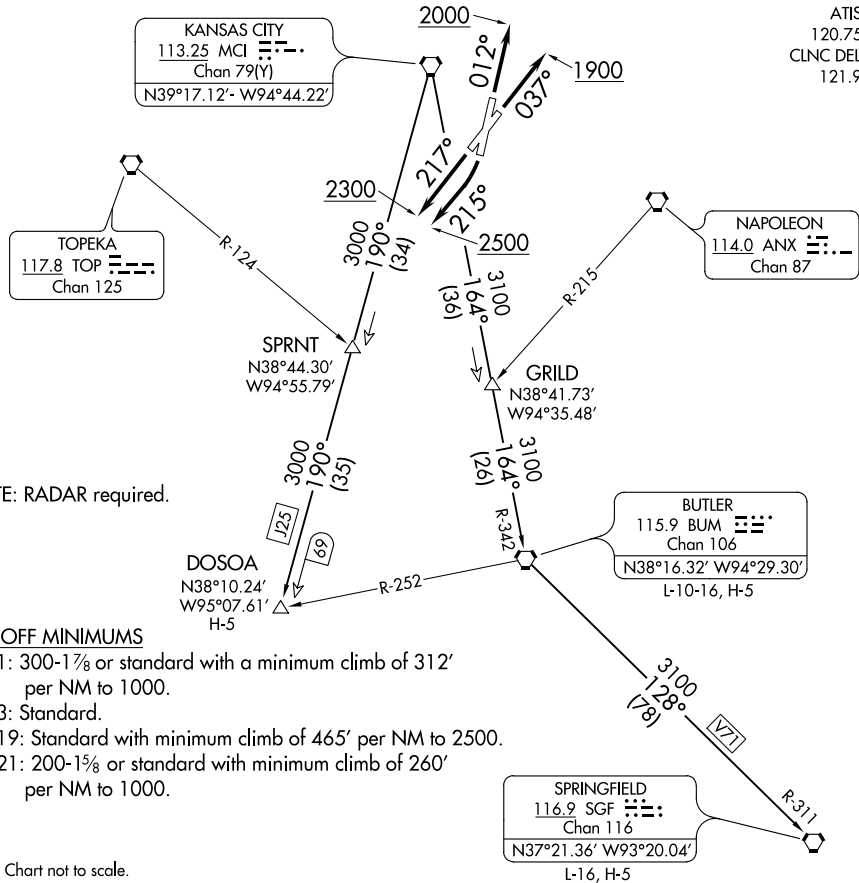


RACER SEVEN DEPARTURE

AL-213 (FAA)

CHARLES B WHEELER DOWNTOWN (MKC)
KANSAS CITY, MISSOURI

ATIS
120.75
CLNC DEL
121.9



NOTE: RADAR required.

TAKEOFF MINIMUMS

- Rwy 1: 300-1 $\frac{7}{8}$ or standard with a minimum climb of 312' per NM to 1000.
- Rwy 3: Standard.
- Rwy 19: Standard with minimum climb of 465' per NM to 2500.
- Rwy 21: 200-1 $\frac{7}{8}$ or standard with minimum climb of 260' per NM to 1000.

NOTE: Chart not to scale.

DEPARTURE ROUTE DESCRIPTION

- TAKEOFF RUNWAY 1:** Climb heading 012° to 2000, thence. . .
- TAKEOFF RUNWAY 3:** Climb heading 037° to 1900, thence. . .
- TAKEOFF RUNWAY 19:** Climbing right turn heading 215° to 2500, thence. . .
- TAKEOFF RUNWAY 21:** Climb heading 217° to 2300, thence. . .

. . . climb on assigned heading for RADAR vectors to appropriate route. Expect filed altitude 10 minutes after departure.

BUTLER TRANSITION (RACER7.BUM): From over MCI VORTAC on MCI R-164 and BUM R-342 to BUM VORTAC.

DOSOA TRANSITION (RACER7.DOSOA): From over MCI VORTAC on MCI R-190 to DOSOA.

SPRINGFIELD TRANSITION (RACER7.SGF): From over MCI VORTAC on MCI R-164 and BUM R-342 to BUM VORTAC, then on BUM R-128 and SGF R-311 to SGF VORTAC.

RACER SEVEN DEPARTURE

NC-3, 18 MAY 2023 to 15 JUN 2023

NC-3, 18 MAY 2023 to 15 JUN 2023