

(TIFTO7.MCI) 23054

TIFTO SEVEN DEPARTURE

CHARLES B WHEELER DOWNTOWN (MKC)

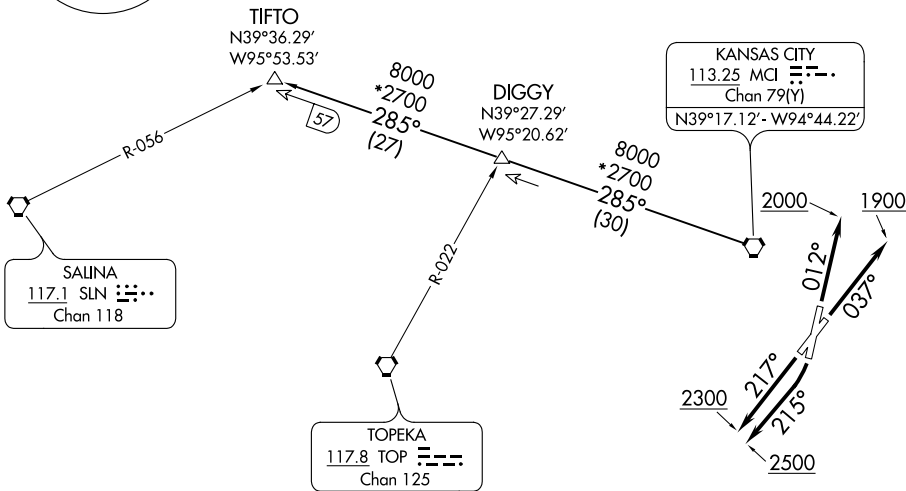
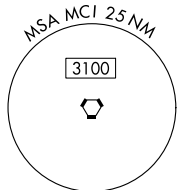
AL-213 (FAA)

KANSAS CITY, MISSOURI

**TOP ALTITUDE:
10000**

RADAR required.

ATIS
120.75
CLNC DEL
121.9
KANSAS CITY DEP CON
118.4 307.35



TAKEOFF MINIMUMS

- Rwy 1: 300-1 $\frac{3}{8}$ or standard with minimum climb of 312' per NM to 1000.
- Rwy 3: Standard.
- Rwy 19: Standard with minimum climb of 465' per NM to 2500.
- Rwy 21: 300-1 $\frac{3}{8}$ or standard with minimum climb of 260' per NM to 1000.

NOTE: Chart not to scale



DEPARTURE ROUTE DESCRIPTION

- TAKEOFF RUNWAY 1: Climb on heading 012° to 2000, thence. . .
 - TAKEOFF RUNWAY 3: Climb on heading 037° to 1900, thence. . .
 - TAKEOFF RUNWAY 19: Climbing right turn heading 215° to 2500, thence. . .
 - TAKEOFF RUNWAY 21: Climb on heading 217° to 2300, thence. . .
- . . . climb on assigned heading for RADAR vectors to appropriate route. Maintain 10000 or as assigned by ATC, expect filed altitude 10 minutes after departure.
- TIFTO TRANSITION (TIFTO7.TIFTO): From over MCI VORTAC on MCI R-285 to TIFTO.

TIFTO SEVEN DEPARTURE

(TIFTO7.MCI) 23FEB23

KANSAS CITY, MISSOURI

CHARLES B WHEELER DOWNTOWN (MKC)

NC-3, 18 MAY 2023 to 15 JUN 2023

NC-3, 18 MAY 2023 to 15 JUN 2023