

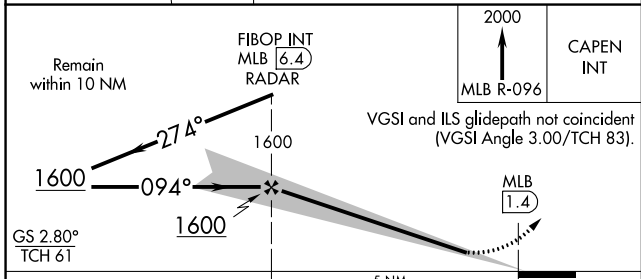
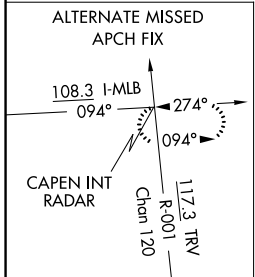
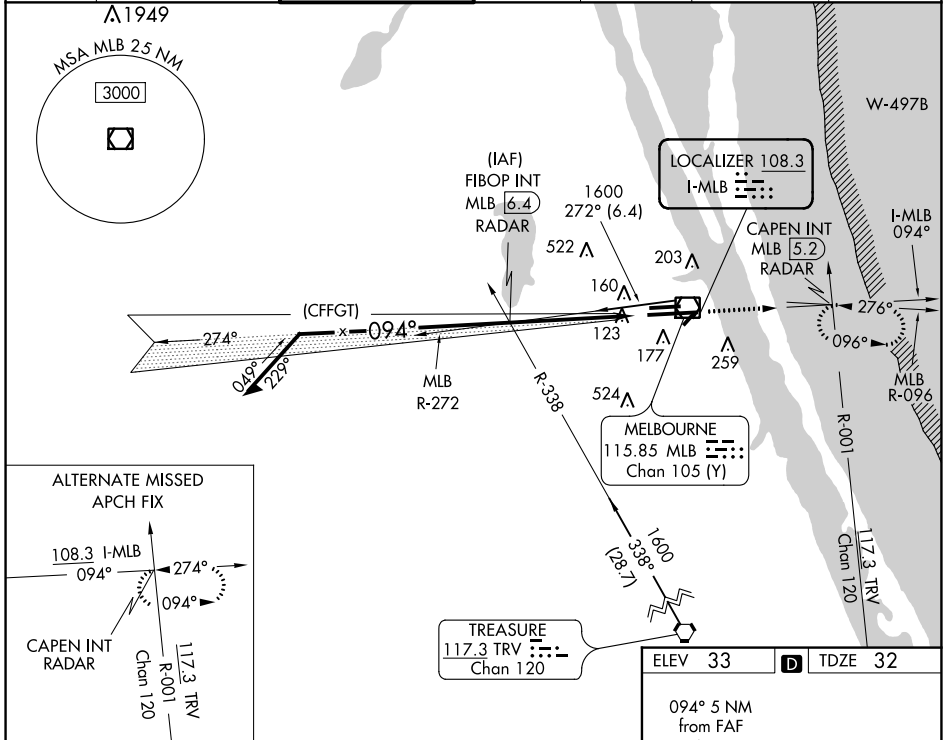
LOC I-MLB <b>108.3</b>	APP CRS <b>094°</b>	Rwy Idg <b>10181</b>
		TDZE <b>32</b>
		Apt Elev <b>33</b>

# ILS or LOC RWY 9R

MELBOURNE ORLANDO INTL (MLB)

DME or RADAR required.		MALSR	MISSED APPROACH: Climb to 2000 on MLB VOR/DME R-096 to CAPEN INT/MLB VOR/DME 5.2 DME/RADAR and hold.			

ATIS <b>132.55</b>	ORLANDO APP CON <b>132.65 281.425</b>	MELBOURNE TOWER ★ <b>118.2 (CTAF) 257.8</b>	GND CON <b>121.9</b>	CLNC DEL <b>121.9</b>	CLNC DEL <b>132.65</b> (When twr closed)	UNICOM <b>122.95</b>
-----------------------	--	--	-------------------------	--------------------------	--	-------------------------



CATEGORY	A	B	C	D
S-ILS 9R		232/18	200 (200-½)	
S-LOC 9R	420/24	388 (400-½)	420/35	388 (400-⅝)
CIRCLING	500-1 467 (500-1)	560-1 527 (600-1)	680-1¾ 647 (700-1¾)	880-2¾ 847 (900-2¾)

ELEV 33 TDZE 32

094° 5 NM from FAF

REIL Rwy 27L  
HIRL Rwy 9R-27L  
MIRL Rws 5-23 and 9L-27R  
TDZ/CL Rwy 9R

FAF to MAP 5 NM

Knots	60	90	120	150	180
Min:Sec	5:00	3:20	2:30	2:00	1:40

SE-3, 18 MAY 2023 to 15 JUN 2023

SE-3, 18 MAY 2023 to 15 JUN 2023