

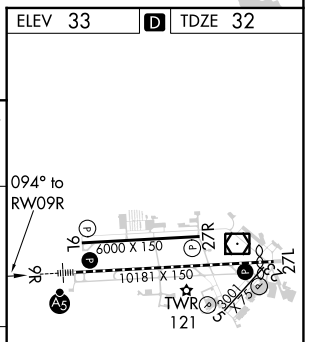
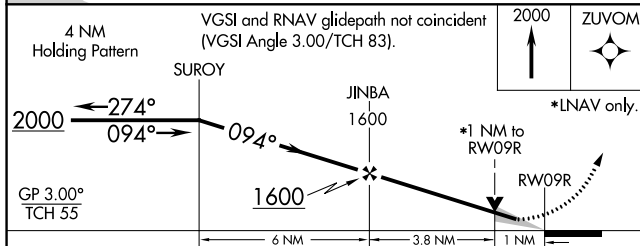
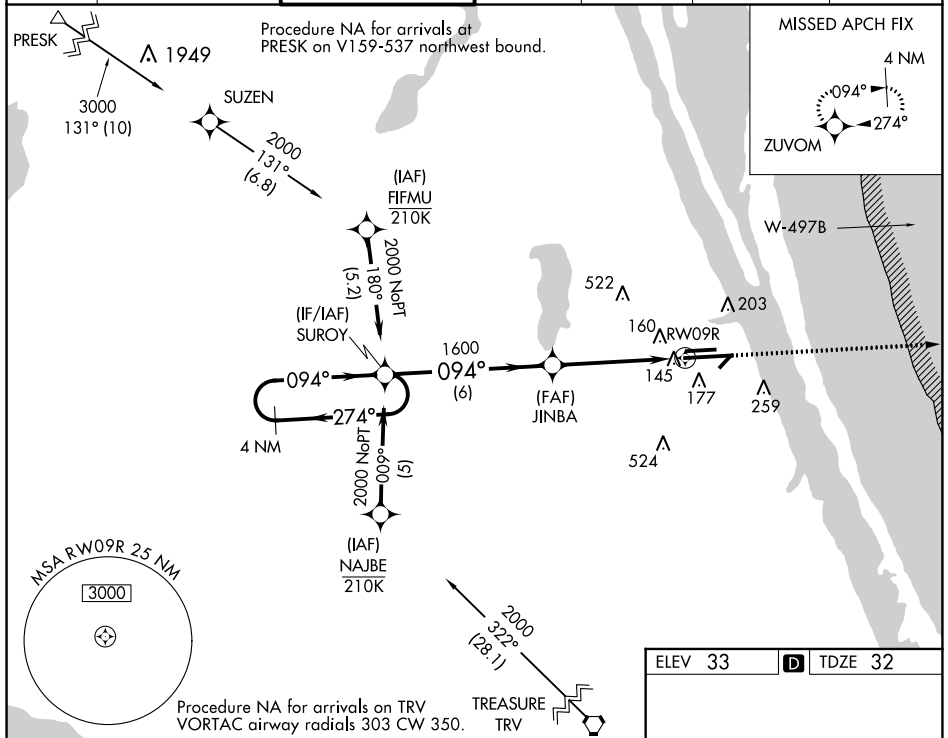
WAAS CH 60901 W09B	APP CRS 094°	Rwy Idg 10181 TDZE 32 Apt Elev 33
--	------------------------	--

RNAV (GPS) RWY 9R

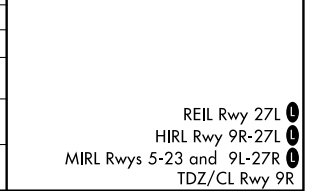
MELBOURNE ORLANDO INTL (MLB)

RNP APCH.		MALSR		MISSED APPROACH: Climb to 2000 direct ZUVOM and hold.	
For uncompensated Baro-VNAV systems, LNAV/VNAV NA below -15°C or above 54°C.		MALSR			

ATIS 132.55	ORLANDO APP CON 132.65 281.425	MELBOURNE TOWER * 118.2 (CTAF) 257.8	GND CON 121.9	CLNC DEL 121.9	CLNC DEL 132.65 (When twr closed)	UNICOM 122.95
-----------------------	--	--	-------------------------	--------------------------	--	-------------------------



CATEGORY	A	B	C	D
LPV DA	232/18		200 (200-½)	
LNAV/VNAV DA	427/40		395 (400-¾)	
LNAV MDA	420/24 388 (400-½)		420/35 388 (400-⅝)	
CIRCLING	500-1 467 (500-1)	560-1 527 (600-1)	680-1¾ 647 (700-1¾)	880-2¾ 847 (900-2¾)



SE-3, 18 MAY 2023 to 15 JUN 2023

SE-3, 18 MAY 2023 to 15 JUN 2023