

WAAS CH <b>70304</b> <b>W32A</b>	APP CRS <b>320°</b>	Rwy ldg TDZE Apt Elev	<b>9618</b> <b>25</b> <b>26</b>
----------------------------------------	------------------------	-----------------------------	---------------------------------------


# RNAV (GPS) RWY 32

MOBILE INTL (BFM)

RNP APCH - GPS.

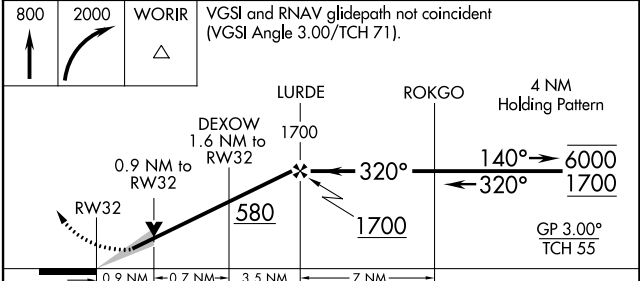
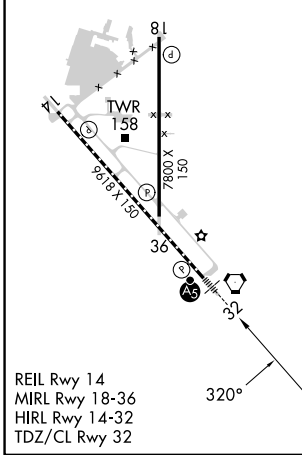
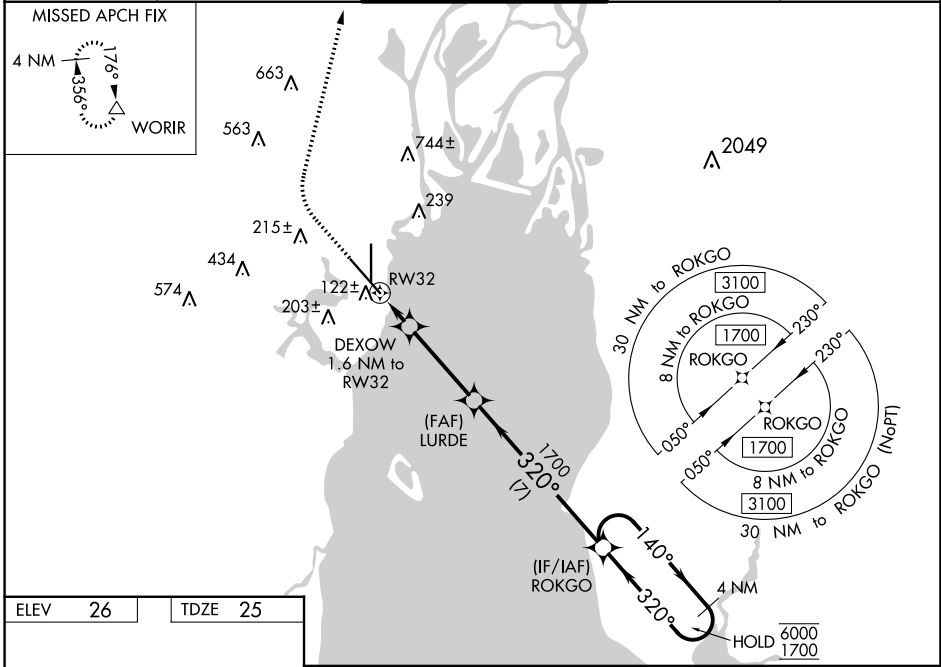
▼ For uncompensated Baro-VNAV systems, LNAV/VNAV NA below -2°C or above 54°C. For inop ALS, increase LNAV/VNAV all Cats visibility to RVR 4000, and LNAV Cats C/D visibility to RVR 5500.

MALS



MISSED APPROACH: Climb to 800 then climbing right turn to 2000 direct WORIR and hold.

ATIS <b>135.575</b>	MOBILE APP CON ★ <b>118.5 269.3</b>	<b>DOWNTOWN TOWER ★</b> <b>118.8 (CTAF) 0 251.1</b>	GND CON <b>121.7 239.3</b>	UNICOM <b>122.95</b>
------------------------	----------------------------------------	--------------------------------------------------------	-------------------------------	-------------------------



CATEGORY	A	B	C	D
LPV DA		225/18	200 (200-1/2)	
LNAV/VNAV DA		283/24	258 (300-1/2)	
LNAV MDA	380/24	355 (400-1/2)	380/30	355 (400-3/4)
CIRCLING	680-1	654 (700-1)	680-1 3/4 654 (700-1 3/4)	1100-3 1074 (1100-3)

SE-4, 18 MAY 2023 to 15 JUN 2023

SE-4, 18 MAY 2023 to 15 JUN 2023