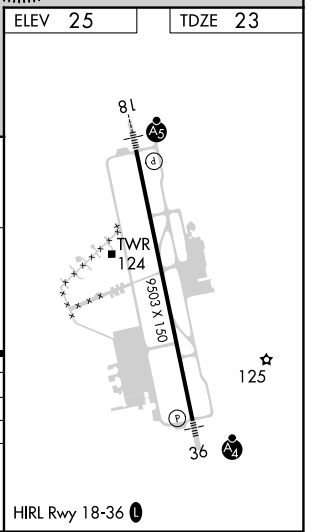
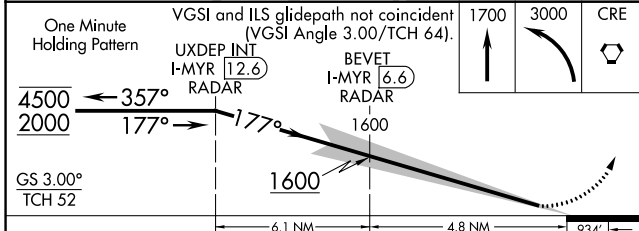
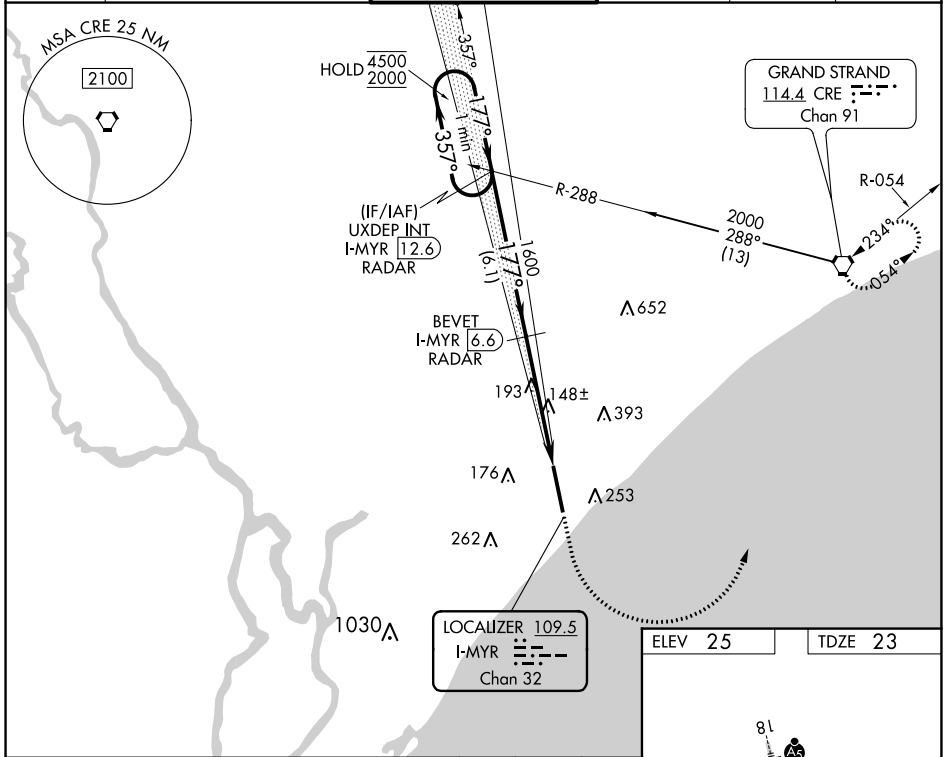


LOC/DME I-MYR 109.5 Chan 32	APP CRS 177°	Rwy Idg TDZE 23 Apt Elev 25	9503
--	------------------------	---	-------------

ILS RWY 18 (SA CAT I & II)

MYRTLE BEACH INTL (MYR)

DME required.		MALSR	MISSED APPROACH: Climb to 1700 then climbing left turn to 3000 direct CRE VORTAC and hold.		
SA CAT I/II: Requires specific OPSPEC, MSPEC, or LOA approval.		AS			
ATIS 123.925	MYRTLE BEACH APP CON * (171° - 321°) 127.4 257.95 (322° - 170°) 119.2 350.3	MYRTLE BEACH TOWER * 128.45 (CTAF) 259.3	GND CON 120.3 275.8	CLNC DEL 120.3	UNICOM 122.95



CATEGORY	A	B	C	D
S-ILS 18		SA CAT I RA 156/14	150 DA 173	
S-ILS 18		SA CAT II RA 101/12	100 DA 123	

SA CATEGORY I & II SPECIAL AIRCREW & AIRCRAFT CERTIFICATION REQUIRED

SE-2, 18 MAY 2023 to 15 JUN 2023

SE-2, 18 MAY 2023 to 15 JUN 2023