

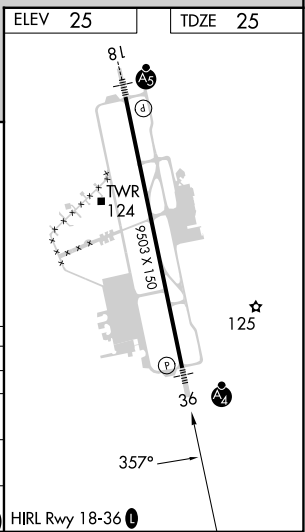
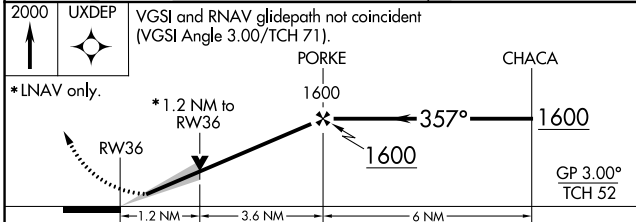
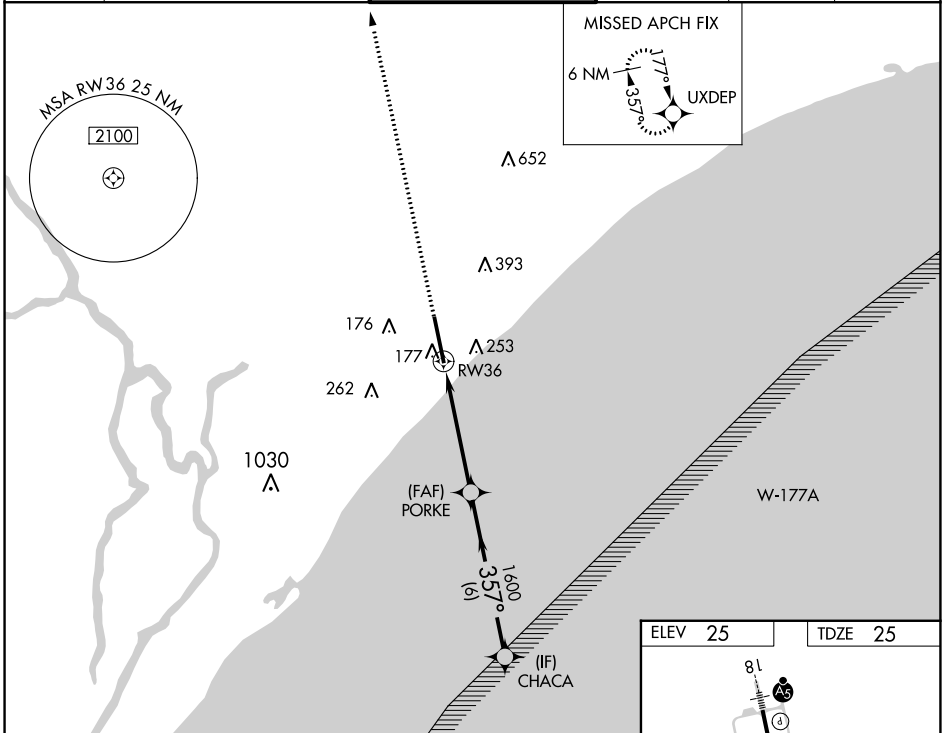
WAAS CH <b>93719</b> <b>W36A</b>	APP CRS <b>357°</b>	Rwy Idg <b>9503</b> TDZE <b>25</b> Apt Elev <b>25</b>
--	------------------------	---

# RNAV (GPS) RWY 36

MYRTLE BEACH INTL (MYR)

RNP APCH.	<p>⚠ For uncompensated Baro-VNAV systems, LNAV/VNAV NA below -15°C or above 54°C.</p> <p>⚠ Inop table does not apply to LPV. For inop ALS, increase LNAV/VNAV Cats D/E visibility to RVR 6000, and LNAV Cats C/D/E visibility to 1 3/8 SM.</p>	MALSF 	MISSED APPROACH: Climb to 2000 direct UXDEP and hold.
-----------	--	-----------	--

ATIS <b>123.925</b>	MYRTLE BEACH APP CON * (171° - 321°) <b>127.4 257.95</b> (322° - 170°) <b>119.2 350.3</b>	MYRTLE BEACH TOWER * <b>128.45</b> (CTAF) <b>0 259.3</b>	GND CON <b>120.3 275.8</b>	CLNC DEL <b>120.3</b>	UNICOM <b>122.95</b>
------------------------	---	---	-------------------------------	--------------------------	-------------------------



CATEGORY	A	B	C	D	E
LPV DA	225/40 200 (200-3/4)				
LNAV/VNAV DA	374/45 349 (400-7/8)				
LNAV MDA	480/40 455 (500-3/4)		480/50 455 (500-1)		
CIRCLING	560-1 535 (600-1)		740-2 715 (800-2)	740-2 1/4 715 (800-2 1/4)	740-2 1/2 715 (800-2 1/2)

SE-2, 18 MAY 2023 to 15 JUN 2023

SE-2, 18 MAY 2023 to 15 JUN 2023