

HI-TACAN Y RWY 28

TACAN NGU Chan 86Y	APCH CRS 290°	Rwy ldg 7375 TDZE 14 Arprt Elev 15
------------------------------	-------------------------	---

AL-290 [USN]

NORFOLK NS (CHAMBERS FIELD) (KNGU)

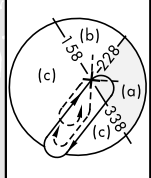
RADAR required. * When ALS inop, increase CAT CDE vis to 1 3/8 miles. ** Circling not authorized S of Rwy 10-28.	SSALF 	MISSED APPROACH: Climb to 2300 on NGU TACAN R-277 then as directed by ATC.		
ATIS 118.425 342.0	APP CON 118.9 273.475	CHAMBERS TOWER 124.3 379.15	GND CON 121.8 370.85	ASR/PAR

CAUTION:
Do not mistake Norfolk Intl 5 NM SE for Chambers Fld. Chambers Fld has a single rwy, Norfolk Intl has int runways.

NORFOLK NS HELIPOINT 1 NM NW
Use caution in circling approach.

FAC 464 ft from rwy CL at 3000 ft from thld.

A 758



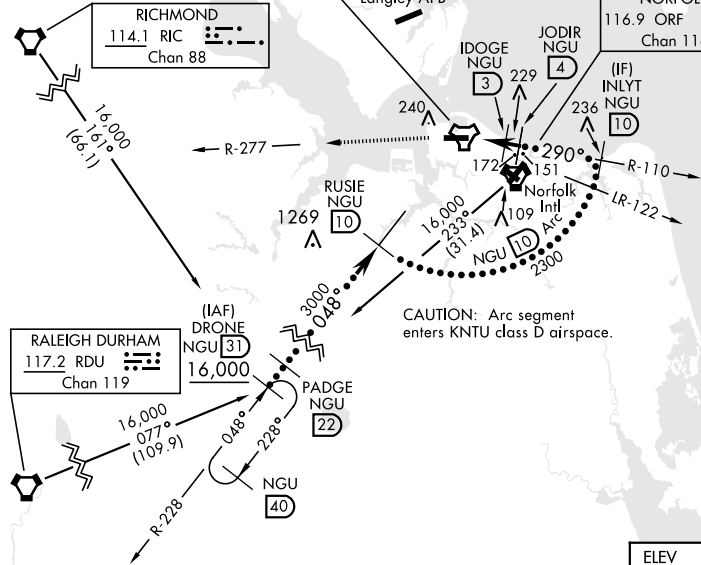
CHAMBERS
Chan 86Y NGU

NORFOLK
116.9 ORF
Chan 116

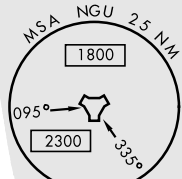
ORF Feeder requires procedure turn.

RICHMOND
114.1 RIC
Chan 88

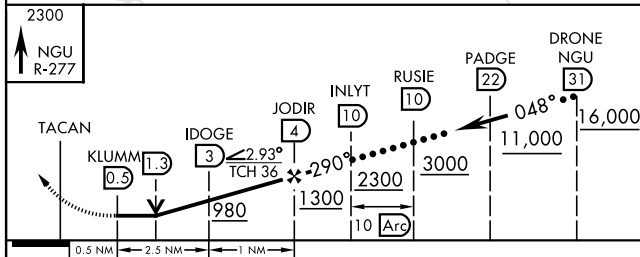
Langley AFB



CAUTION: Arc segment enters KNTU class D airspace.



EMERG SAFE ALT 100 NM 4100



CATEGORY	C	D	E
S-28 *	460-1	446	(500-1)
CIRCLING **	540-1 1/2 525 (600-1 1/2)	580-2	565 (600-2)

ELEV 15	TDZE 14
---------	---------

Rwy 10 ldg 8071'
Rwy 28 ldg 7375'

HIRL Rwy 10-28
REIL Rwy 10-28
TDZL/CL Rwy 10-28

HI-TACAN Y RWY 28

NE-3, 18 MAY 2023 to 15 JUN 2023

NE-3, 18 MAY 2023 to 15 JUN 2023