

# RNAV (GPS) RWY 10

WAAS Chan <b>44826</b> <b>W10A</b>	APCH CRS <b>100°</b>	Rwy Idg <b>8071</b> TDZE <b>14</b> Arpt Elev <b>15</b>
--	-------------------------	--

AL-290 [USN]

NORFOLK NS (CHAMBERS FIELD) (KNGU)

RNP APCH

▼ \*When ALS inop, increase vis to 3/4 mile.  
 \*\*When ALS inop, increase vis to 1 1/8 miles.  
 \*\*\* When ALS inop, increase CAT AB vis to 1 mile, CAT CDE vis to 1 1/2 miles.  
 \*\*\*\* Circling not authorized S of Rwy 10-28.

ALSF-2



MISSED APPROACH: Climb to 800 then climbing left turn to 3000 direct GLEEP and hold.

ATIS  
**118.425 342.0**

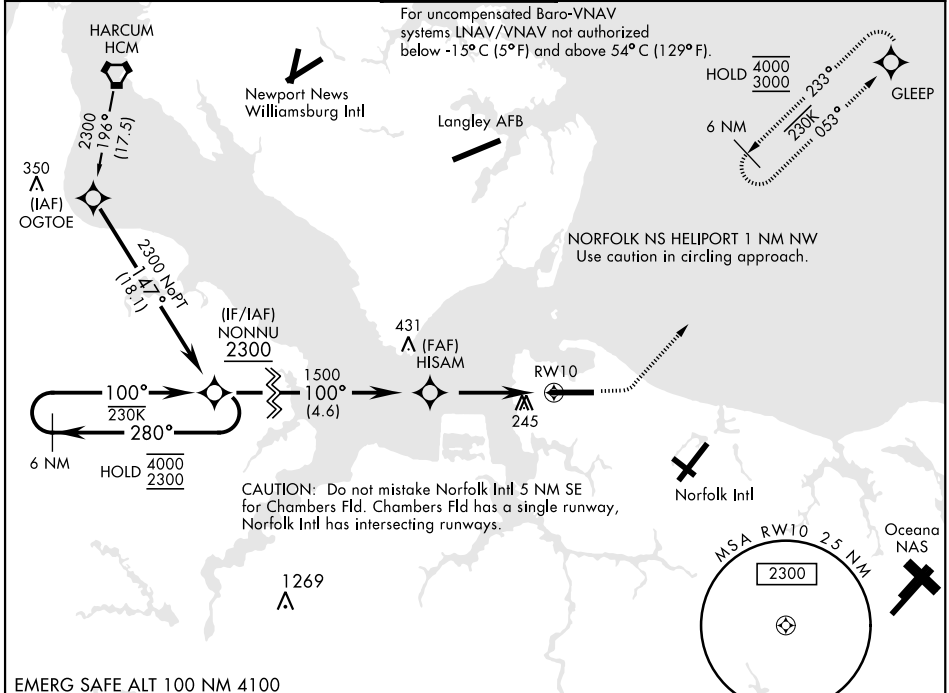
APP CON  
**118.9 273.475**

CHAMBERS TOWER  
**124.3 379.15**

GND CON  
**121.8 370.85**

CLNC DEL  
**120.7 339.8**

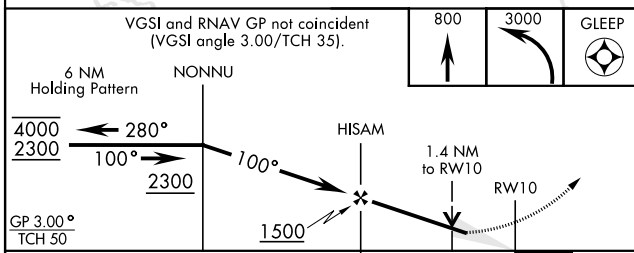
ASR/PAR



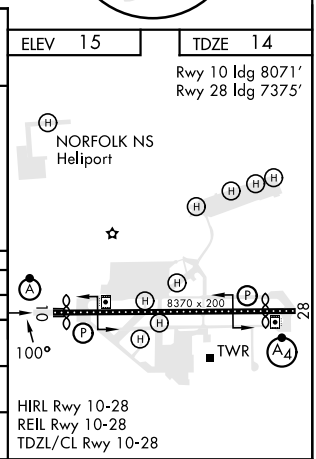
NE-3, 18 MAY 2023 to 15 JUN 2023

NE-3, 18 MAY 2023 to 15 JUN 2023

EMERG SAFE ALT 100 NM 4100



CATEGORY	A	B	C	D	E
LPV DA *	214-1/2		200	(200-1/2)	
LNAV/VNAV DA **	500-1		486	(500-1)	
LNAV MDA ***	500-1/2 486 (500-1/2)		500-1	486	(500-1)
CIRCLING ****	500-1 485 (500-1)	540-1 525 (600-1)	540-1 1/2 525 (600-1 1/2)	580-2 565	(600-2)



# RNAV (GPS) RWY 10