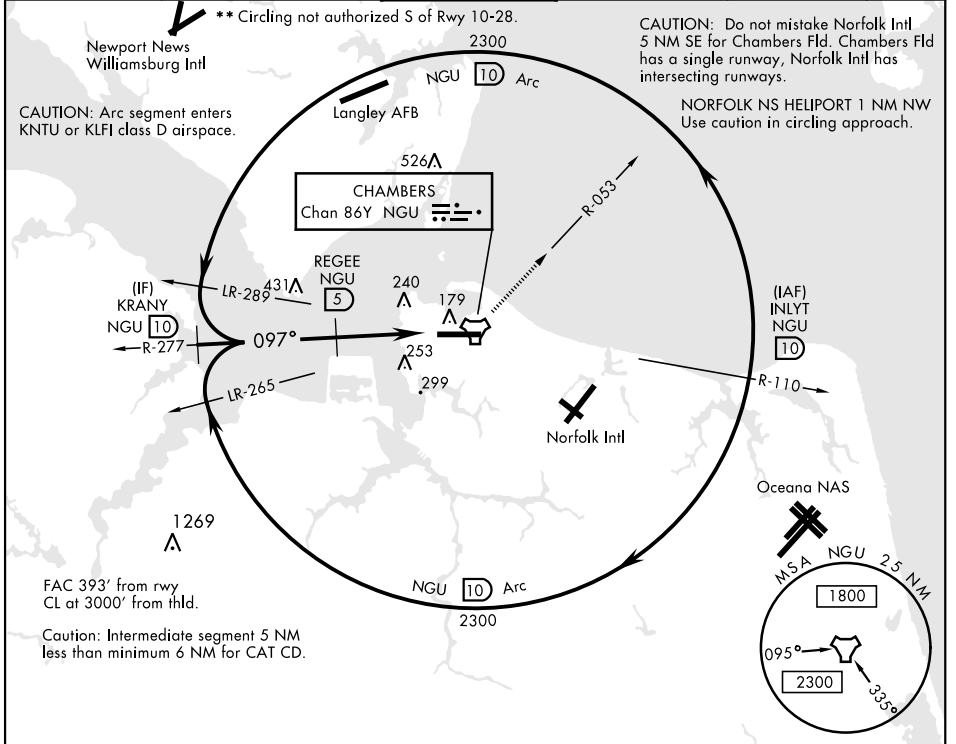


TACAN Z RWY 10

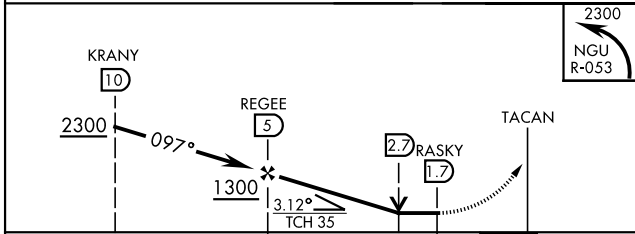
TACAN NGU Chan 86Y	APCH CRS 097°	Rwy ldg 8071 TDZE Arpt Elev 15	AL-290 [USN]	NORFOLK NS (CHAMBERS FIELD) (KNGU)
------------------------------	-------------------------	--	--------------	------------------------------------

RADAR required	ALSIF-2	MISSED APPROACH: Climbing left turn to 2300 on NGU TACAN R-053 then as directed by ATC.
<p>▼ * When ALS inop, increase CAT AB vis to 1 mile, CAT CD vis to 1 1/8 miles.</p>		

ATIS 118.425 342.0	APP CON 118.9 273.475	CHAMBERS TOWER 124.3 379.15	GND CON 121.8 370.85	CLNC DEL 120.7 339.8	ASR/PAR
------------------------------	---------------------------------	---------------------------------------	--------------------------------	--------------------------------	---------



EMERG SAFE ALT 100 NM 4100



ELEV 15	TDZE 14
----------------	----------------

Rwy 10 ldg 8071'
Rwy 28 ldg 7375'

HIRL Rwy 10-28
REIL Rwy 10-28
TDZL/CL Rwy 10-28

CATEGORY	A	B	C	D
S-10*	520-1/2	506 (600-1/2)	520-1	506 (600-1)
CIRCLING**	520-1 505 (600-1)	540-1 525 (600-1)	540-1/2 525 (600-1/2)	580-2 565 (600-2)

TACAN Z RWY 10

NE-3, 18 MAY 2023 to 15 JUN 2023

NE-3, 18 MAY 2023 to 15 JUN 2023