

# TACAN Z RWY 28

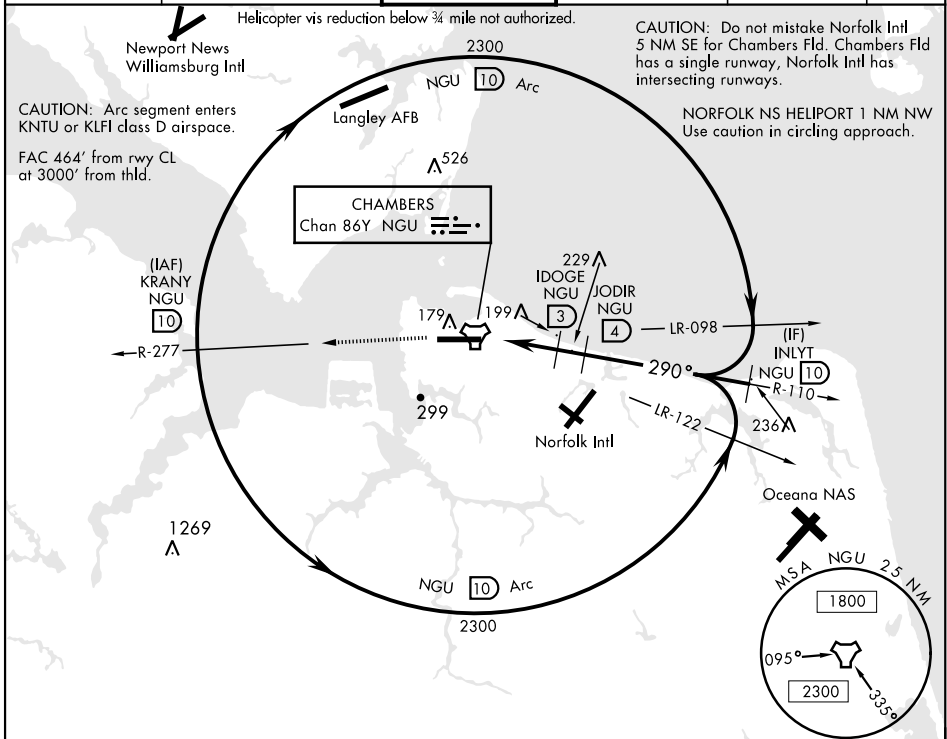
TACAN NGU Chan <b>86Y</b>	APCH CRS <b>290°</b>	Rwy ldg <b>7375'</b> TDZE <b>14</b> Arpt Elev <b>15</b>
------------------------------	-------------------------	---

AL-290 [USN]

NORFOLK NS (CHAMBERS FIELD) (KNGU)

RADAR required.		SSALF 	MISSED APPROACH: Climb to 2300 on NGU TACAN R-277 then as directed by ATC.
* When ALS inop, increase CAT AB vis to 1 mile, CAT CD vis to 1 3/8 miles. ** Circling not authorized S of Rwy 10-28.			

ATIS <b>118.425 342.0</b>	APP CON <b>118.9 273.475</b>	CHAMBERS TOWER <b>124.3 379.15</b>	GND CON <b>121.8 370.85</b>	CLNC DEL <b>120.7 339.8</b>	ASR/PAR
------------------------------	---------------------------------	---------------------------------------	--------------------------------	--------------------------------	---------



EMERG SAFE ALT 100 NM 4100

2300 ↑ NGU R-277	TACAN	KLUMM 0.5	IDOGE 3	JODIR 4	INLYT 10
	0.5 NM	2.5 NM	1 NM		
		980	1300	2300	
		2.93°			
		TCH 36			
CATEGORY	A	B	C	D	
S-28 *	460-3/4	446 (500-3/4)	460-1	446 (500-1)	
CIRCLING **	480-1 465 (500-1)	540-1 525 (600-1)	540-1 1/2 525 (600-1 1/2)	580-2 565 (600-2)	

ELEV 15	TDZE 14
---------	---------

Rwy 10 ldg 8071'  
Rwy 28 ldg 7375'

NORFOLK NS Heliport

TWR

8370 x 208

290°

HIRL Rwy 10-28  
REIL Rwy 10-28  
TDZL/CL Rwy 10-28

# TACAN Z RWY 28

NE-3, 18 MAY 2023 to 15 JUN 2023

NE-3, 18 MAY 2023 to 15 JUN 2023