

WAAS CH <b>45804</b> <b>W07A</b>	APP CRS <b>069°</b>	Rwy ldg <b>6830</b> TDZE <b>1744</b> Apt Elev <b>1744</b>
--	------------------------	---

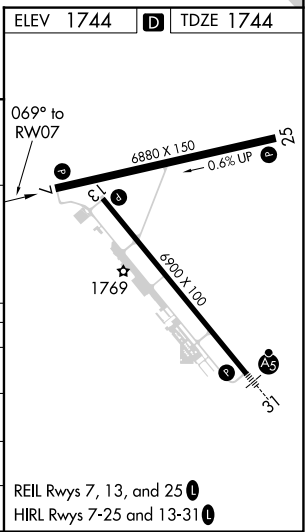
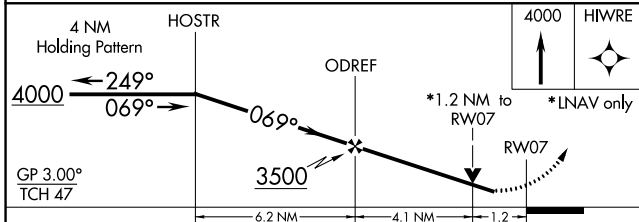
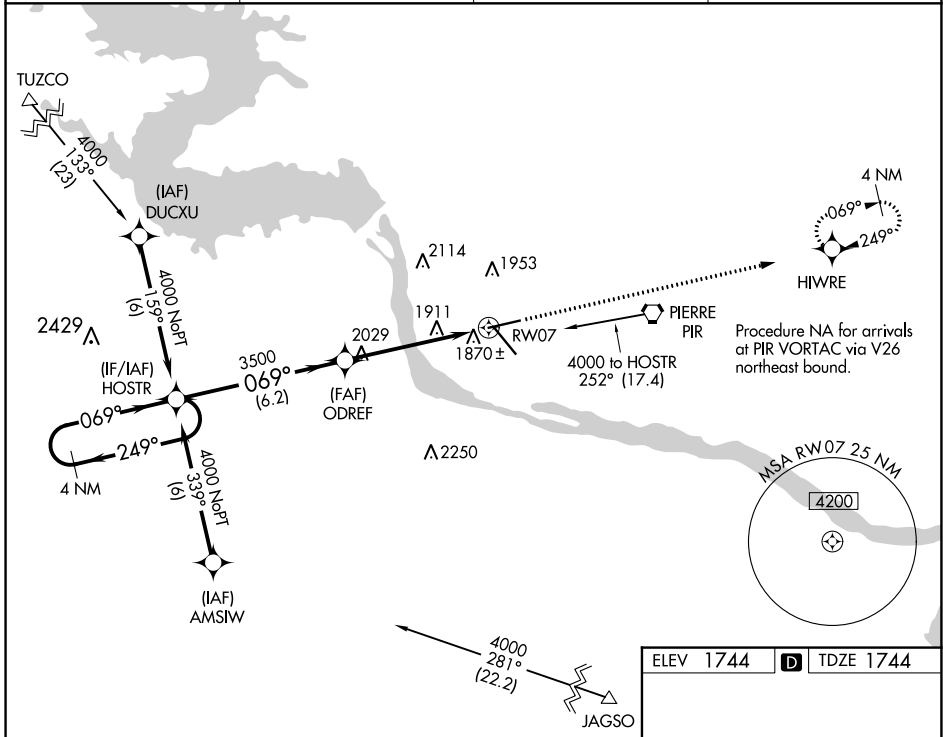
# RNAV (GPS) RWY 7

PIERRE RGNL (PIR)

**⚠** For uncompensated Baro-VNAV systems, LNAV/VNAV NA below -18°C (0°F) or above 45°C (113°F). DME/DME RNP-0.3 NA. Visibility reduction by helicopters NA.

MISSED APPROACH: Climb to 4000 direct HIWRE and hold.

ASOS <b>119.025</b>	MINNEAPOLIS CENTER <b>125.1 269.1</b>	CTAF <b>122.7</b>	UNICOM <b>122.95</b>
------------------------	--	----------------------	-------------------------



CATEGORY	A	B	C	D
LPV DA	2057-1 313 (400-1)			
LNAV/VNAV DA	2170-1½ 426 (500-1½)			
LNAV MDA	2180-1	436 (500-1)	2180-1¼ 436 (500-1¼)	2180-1½ 436 (500-1½)
<b>C</b> CIRCLING	2240-1 496 (500-1)	2300-1 556 (600-1)	2400-1¾ 656 (700-1¾)	2460-2¼ 716 (800-2¼)

NC-1, 18 MAY 2023 to 15 JUN 2023

NC-1, 18 MAY 2023 to 15 JUN 2023