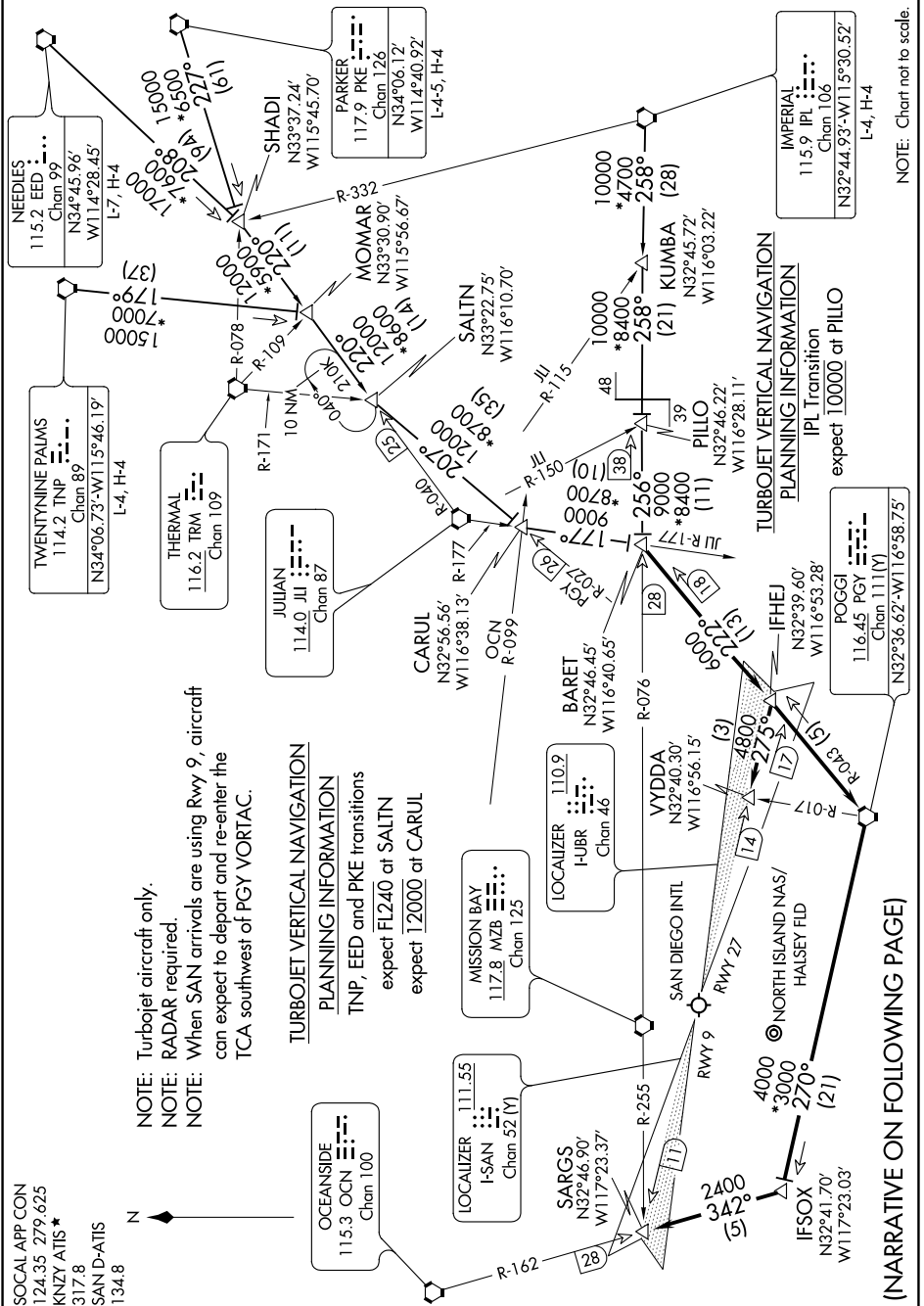


BARET FIVE ARRIVAL

SW-3, 18 MAY 2023 to 15 JUN 2023



NOTE: Turbojet aircraft only.
 NOTE: RADAR required.
 NOTE: When SAN arrivals are using Rwy 9, aircraft can expect to depart and re-enter the TCA southwest of PGY VORTAC.

TURBOJET VERTICAL NAVIGATION
PLANNING INFORMATION
 TNP, EED and PKE transitions
 expect FL240 at SALTIN
 expect 12000 at CARUL

TURBOJET VERTICAL NAVIGATION
PLANNING INFORMATION
 IPL Transition
 expect 10000 at PILLO

(NARRATIVE ON FOLLOWING PAGE)

NOTE: Chart not to scale.

SW-3, 18 MAY 2023 to 15 JUN 2023

BARET FIVE ARRIVAL