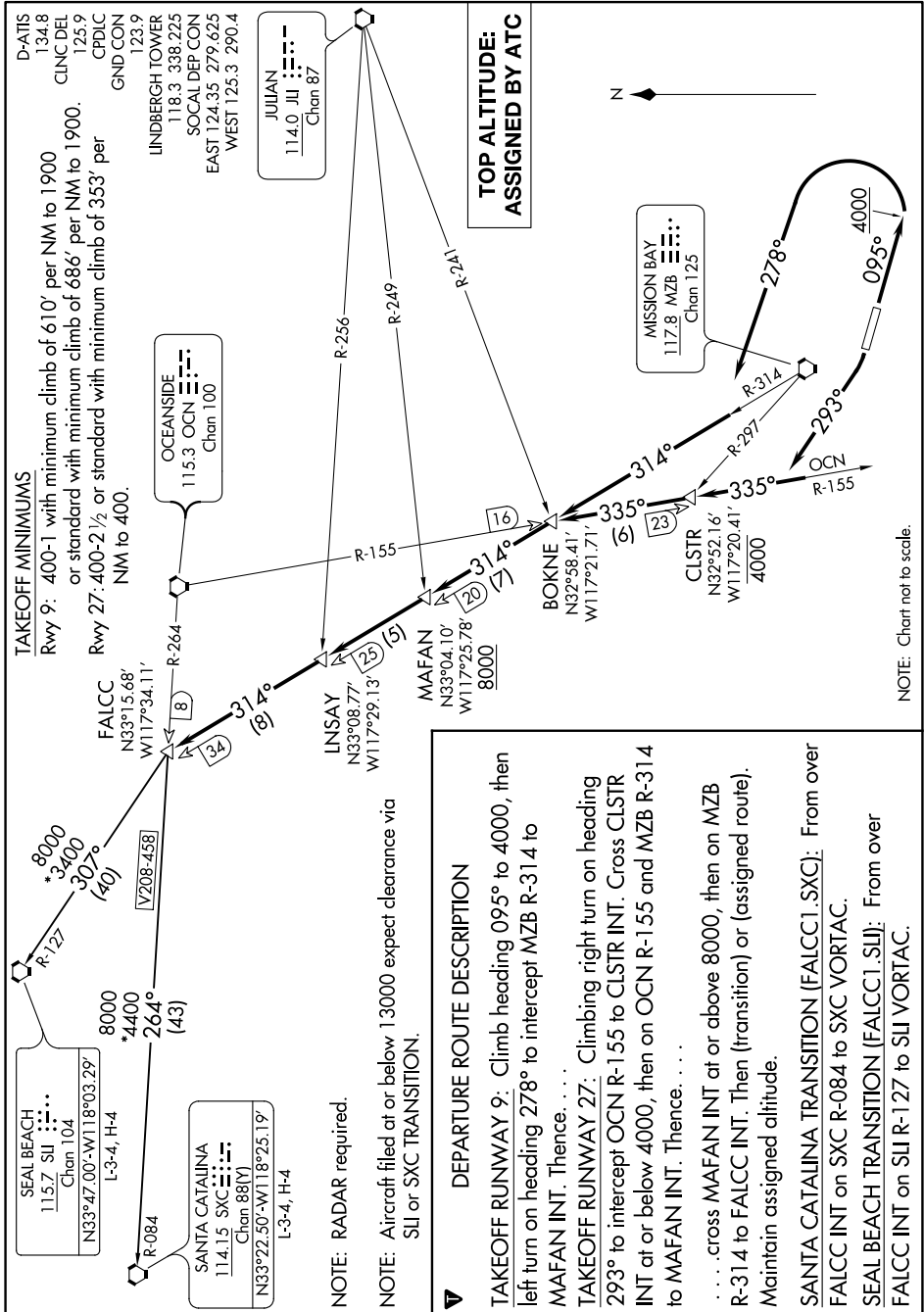


# FALCC ONE DEPARTURE

AL-373 (FAA)

SAN DIEGO INTL (SAN)  
SAN DIEGO, CALIFORNIA

SW-3, 18 MAY 2023 to 15 JUN 2023



NOTE: RADAR required.

NOTE: Aircraft filed at or below 13000 expect clearance via SUI or SXC TRANSITION.

## DEPARTURE ROUTE DESCRIPTION

**TAKEOFF RUNWAY 9:** Climb heading 095° to 4000, then left turn on heading 278° to intercept MZB R-314 to MAFAN INT. Thence. . . .

**TAKEOFF RUNWAY 27:** Climbing right turn on heading 293° to intercept OCN R-155 to CLSTR INT. Cross CLSTR INT at or below 4000, then on OCN R-155 and MZB R-314 to MAFAN INT. Thence. . . .

. . . . cross MAFAN INT at or above 8000, then on MZB R-314 to FALCC INT. Then (transition) or (assigned route). Maintain assigned altitude.

**SANTA CATALINA TRANSITION (FALCC1.SXC):** From over FALCC INT on SXC R-084 to SXC VORTAC.

**SEAL BEACH TRANSITION (FALCC1.SLI):** From over FALCC INT on SLI R-127 to SLI VORTAC.

NOTE: Chart not to scale.

SW-3, 18 MAY 2023 to 15 JUN 2023

# FALCC ONE DEPARTURE