

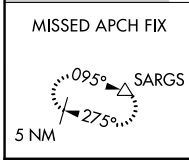
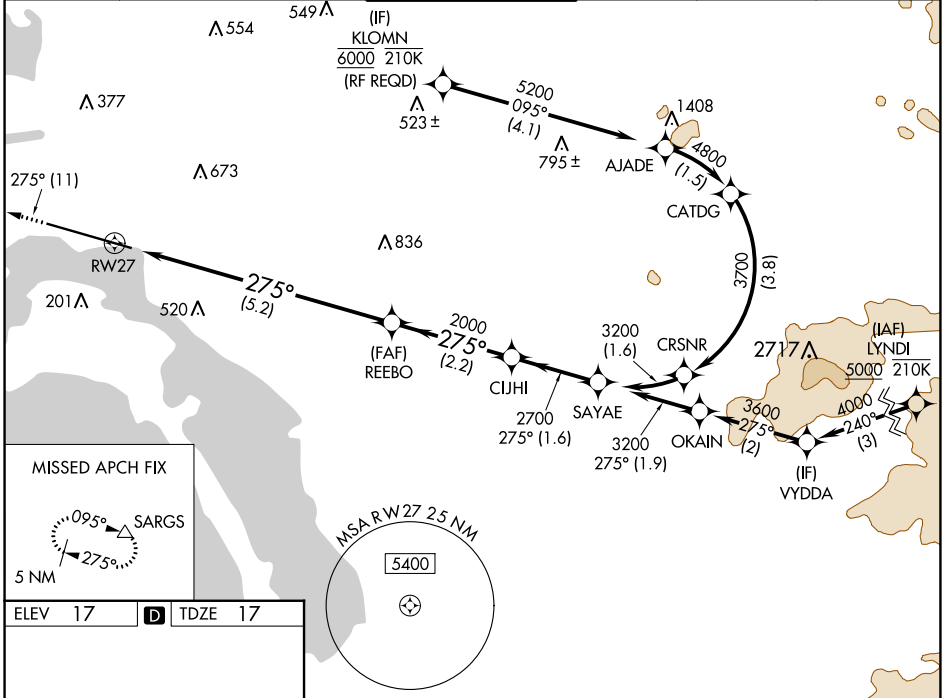
APP CRS <b>275°</b>	Rwy Idg TDZE Apt Elev	<b>7591</b> <b>17</b> <b>17</b>
------------------------	-----------------------------	---------------------------------------

# RNAV (RNP) Z RWY 27

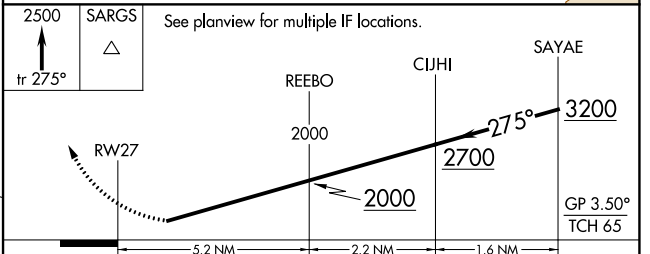
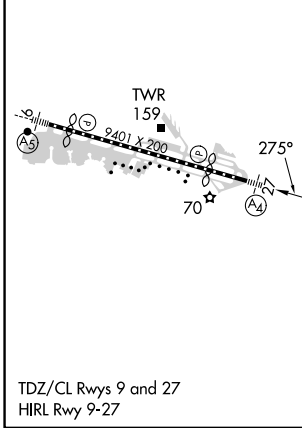
SAN DIEGO INTL (SAN)

RNP AR APCH.	MALS	MISSED APPROACH: Climb to 2500 on track 275° to SARGs and hold.
▼ For uncompensated Baro-VNAV systems, procedure NA below 6°C or above 46°C. Straight-in Rwy 27 at night, operational VGSI required, remain on or above VGSI glidepath until threshold. For inop ALS, increase RNP 0.30 all Cats visibility to 2½ SM.	(A4)	

D-ATIS <b>134.8</b>	SOCAL APP CON <b>119.6 363.1 (WEST)</b> <b>124.35 279.625 (EAST)</b>	LINDBERGH TOWER <b>118.3 338.225</b>	GND CON <b>123.9</b>	CLNC DEL <b>125.9</b>	CPDLC
------------------------	--	---	-------------------------	--------------------------	-------



ELEV 17	<b>D</b>	TDZE 17
---------	----------	---------



CATEGORY	A	B	C	D
RNP 0.11 DA		617-1½	600 (600-1½)	
RNP 0.30 DA		778-2	761 (800-2)	

TDZ/CL Rwy 9 and 27  
HIRL Rwy 9-27

**AUTHORIZATION REQUIRED**

SW-3, 18 MAY 2023 to 15 JUN 2023

SW-3, 18 MAY 2023 to 15 JUN 2023