

SUMTER, SOUTH CAROLINA

HI-ILS or LOC Z RWY 22R

LOC I-JWU 108.7	APCH CRS 223°	22R	22L
		Rwy ldg	10,014 8014
		TDZE	240 235
		Arprt Elev	241 241

JAL-409 [USAF]

SHAW AFB (KSSC)

RADAR or DME Required.

▲ * When ALS inop, increase RVR to 40 and vis to ¼ mile.
 ** When ALS inop, increase vis to 1 ¼ miles.



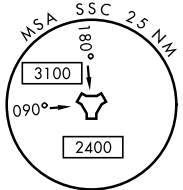
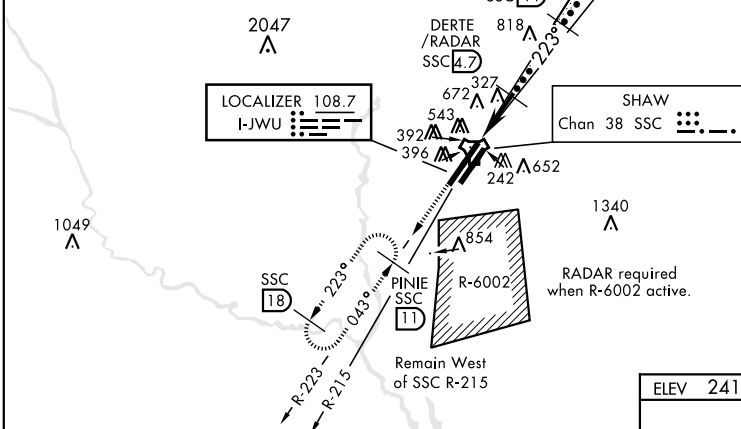
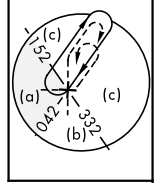
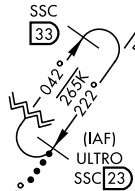
MISSED APPROACH: Climbing to 2000, intercept SSC TACAN R-223 to PINIE and hold.

ATIS ★ 132.125 270.1	SHAW APP CON 125.4 318.1	SHAW TOWER ★ 126.65 254.25	GND CON 126.1 275.8	CLNC DEL 126.1 275.8
--------------------------------	------------------------------------	--------------------------------------	-------------------------------	--------------------------------

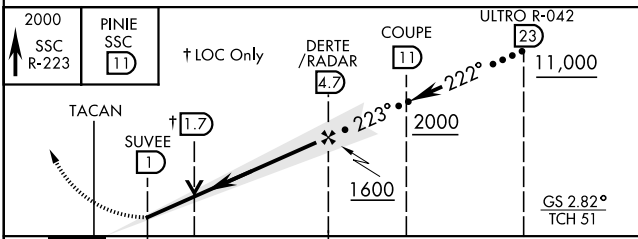
Sidestep Rwy 22L: Terrain 239' MSL, 200' prior to threshold, 200' right of course. When VGSI inop, sidestep procedure NA at night.

CAUTION: When Rwy 4L VGSI inop, circling to Rwy 04L, 22L NA at night. Terrain 239' MSL, 200' prior to threshold, 200' left of centerline.

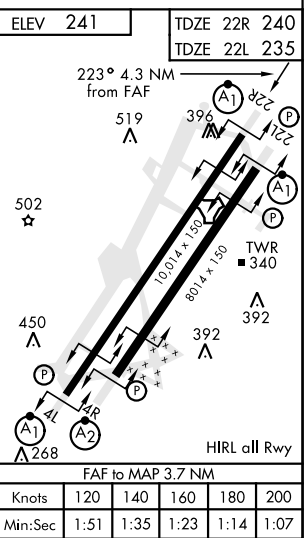
USAF ONLY: When VGSI inop, circling and sidestep to Rwy 22L authorized at night with approval from MAJCOM Director of Ops or equivalent.



EMERG SAFE ALT 100 NM 3800



CATEGORY	C		D		E	
	6 NM	3.7 NM				
S-ILS 22R *	440/24	200	(200-½)			
S-LOC 22R**	660/40	420	(500-¾)			
SIDESTEP ** 22L	660-1 ¼	425	(500-1 ¼)			
CIRCLING	1000-2 ¼ 759 (800-2 ¼)	1000-2 ½ 759 (800-2 ½)	1000-2 ¾ 759 (800-2 ¾)			



SUMTER, SOUTH CAROLINA
Amdt 1 10OCT19

33°58'N-80°28'W

SHAW AFB (KSSC)

HI-ILS or LOC Z RWY 22R

SE-2, 18 MAY 2023 to 15 JUN 2023

SE-2, 18 MAY 2023 to 15 JUN 2023