

# HI-ILS or LOC Z RWY 4L

LOC I-SSC <b>110.1</b>	APCH CRS <b>043°</b>	Rwy Idg TDZE Arprt Elev	4L <b>10,014</b> <b>240</b> <b>241</b>	4R <b>8014</b> <b>236</b> <b>241</b>	JAL-409 [USAF]	SHAW AFB (KSSC)
---------------------------	-------------------------	-------------------------------	---	---	----------------	-----------------

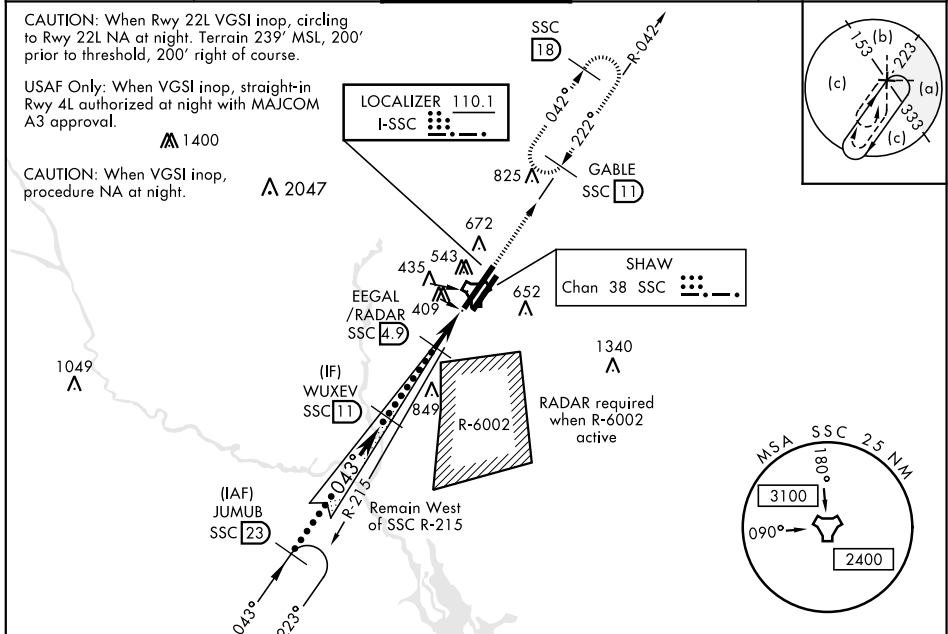
RADAR or DME Required.

\* When ALS inop, increase vis to 1 5/8 miles.

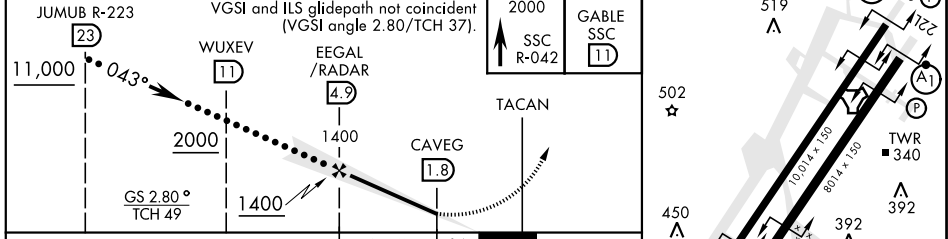
ALSF-1

MISSED APPROACH: Climbing to 2000, intercept SSC TACAN R-042 to GABLE and hold.

ATIS ★ <b>132.125 270.1</b>	SHAW APP CON <b>125.4 318.1</b>	SHAW TOWER ★ <b>126.65 254.25</b>	GND CON <b>126.1 275.8</b>	CLNC DEL <b>126.1 275.8</b>
--------------------------------	------------------------------------	--------------------------------------	-------------------------------	--------------------------------



ELEV 241	TDZE 4L 240	TDZE 4R 236
EMERG SAFE ALT 100 NM 3800		



CATEGORY	C	D	E
S-ILS 4L *	490/50	250	(300-1)
S-LOC 4L *	780/55	540	(600-1)
SIDESTEP * 4R	780-1 3/8	544	(600-1 3/8)
CIRCLING	1000-2 1/4	1000-2 1/2	1000-2 3/4
	759 (800-2 1/4)	759 (800-2 1/2)	759 (800-2 3/4)

FAF to MAP 3.1 NM					
Knots	120	140	160	180	200
Min:Sec	1:33	1:20	1:10	1:02	0:56

# HI-ILS or LOC Z RWY 4L

SE-2, 18 MAY 2023 to 15 JUN 2023

SE-2, 18 MAY 2023 to 15 JUN 2023

