

HI-TACAN Z RWY 22R

TACAN SSC Chan 38	APCH CRS 222°	22R Rwy ldg 10,014 TDZE 240 Arpr Elev 241	22L 8014 235 241
-----------------------------	-------------------------	---	--

JAL-409 [USAF]

SHAW AFB (KSSC)

V * When ALS inop, increase vis to 1½ miles.
 ** When ALS inop, increase vis to 1¾ miles.

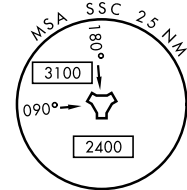
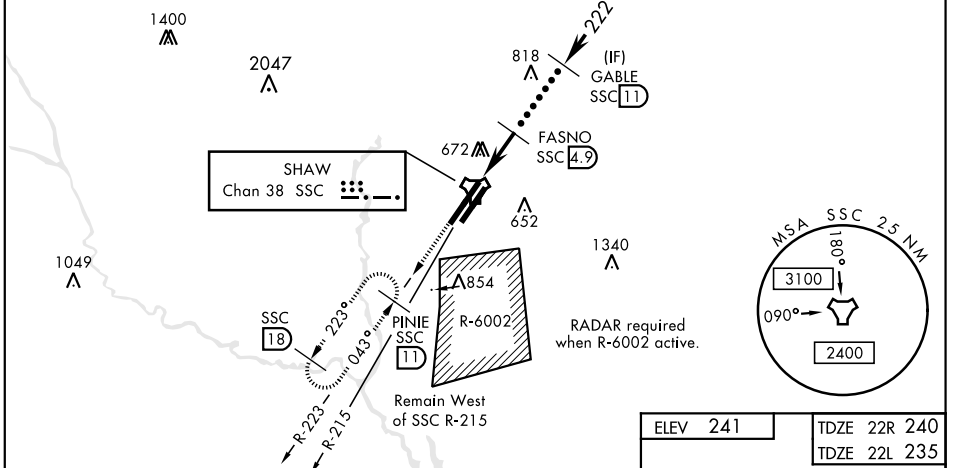
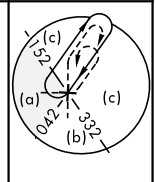


MISSED APPROACH: Climbing to 2000, intercept SSC TACAN R-223 to PINIE and hold.

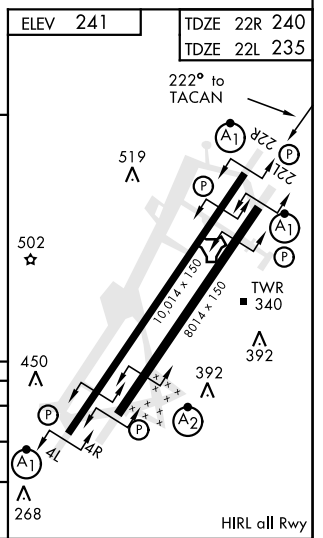
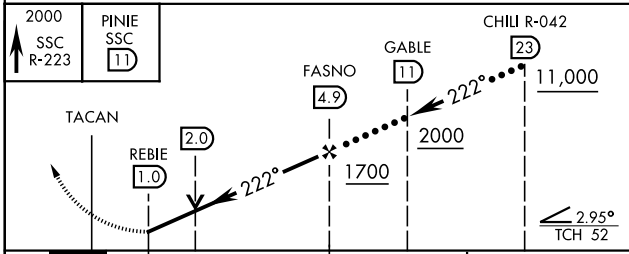
ATIS ★ 132.125 270.1	SHAW APP CON 125.4 318.1	SHAW TOWER ★ 126.65 254.25	GND CON 126.1 275.8	CLNC DEL 126.1 275.8
--------------------------------	------------------------------------	--------------------------------------	-------------------------------	--------------------------------

USAF Only: When Rwy 4L VGSi inop, circling to Rwy 4L at night requires approval from MAJCOM director of Ops or equivalent. Terrain 242' MSL, 200' prior to threshold.

USAF Only: When VGSi inop, sidestep to Rwy 22L, circling to Rwy 22L at night requires approval from MAJCOM Director of Ops or equivalent. Terrain 239' MSL, 200' prior to threshold, 200' right of course.



EMERG SAFE ALT 100 NM 3800



CATEGORY	C	D	E
S-22R*	760/55	520 (600-1)	
SIDESTEP 22L**	760/55	505 (600-1)	
CIRCLING	1000-2¼ 759 (800-2¼)	1000-2½ 759 (800-2½)	1000-2¾ 759 (800-2¾)

HI-TACAN Z RWY 22R

SE-2, 18 MAY 2023 to 15 JUN 2023

SE-2, 18 MAY 2023 to 15 JUN 2023