

HI-ILS or LOC Z RWY 12

LOC I-AFB 109.3	APCH CRS 125°	Rwy Idg 13,645 TDZE 2615 Arpt Elev 2704
---------------------------	-------------------------	--

AL-429 [USAF]

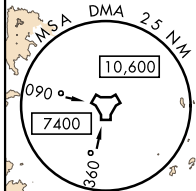
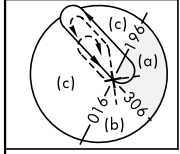
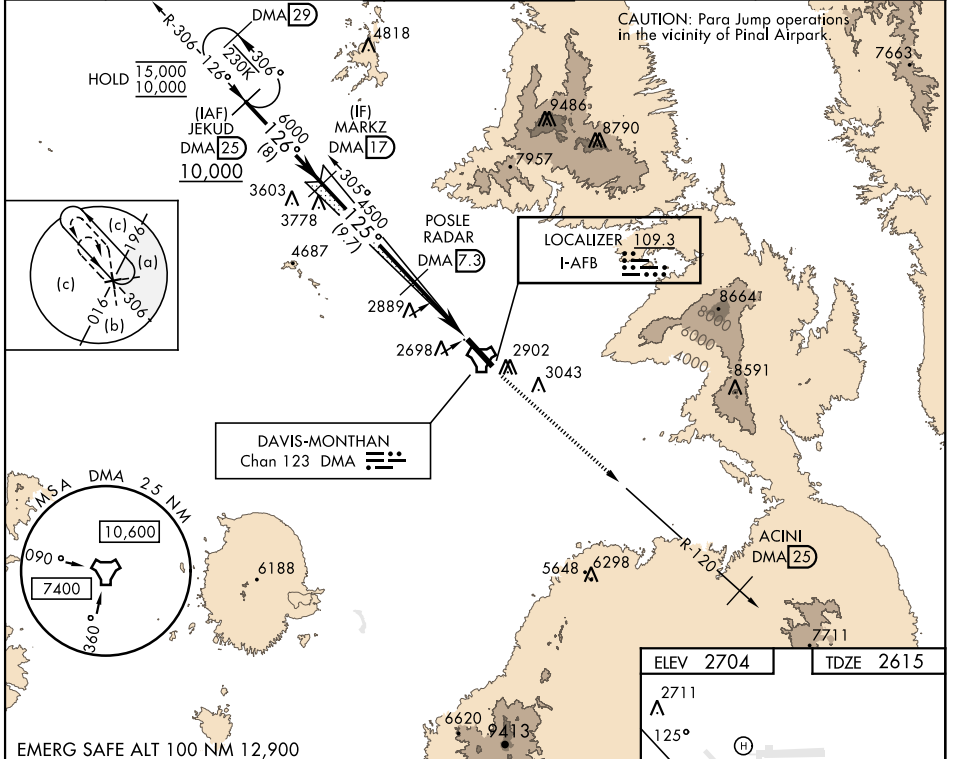
DAVIS-MONTHAN AFB (KDMA)

DME or RADAR required.

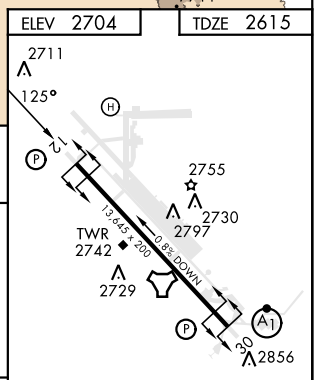
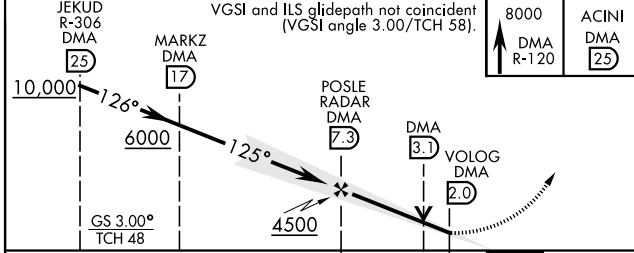
*** Circling not authorized S of Rwy 12-30.**

MISSED APPROACH: Climbing to 8000 intercept DMA TACAN R-120 to ACINI. Expect RADAR vectors.

ATIS* 270.1	TUCSON APP CON 066°-274° 119.4 318.1 275°-065° 125.1 269.55	TOWER 118.85 253.5	GND CON 121.8 275.8	CLNC DEL 121.8 275.8
-----------------------	---	------------------------------	-------------------------------	--------------------------------



EMERG SAFE ALT 100 NM 12,900



CATEGORY	C	D	E	REIL Rwy 12 HIRL Rwy 12-30
	S-ILS 12	2815/40 200 (200-¾)		
S-LOC 12	3160-1½	545 (500-1½)		
CIRCLING*	3280-1⅞ 576 (600-1⅞)	3420-2¼ 716 (800-2¼)	3460-2¾ 756 (800-2¾)	FAF to MAP 5.3 NM
				Knots 120 140 160 180 200 Min:Sec 2:39 2:16 1:59 1:46 1:35

HI-ILS or LOC Z RWY 12

SW-4, 18 MAY 2023 to 15 JUN 2023

SW-4, 18 MAY 2023 to 15 JUN 2023