

HI-TACAN Z RWY 12

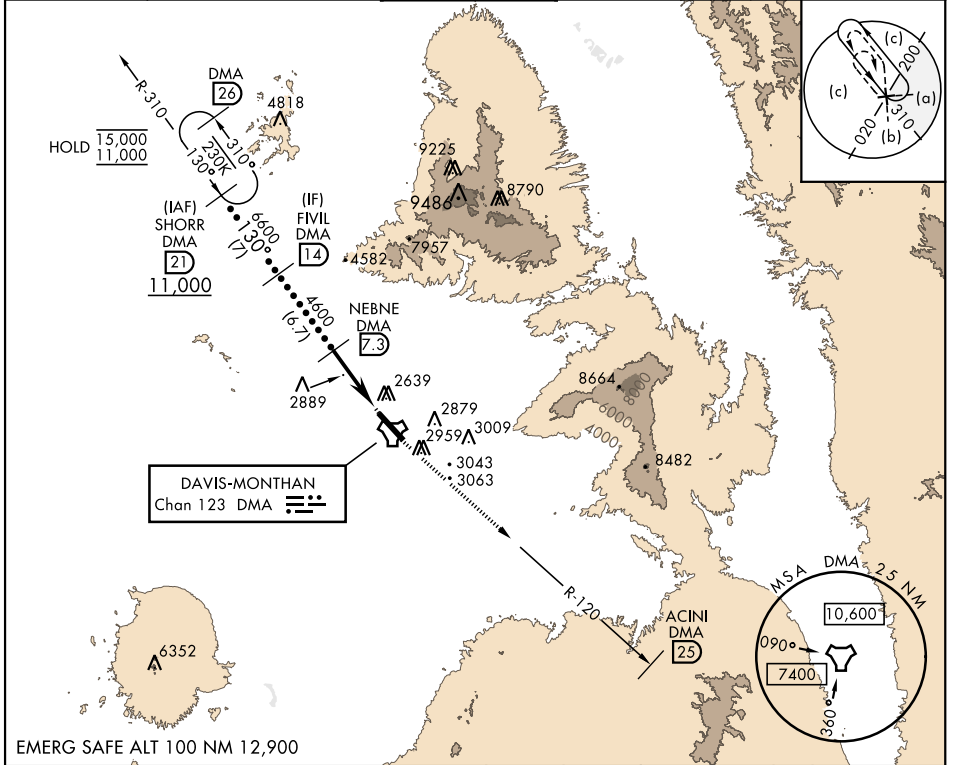
TACAN DMA Chan 123	APCH CRS 130°	Rwy Idg 13,645 TDZE 2615 Arpt Elev 2704
------------------------------	-------------------------	--

AL-429 [USAF]

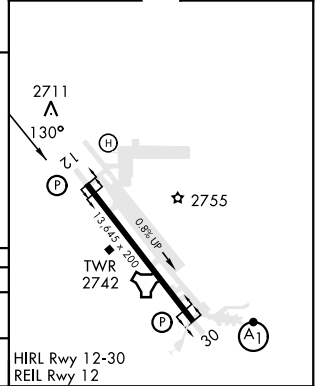
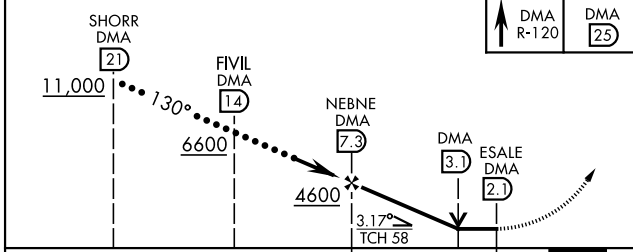
DAVIS-MONTHAN AFB (KDMA)

RADAR required * Circling not authorized S of Rwy 12-30.	MISSED APPROACH: Climbing to 8000 intercept DMA TACAN R-120 to ACINI. Expect RADAR vectors.
---	---

ATIS* 270.1	TUCSON APP CON 125.1 269.55 (090° - 285°) 119.4 318.1 (286° - 089°)	TOWER 118.85 253.5	GND CON 121.8 275.8	CLNC DEL 121.8 275.8
-----------------------	---	------------------------------	-------------------------------	--------------------------------



EMERG SAFE ALT 100 NM 12,900	8000 DMA R-120	ACINI DMA (25)	ELEV 2704	TDZE 2615
------------------------------	-------------------	----------------	-----------	-----------



CATEGORY	C	D	E
S-12	3160-1½	545 (500-1½)	
CIRCLING*	3280-1½ 576 (600-1½)	3420-2¼ 716 (800-2¼)	3460-2¾ 756 (800-2¾)

HI-TACAN Z RWY 12

SW-4, 18 MAY 2023 to 15 JUN 2023

SW-4, 18 MAY 2023 to 15 JUN 2023