

TUCSON, ARIZONA

ILS or LOC Y RWY 12

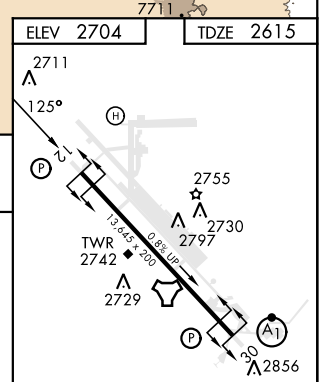
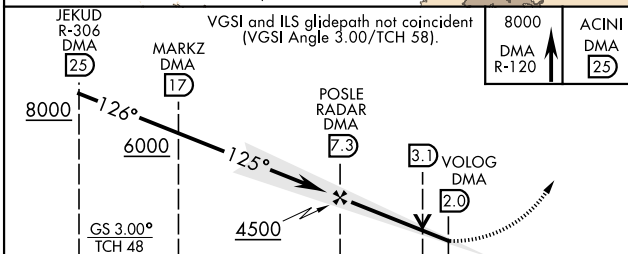
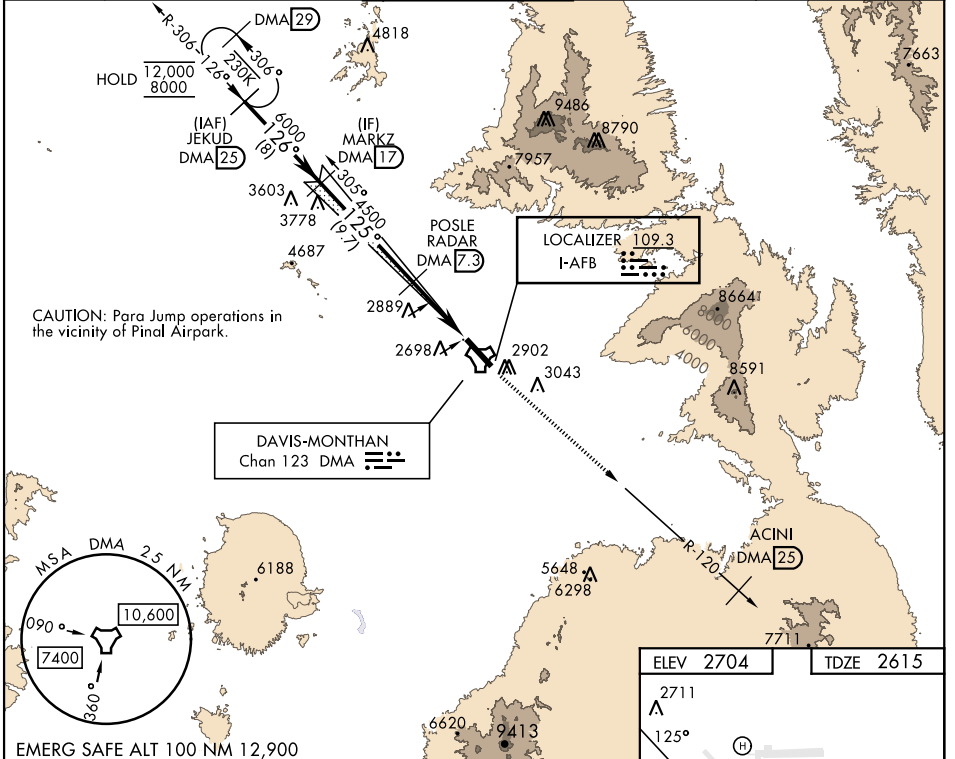
LOC I- AFB 109.3	APCH CRS 125°	Rwy Ldg 13,645 TDZE 2615 Arpt Elev 2704
-----------------------------------	-------------------------	---

AL-429 [USAF]

DAVIS-MONTHAN AFB (KDMA)

DME or RADAR required.	MISSED APPROACH: Climbing to 8000 intercept DMA TACAN R-120 to ACINI. Expect RADAR vectors.
* Circling not authorized S of Rwy 12-30.	

ATIS★ 270.1	TUCSON APP CON 066°-274° 119.4 318.1 275°-065° 125.1 269.55	TOWER 118.85 253.5	GND CON 121.8 275.8	CLNC DEL 121.8 275.8
-----------------------	---	------------------------------	-------------------------------	--------------------------------



CATEGORY	A	B	C	D	E	REIL Rwy 12 HIRL Rwy 12-30 FAF to MAP 5.3 NM	
S-ILS 12	2815/40 200 (200-¾)						Knots 60 90 120 150 180 Min:Sec 5:18 3:32 2:39 2:07 1:46
S-LOC 12	3160/55 545 (500-1)	3160-1½ 545 (500-1½)					
CIRCLING*	3200-1 496 (500-1)	3280-1½ 576 (600-1½)	3420-2¼ 716 (800-2¼)	3460-2¾ 756 (800-2¾)			

TUCSON, ARIZONA
Amdt 2 20APR23

32°10'N-110°53'W

DAVIS-MONTHAN AFB (KDMA)

ILS or LOC Y RWY 12

SW-4, 18 MAY 2023 to 15 JUN 2023

SW-4, 18 MAY 2023 to 15 JUN 2023