

TUCSON, ARIZONA

RNAV (GPS) RWY 12

WAAS CH 44576 W12A	APCH CRS 125°	Rwy ldg TDZE Arpt Elev	13,645 2615 2704
--------------------------	------------------	------------------------------	------------------------

AL-429 (USAF)

DAVIS MONTHAN AFB (KDMA)

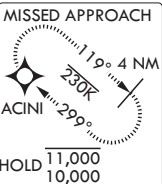
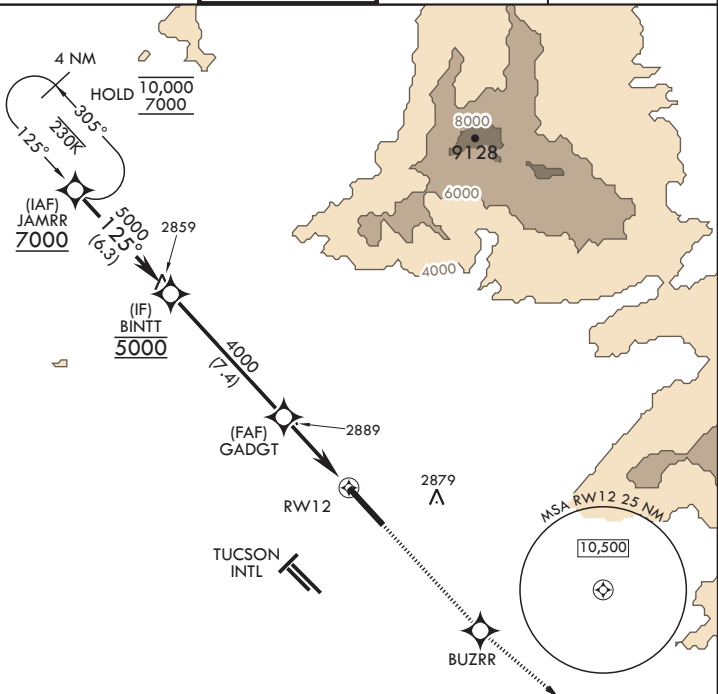
RNP APCH	MISSED APPROACH: Climb to 10,000 direct BUZZR, track 118° to ACINI and hold, continue climb-in-hold to 10,000.
RADAR required	
* Circling NA SW of Rwy 12-30.	

ATIS* 270.1	TUCSON APP CON/DEP CON 119.4 269.55	TOWER 118.85 253.5	GND CON 121.8 275.8	CLNC DEL 121.8 275.8
----------------	--	-----------------------	------------------------	-------------------------

For uncompensated Baro-VNAV systems, LNAV/VNAV NA below 5°C or above 54°C.

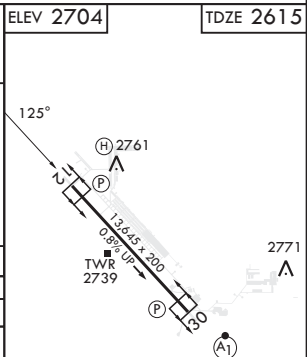
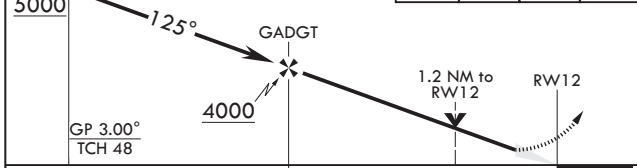
Average Cold Temperature based on Standard -30.00°C ISA deviation.

CAUTION: Para Jump operations in the vicinity of Pinal Airpark.



EMERG SAFE ALT 100 NM 12,900

BINTT	VGSI and RNAV glidepath not coincident (VGSI Angle 3.00/TCH 58).	10,000	BUZZR	tr 118°	ACINI	ELEV 2704	TDZE 2615
5000							



CATEGORY	A	B	C	D	E
LPV DA	2815/40		200	(200-¾)	
LNAV/VNAV DA	2892/45 277 (200-¾)	2903/45 288 (200-¾)	2911/45 296 (300-¾)	2922/45 307 (300-¾)	
LNAV MDA	3020/55	405 (400-1)	3020/60	405	(400-1¼)
C CIRCLING*	3200-1 496 (500-1)		3280-1½ 576 (600-1½)	3420-2¼ 716 (800-2¼)	3460-2¾ 756 (800-2¾)

REIL Rwy 12
HIRL all Rwys

TUCSON, ARIZONA
Amdt 1 20APR23

32°10'N - 110°53'W

DAVIS MONTHAN AFB (KDMA)

RNAV (GPS) RWY 12

SW-4, 18 MAY 2023 to 15 JUN 2023

SW-4, 18 MAY 2023 to 15 JUN 2023