

# TACAN Y RWY 12

TACAN DMA Chan <b>123</b>	APCH CRS <b>130°</b>	Rwy Idg <b>13,645</b> TDZE <b>2615</b> Arprt Elev <b>2704</b>
------------------------------	-------------------------	---

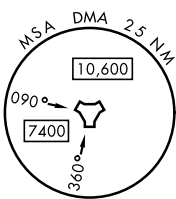
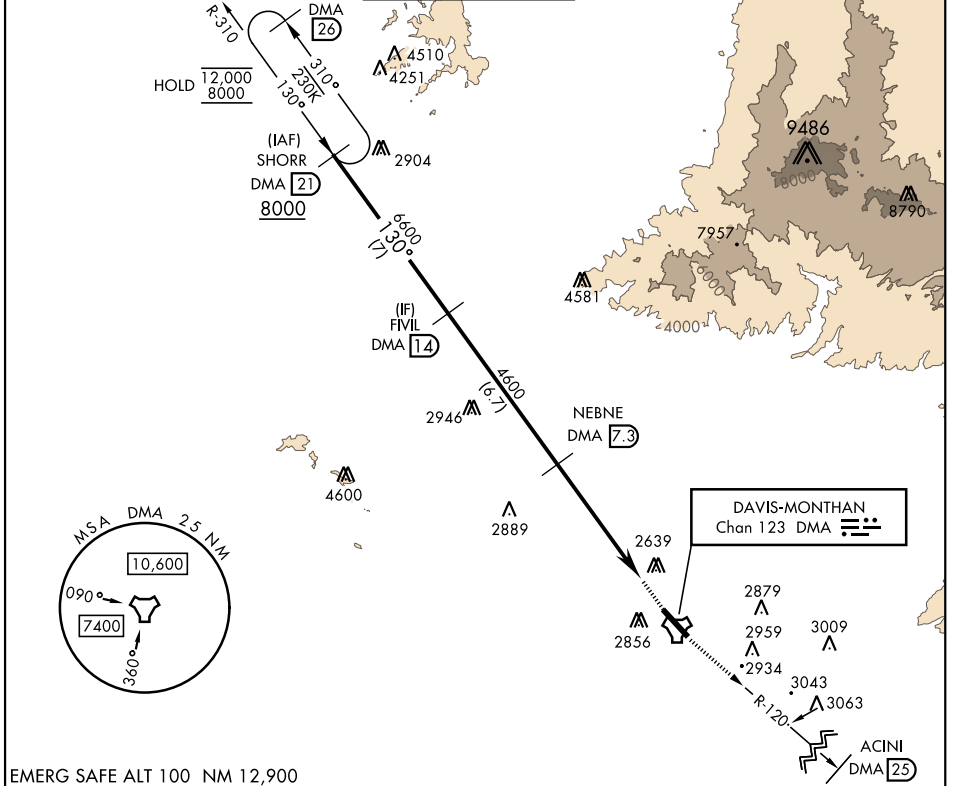
AL-429 [USAF]

DAVIS-MONTHAN AFB (KDMA)

RADAR required	MISSED APPROACH: Climbing to 8000 intercept DMA TACAN R-120 to ACINI. Expect RADAR vectors.
----------------	---

\* Circling not authorized S of Rwy 12-30.

ATIS ★ <b>270.1</b>	TUCSON APP CON 090°-285° <b>125.1 269.55</b> 286°-089° <b>119.4 318.1</b>	TOWER <b>118.85 253.5</b>	GND CON <b>121.8 275.8</b>	CLNC DEL <b>121.8 275.8</b>
------------------------	---	------------------------------	-------------------------------	--------------------------------



EMERG SAFE ALT 100 NM 12,900

SHORR DMA <b>21</b>	FIVIL DMA <b>14</b>	NEBNE DMA <b>7.3</b>	ESALE DMA <b>2.1</b>	ACINI DMA <b>25</b>	ELEV 2704	TDZE 2615		
8000	6600	4600	317°	0.6 NM	2711	2755		
TCH 58				5.2 NM	130°	0.8% UP		
CATEGORY				A	B	C	D	E
S-12	3160/55 545 (500-1)		3160-1½		545	(500-1½)		
CIRCLING*	3200-1 496 (500-1)		3280-1½ 576 (600-1½)		3420-2¼ 716 (800-2¼)	3460-2¾ 756 (800-2¾)		
TUCSON, ARIZONA				32°10'N-110°53'W		DAVIS-MONTHAN AFB (KDMA)		
Amdt 9 20APR23						TACAN Y RWY 12		

SW-4, 18 MAY 2023 to 15 JUN 2023

SW-4, 18 MAY 2023 to 15 JUN 2023