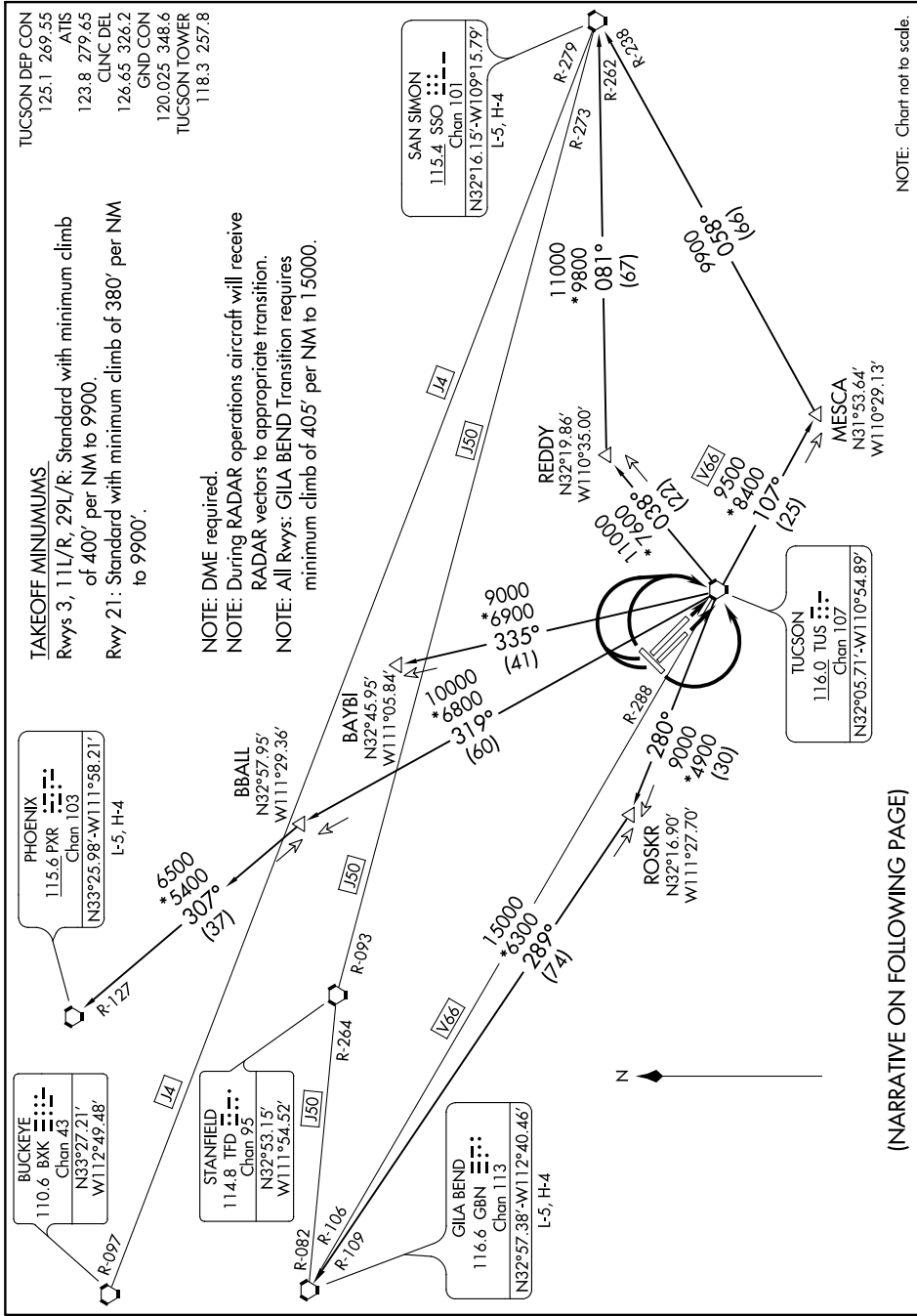


TUCSON EIGHT DEPARTURE

AL-430 (FAA)

TUCSON INTL (TUS)
TUCSON, ARIZONA

SW-4, 18 MAY 2023 to 15 JUN 2023



TUCSON DEP CON
125.1 269.55
ATIS
123.8 279.65
CLNC DEL
126.65 326.2
GND CON
120.025 348.6
TUCSON TOWER
118.3 257.8

TAKEOFF MINIMUMS.
Rwys 3, 11L/R, 29L/R: Standard with minimum climb of 400' per NM to 9900.
Rwy 21: Standard with minimum climb of 380' per NM to 9900'.

NOTE: DME required.
NOTE: During RADAR operations aircraft will receive RADAR vectors to appropriate transition.
NOTE: All Rwys: GILA BEND Transition requires minimum climb of 405' per NM to 15000.

NOTE: Chart not to scale.

(NARRATIVE ON FOLLOWING PAGE)

SW-4, 18 MAY 2023 to 15 JUN 2023

TUCSON EIGHT DEPARTURE

TUCSON, ARIZONA
TUCSON INTL (TUS)