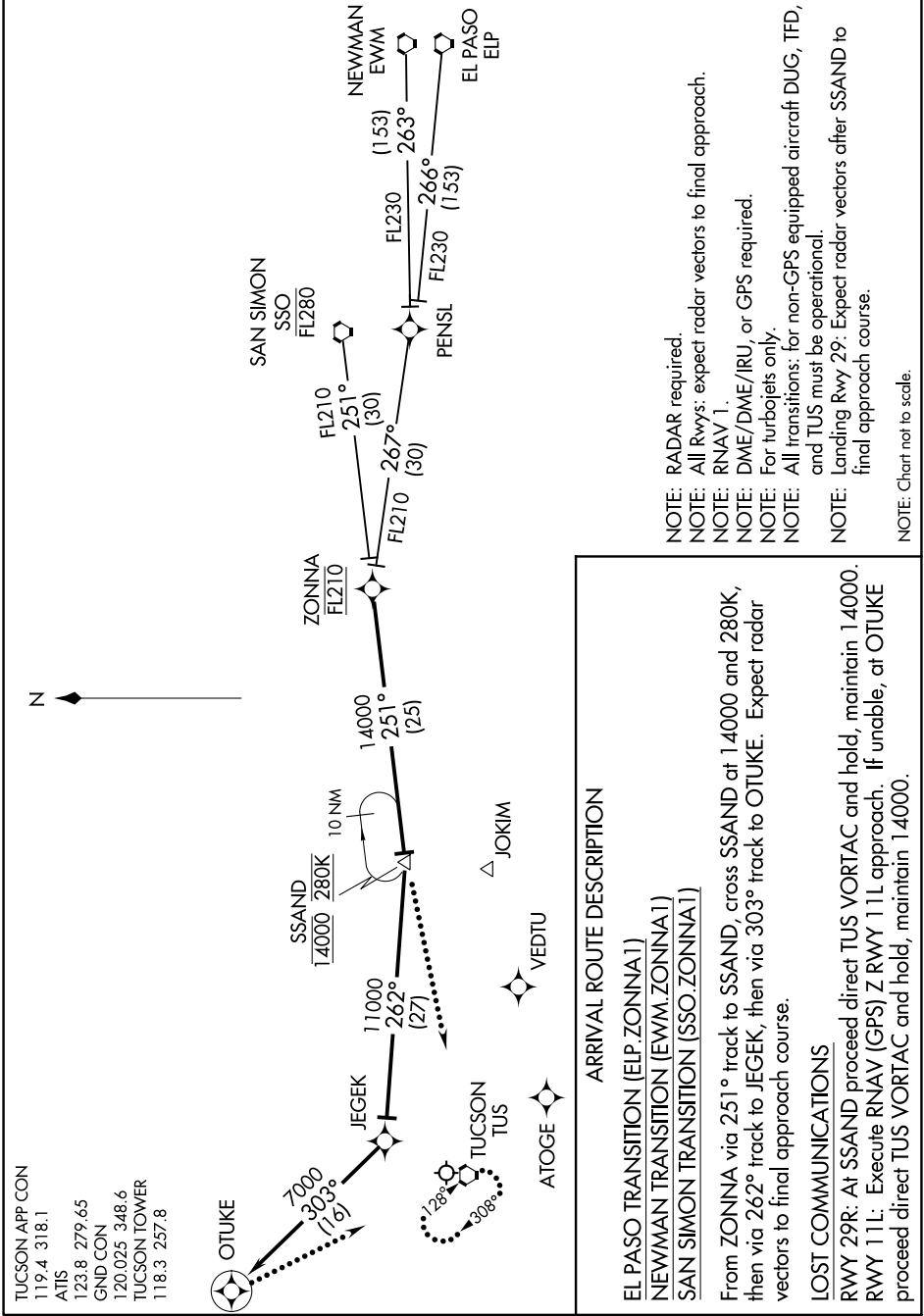


ZONNA ONE ARRIVAL (RNAV)

AL-430 (FAA)

TUCSON INTL (TUS)
TUCSON, ARIZONA

SW-4, 18 MAY 2023 to 15 JUN 2023



- NOTE: RADAR required.
- NOTE: All Rwys: expect radar vectors to final approach.
- NOTE: RNAV 1.
- NOTE: DME/DME/IRU, or GPS required.
- NOTE: For turbojets only.
- NOTE: All transitions: for non-GPS equipped aircraft DUG, TFD, and TUS must be operational.
- NOTE: Landing Rwy 29: Expect radar vectors after SSAND to final approach course.

ARRIVAL ROUTE DESCRIPTION

EL PASO TRANSITION (ELP.ZONNA1)
NEWMAN TRANSITION (EWM.ZONNA1)
SAN SIMON TRANSITION (SSO.ZONNA1)

From ZONNA via 251° track to SSAND, cross SSAND at 14000 and 280K, then via 262° track to JEGEK, then via 303° track to OTUKE. Expect radar vectors to final approach course.

LOST COMMUNICATIONS

RWY 29R: At SSAND proceed direct TUS VORTAC and hold, maintain 14000.
 RWY 11L: Execute RNAV (GPS) Z RWY 11L approach. If unable, at OTUKE proceed direct TUS VORTAC and hold, maintain 14000.

SW-4, 18 MAY 2023 to 15 JUN 2023

ZONNA ONE ARRIVAL (RNAV)

TUCSON, ARIZONA
TUCSON INTL (TUS)