

NE-3, 18 MAY 2023 to 15 JUN 2023

**TOP ALTITUDE:
5000**

D-ATIS 132.65
 CLINC DEL 128.25
 GPBLC
 GND CON 121.7 257.6
 WASHINGTON TOWER 119.1 257.6
 POTOMAC DEP CON 118.95 257.2

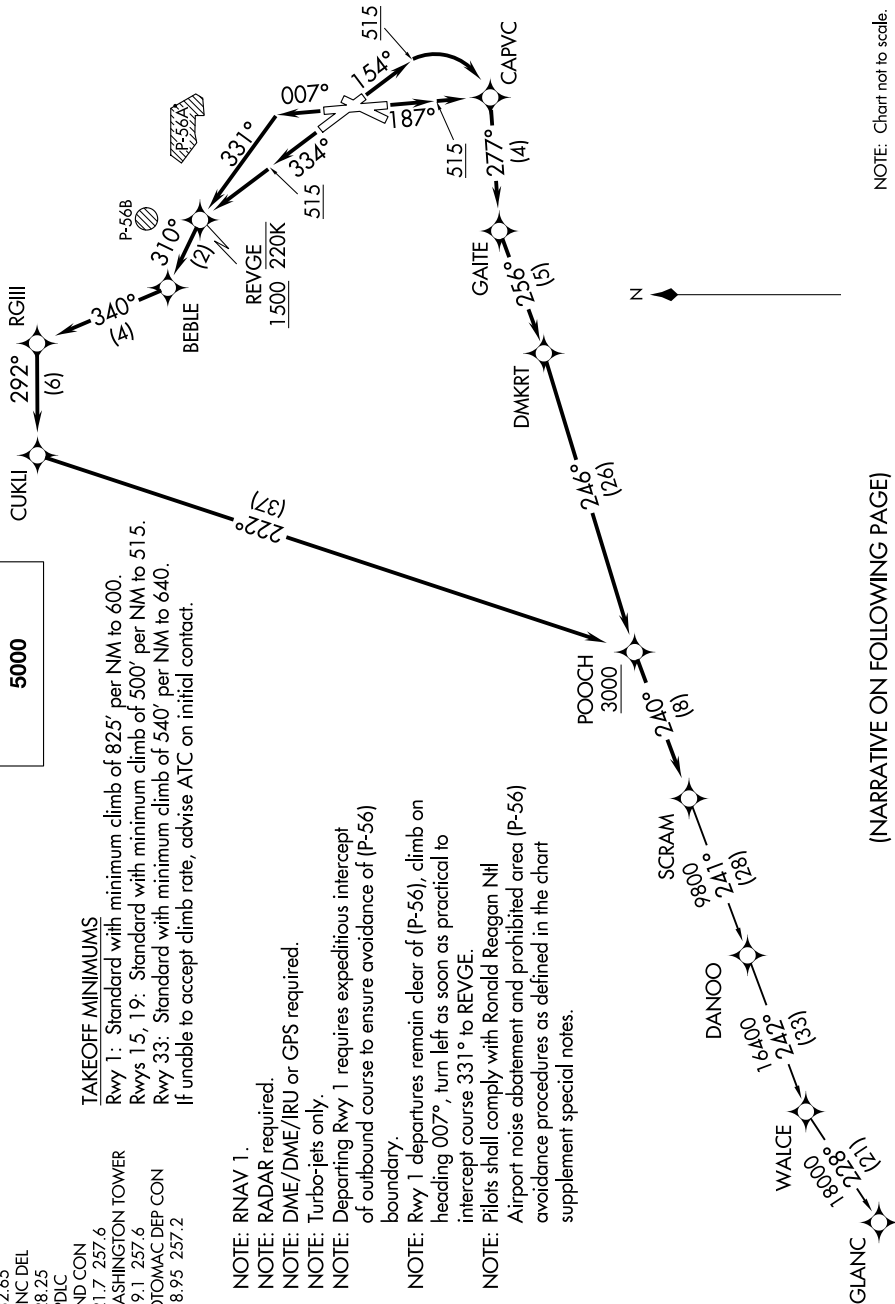
TAKEOFF MINIMUMS

Rwy 1: Standard with minimum climb of 825' per NM to 600.
 Rwys 15, 19: Standard with minimum climb of 500' per NM to 515.
 Rwy 33: Standard with minimum climb of 540' per NM to 640.
 If unable to accept climb rate, advise ATC on initial contact.

NOTE: RNAV 1.
 NOTE: RADAR required.
 NOTE: DME/DME/IRU or GPS required.
 NOTE: Turbo-jets only.
 NOTE: Departing Rwy 1 requires expeditious intercept of outbound course to ensure avoidance of (P-56) boundary.

NOTE: Rwy 1 departures remain clear of (P-56), climb on heading 007°, turn left as soon as practical to intercept course 331° to REVEGE.

NOTE: Pilots shall comply with Ronald Reagan Nil Airport noise abatement and prohibited area (P-56) avoidance procedures as defined in the chart supplement special notes.



NOTE: Chart not to scale.

(NARRATIVE ON FOLLOWING PAGE)

NE-3, 18 MAY 2023 to 15 JUN 2023