

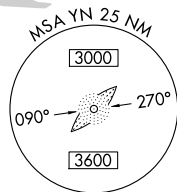
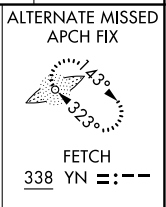
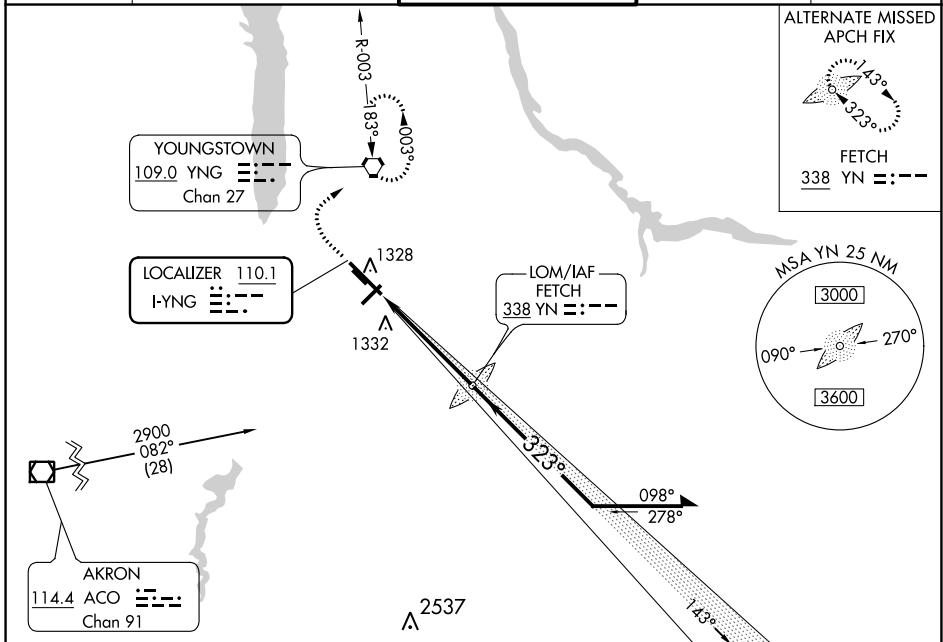
LOC I-YNG <b>110.1</b>	APP CRS <b>323°</b>	Rwy Idg TDZE <b>1186</b> Apt Elev <b>1192</b>
---------------------------	------------------------	---

# ILS or LOC RWY 32

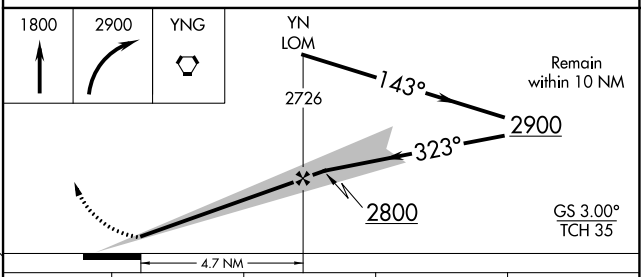
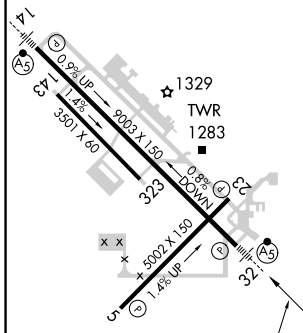
YOUNGSTOWN/WARREN RGNL (YNG)

ADF required.	MALSR	MISSED APPROACH: Climb to 1800 then climbing right turn to 2900 direct YNG VORTAC and hold, continue climb-in-hold to 2900.
ASR	AS	

ATIS <b>123.75</b>	YOUNGSTOWN APP CON * <b>133.95 322.3</b>	YOUNGSTOWN TOWER <b>119.5 263.0</b>	GND CON <b>121.9 275.8</b>	CLNC DEL <b>118.25</b>
-----------------------	---	--	-------------------------------	---------------------------



ELEV 1192	<b>D</b>	TDZE 1186
-----------	----------	-----------



HIRL Rwy 14-32  
MIRL Rwy 5-23  
REIL Rwys 5 and 23

FAF to MAP 4.7 NM

Knots	60	90	120	150	180
Min:Sec	4:42	3:08	2:21	1:53	1:34

CATEGORY	A	B	C	D
S-ILS 32*	1386/24		200 (200-½)	
S-LOC 32	1640/24	454 (500-½)	1640/45	454 (500-½)
<b>C</b> CIRCLING	1640-1 448 (500-1)	1660-1 468 (500-1)	1740-1½ 548 (600-1½)	1760-2 568 (600-2)

EC-2, 18 MAY 2023 to 15 JUN 2023

EC-2, 18 MAY 2023 to 15 JUN 2023