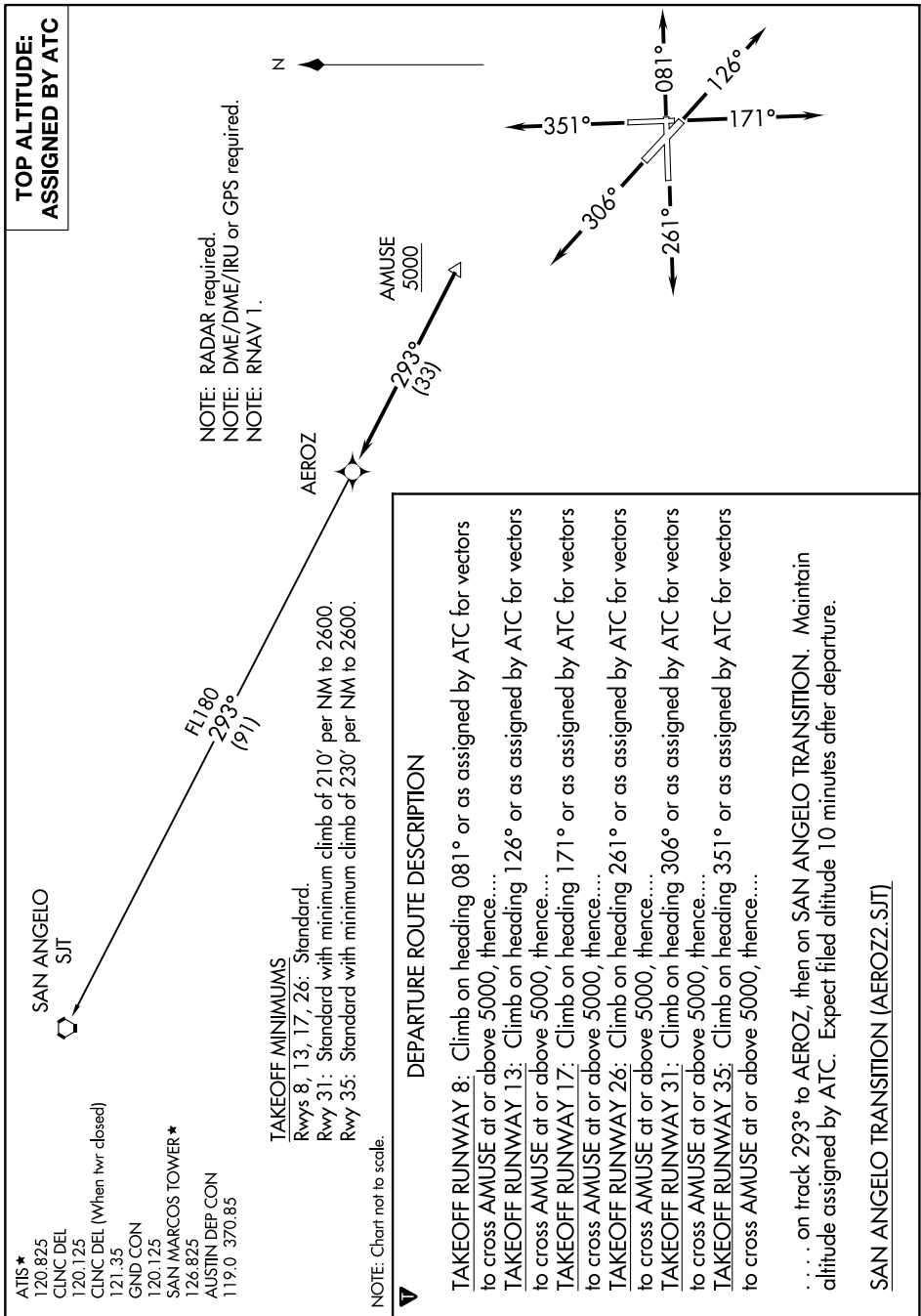


SC-3, 18 MAY 2023 to 15 JUN 2023



TOP ALTITUDE:
ASSIGNED BY ATC

NOTE: RADAR required.
NOTE: DME/DME/IRU or GPS required.
NOTE: RNAV 1.

TAKEOFF MINIMUMS

Rwys 8, 13, 17, 26: Standard.
Rwy 31: Standard with minimum climb of 210' per NM to 2600.
Rwy 35: Standard with minimum climb of 230' per NM to 2600.

NOTE: Chart not to scale.

DEPARTURE ROUTE DESCRIPTION

TAKEOFF RUNWAY 8: Climb on heading 081° or as assigned by ATC for vectors to cross AMUSE at or above 5000, thence....

TAKEOFF RUNWAY 13: Climb on heading 126° or as assigned by ATC for vectors to cross AMUSE at or above 5000, thence....

TAKEOFF RUNWAY 17: Climb on heading 171° or as assigned by ATC for vectors to cross AMUSE at or above 5000, thence....

TAKEOFF RUNWAY 26: Climb on heading 261° or as assigned by ATC for vectors to cross AMUSE at or above 5000, thence....

TAKEOFF RUNWAY 31: Climb on heading 306° or as assigned by ATC for vectors to cross AMUSE at or above 5000, thence....

TAKEOFF RUNWAY 35: Climb on heading 351° or as assigned by ATC for vectors to cross AMUSE at or above 5000, thence....

... on track 293° to AEROZ, then on SAN ANGELO TRANSITION. Maintain altitude assigned by ATC. Expect filed altitude 10 minutes after departure.

SAN ANGELO TRANSITION (AEROZ2-SJT)

SC-3, 18 MAY 2023 to 15 JUN 2023