

TYLER, TEXAS

AL-622 (FAA)

23110

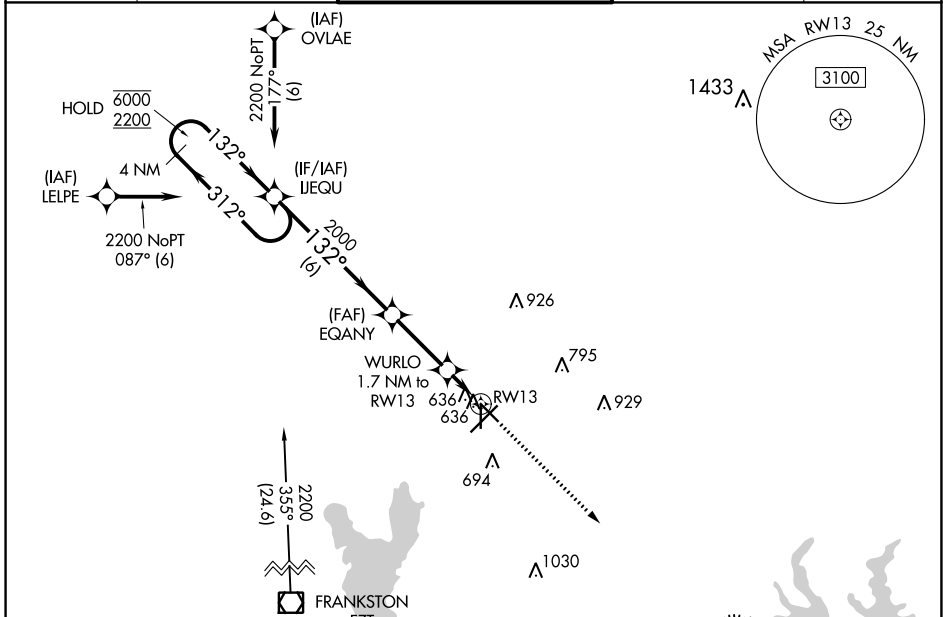
WAAS CH 45701 W13A	APP CRS 132°	Rwy ldg 5198 TDZE 539 Apt Elev 544
--	------------------------	---

RNAV (GPS) RWY 13

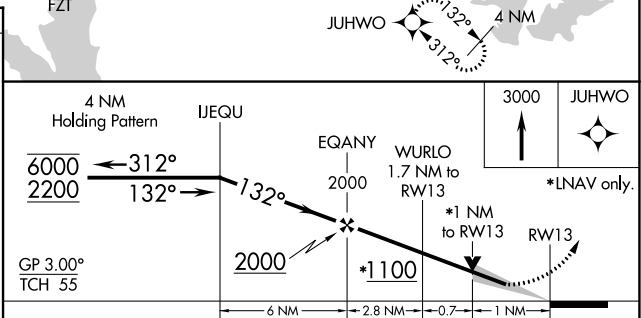
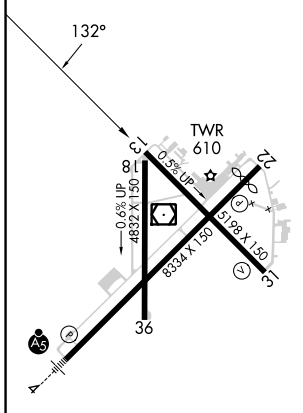
TYLER POUNDS RGNL (TYR)

RNP APCH.		MISSED APPROACH: Climb to 3000 direct JUHWO and hold.		
<p>▼ For uncompensated Baro-VNAV systems, LNAV/VNAV NA below -5°C or above 54°C.</p> <p>▲</p>				

ATIS 126.25	LONGVIEW APP CON* 128.75 379.15	POUNDS TOWER* 120.1(CTAF) 257.8	GND CON 121.9	UNICOM 122.95
-----------------------	---	---	-------------------------	-------------------------



ELEV 544	D	TDZE 539
-----------------	----------	-----------------



CATEGORY	A	B	C	D
LPV DA		739- ³ / ₄	200 (200- ³ / ₄)	
LNAV/VNAV DA		820- ⁷ / ₈	281 (300- ⁷ / ₈)	
LNAV MDA		900-1	361 (400-1)	
C CIRCLING	980-1 436 (500-1)	1020-1 476 (500-1)	1160-1 ³ / ₄ 616 (700-1 ³ / ₄)	1280-2 ¹ / ₄ 736 (800-2 ¹ / ₄)

REIL Rwy 22 **Ⓛ**
MIRL Rwy 18-36 **Ⓛ**
HIRL Rwy 4-22 and 13-31 **Ⓛ**

TYLER, TEXAS
Amdt 3A 08OCT20

32°21'N-95°24'W

TYLER POUNDS RGNL (TYR) RNAV (GPS) RWY 13

SC-2, 18 MAY 2023 to 15 JUN 2023

SC-2, 18 MAY 2023 to 15 JUN 2023