

TYLER, TEXAS

AL-622 (FAA)

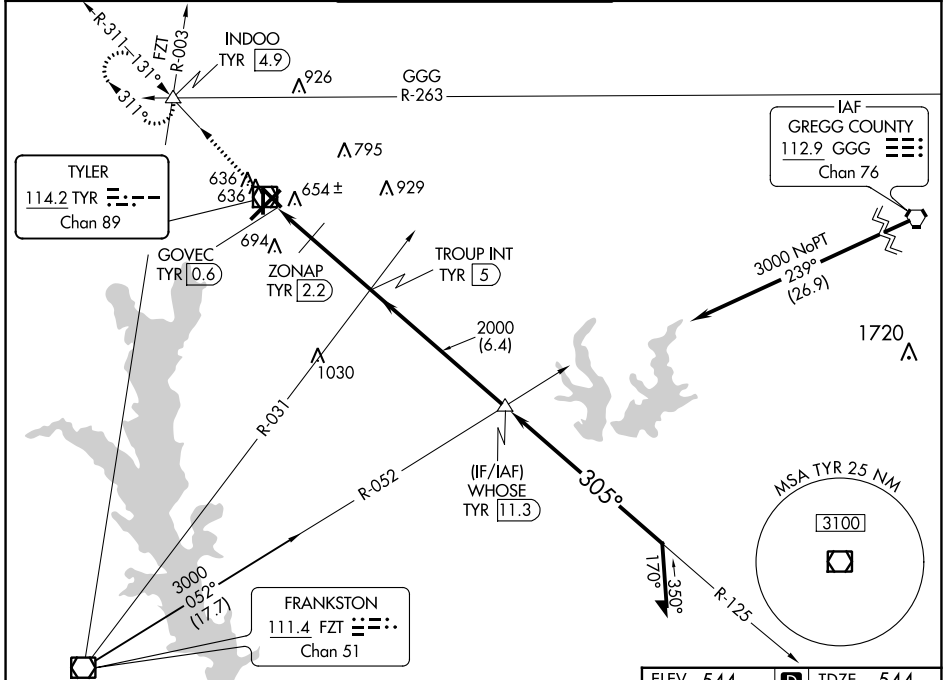
23110

VOR/DME TYR	APP CRS	Rwy Idg	5198
114.2	305°	TDZE	544
Chan 89		Apt Elev	544

# VOR RWY 31

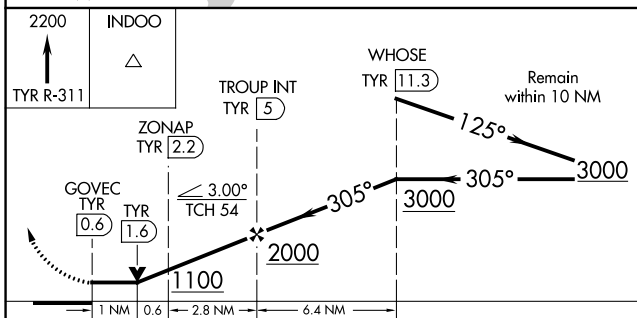
TYLER POUNDS RGNL (TYR)

<p><b>▼</b> Rwy 31 helicopter visibility reduction below 3/4 SM NA.</p>		<p>MISSED APPROACH: Climb to 2200 on TYR VOR/DME R-311 to INDOO INT/4.9 DME and hold.</p>		
ATIS	LONGVIEW APP CON*	POUNDS TOWER*	GND CON	UNICOM
126.25	128.75 379.15	120.1 (CTAF) 257.8	121.9	122.95



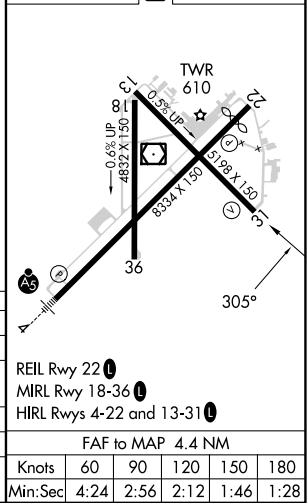
SC-2, 18 MAY 2023 to 15 JUN 2023

SC-2, 18 MAY 2023 to 15 JUN 2023



ELEV 544	<b>D</b> TDZE 544
----------	-------------------

CATEGORY	A	B	C	D
S-31	1100-1	556 (600-1)	1100-1½	556 (600-1½)
<b>C</b> CIRCLING	1100-1	556 (600-1)	1160-1¾ 616 (700-1¾)	1280-2¼ 736 (800-2¼)
ZONAP FIX MINIMUMS (DME REQUIRED)				
S-31	920-1 376 (400-1)			
<b>C</b> CIRCLING	980-1 436 (500-1)	1020-1 476 (500-1)	1160-1¾ 616 (700-1¾)	1280-2¼ 736 (800-2¼)



TYLER, TEXAS  
Amdt 3B 11AUG22

32°21'N-95°24'W

# TYLER POUNDS RGNL (TYR) VOR RWY 31